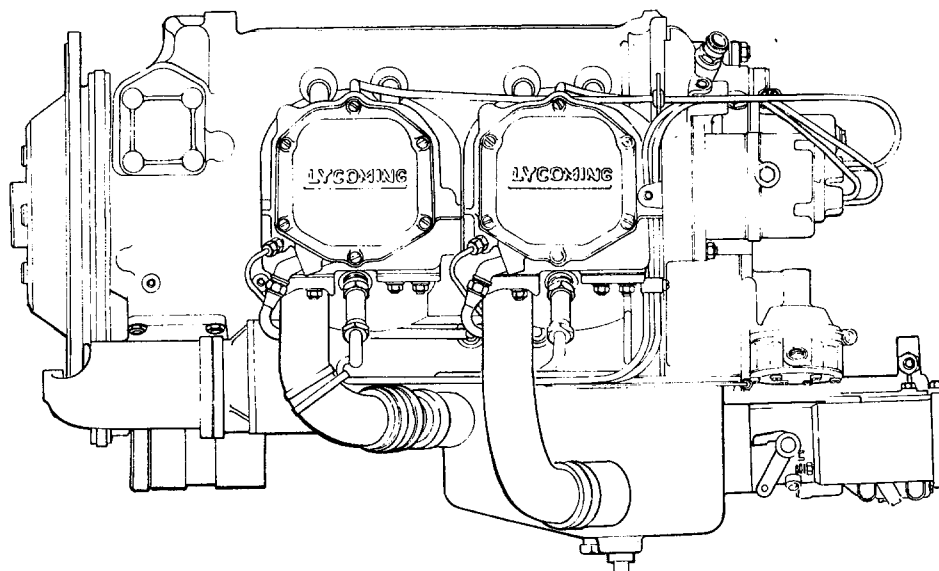


TEXTRON Lycoming AIRCRAFT ENGINES

O-360, LO-360-A1H6
Wide Cylinder Flange Crankcase Model

PARTS CATALOG

PC-306-5



NOVEMBER, 1989

TEXTRON Lycoming

Williamsport Plant
Textron Lycoming/Subsidiary of Textron Inc.

652 Oliver Street
Williamsport, PA 17701 U.S.A.
717/323-6181

Williamsport Plant

INTRODUCTION

This illustrated parts catalog contains a complete parts listing for the Textron Lycoming O-360, LO-360-A1H6 wide cylinder flange model aircraft engines.

Major assembly and sub-assembly parts of the engines are listed in the Group Assembly sections in the general sequence of engine build up.

A Service Kits section and Oversize and Undersize Parts List are included to aid in ordering parts as necessary during overhaul.

The Numerical Index is provided for convenience in finding parts when only the part number is known.

Parts coverage of Vendor Accessories used on Textron Lycoming engines may be found in the appropriate Vendor's Parts Catalog. A list of these publications appear in the latest edition of Service Letter No. L114.

NOTE

The illustrations, pictures and drawings shown in this publication are typical of the subject matter they portray.

This catalog, when used in conjunction with the appropriate overhaul manual, shall be used for parts identification only. Under no circumstances shall this catalog be used as an assembly or installation document.

Any reference in this document to a suppliers/parts manufacturers' product, by name, trademark, part number or other description is solely for the purposes of identification and does not indicate or infer that Textron Lycoming accepts responsibility for quality control and/or airworthiness of parts which do not pass through the Textron Lycoming quality control system.

SERVICE BULLETINS, INSTRUCTIONS AND LETTERS

Although the information contained in this parts catalog is up-to-date at time of publication, users are advised to procure current information through all Textron Lycoming distributors or from the factory by subscription. Consult the latest edition of Service Letter No. L114 for subscription information.

HOW TO ORDER PARTS

In ordering parts for your engine, observe the following instructions which will expedite shipment of correct parts required without delay.

- a. Always specify the model and serial number of your engine.
- b. Always specify Part Number, Nomenclature and quantity required.

TABLE OF CONTENTS

SECTION	PAGE
Introduction.....	i
Table of Contents.....	ii
Oversize and Undersize Parts Listing.....	iii
1. CRANKCASE, CRANKSHAFT AND CAMSHAFT GROUP	
Crankcase Assembly.....	1-1
Oil Level Gage Assembly.....	1-3
Camshaft Assembly.....	1-4
Crankcase Related Parts.....	1-5
Crankshaft Assembly and Related Parts.....	1-7
Propeller Governor Drive.....	1-9
Crankshaft Idler Gears.....	1-10
Crankcase Attaching Parts.....	1-11
2. ACCESSORY HOUSING AND RELATED PARTS	
Accessory Housing Assembly.....	2-1
Oil Pump and Accessory Housing Attaching Parts.....	2-3
Fuel Pump and Governor Drive Adapter Pad Cover.....	2-5
Vacuum Pump Drive and Cover.....	2-6
Oil Filter and Oil Cooler Bypass Valve.....	2-7
3. CYLINDER, PISTON AND VALVE TRAIN	
Connecting Rods, Pistons and Ring Assemblies.....	3-1
Cylinder Assembly.....	3-2
Cylinder Related Parts.....	3-3
Valve Assembly.....	3-5
Cylinder Head Drain Tubes and Intercylinder Cooling Baffles.....	3-7
4. IGNITION SYSTEM	
Magnetos, Magneto Drives and Spark Plugs.....	4-1
Bag - Magneto Harness Attaching.....	4-3
5. ELECTRICAL COMPONENTS	
Alternator Assembly and Belt.....	5-1
Starter Motor and Attaching Parts.....	5-2
Alternator Mounting and Attaching Parts.....	5-3
6. OIL SUMP AND INDUCTION SYSTEM	
Oil Sump Assembly and Oil Suction Screen.....	6-1
Intake Pipes and Attaching Parts.....	6-3
Carburetor Assembly.....	6-4
Priming System.....	6-5
7. SERVICE KIT SECTION.....	7-1
8. NUMERICAL INDEX.....	8-1

Williamsport Plant

Oversize and Undersize Parts Listing

PART NO.	DESCRIPTION	OVERSIZE								UNDERSIZE		
		P02 .002	P05 .005	P10 .010	P15 .015	P20 .020	P30 .030	P40 .040	P50 .050	M03 .003	M06 .006	M10 .010
66610	BUSHING		X	X								
66796	INSERT			X								
69796	DOWEL		X									
71903-A, -B	BUSHING	SEE LATEST EDITION OF SERVICE INSTRUCTION NO. 1143 FOR APPLICATION.										
72057	SEAT			X		X	X					
72058	SEAT			X		X	X					
72060-S	BUSHING		X	X	X	X						
72061-S	BUSHING		X	X	X	X						
72062-S	BUSHING		X	X	X	X						
73810	BUSHING	SEE LATEST EDITION OF SERVICE INSTRUCTION NO. 1142 FOR APPLICATION.										
73857	RING			X		X						
74241	RING			X								
76943-S	GUIDE	SEE LATEST EDITION OF SERVICE INSTRUCTION NO. 1256 FOR APPLICATION.										
77160-S	GUIDE	SEE LATEST EDITION OF SERVICE INSTRUCTION NO. 1256 FOR APPLICATION.										
LW-11997	SEAL	SEE LATEST EDITION OF SERVICE INSTRUCTION NO. 1324 FOR APPLICATION.										
LW-13521	BEARING			X						X*	X*	X*
LW-13522	BEARING									X	X	X
LW-13792	SEAL	SEE LATEST EDITION OF SERVICE INSTRUCTION NO. 1324 FOR APPLICATION.										
LW-13884	BEARING				X					X	X	X
LW-16048	BEARING			X						X*	X*	X*
LW-16711	BEARING									X	X	X
STD-1065	DOWEL	X	X	X	X							
18A19441	BEARING				X					X	X	X

Studs available in P03, P07 and P12.

* Also available in P10 oversize.

NOTE

When ordering oversize and undersize parts, be sure to specify the required oversize and undersize dimension along with the proper part number. For example, to order bearing LW-13884 in .003 undersize, order part number LW-13884-M3. Oversize code letter is "P" while undersize code letter is "M". These letters are then followed by the number designating the size in thousandths of an inch.

SECTION

1

**CRANKCASE,
CRANKSHAFT AND
CAMSHAFT GROUP**

Williamsport Plant

CRANKCASE, CRANKSHAFT AND CAMSHAFT GROUP
CRANKCASE ASSEMBLY

FIG. REF. 1	PART NUMBER	DESCRIPTION	QUANTITY PER ASSEMBLY
1	LW-18386-1*	CRANKCASE ASSEMBLY (See note)	1
	LW-18414-1**	CRANKCASE ASSEMBLY (See note)	1
2	75154	STUD, 1/2-13 x 10-1/32 long	2
3	50-15	STUD, 1/2-20 x 1-7/8 long	8
4	38-13	STUD, 3/8-16 x 1-5/8 long	16
5	38D-17	STUD, 3/8-16 x 2-1/8 long, drilled	1
6	LW-13793	STUD, 5/16-18 x 15/16 long, drilled	1
7	31C-12	STUD, 5/16-18 x 1-1/2 long	2
8	31C-13	STUD, 5/16-18 x 1-5/8 long	1
9	38-22	STUD, 3/8-16 x 2-3/4 long	1
10	STD-557	DOWEL, 1/2 dia. x 19/32 long, hollow	2
11	72158	BUSHING, Governor drive idler shaft	1
12	STD-514	DOWEL, 5/16 dia. x 1/2 long	2
13	69796	DOWEL, Crankshaft bearing	2
14	1102	PLUG, 1/8-27 NPT, Allen head	4
15	STD-1623	INSERT, 1/4-20 Heli-Coil x 3/8	2
16	65007	RETAINER, Shroud tube seal	8
17	STD-1339	PLUG, 1/16-27 NPT, Allen head	1
18	31C-16	STUD, 5/16-18 x 2.00 long (driven height, 1.35-1.40)	4
19	1102	PLUG, 1/8-27 NPT, Allen head	1

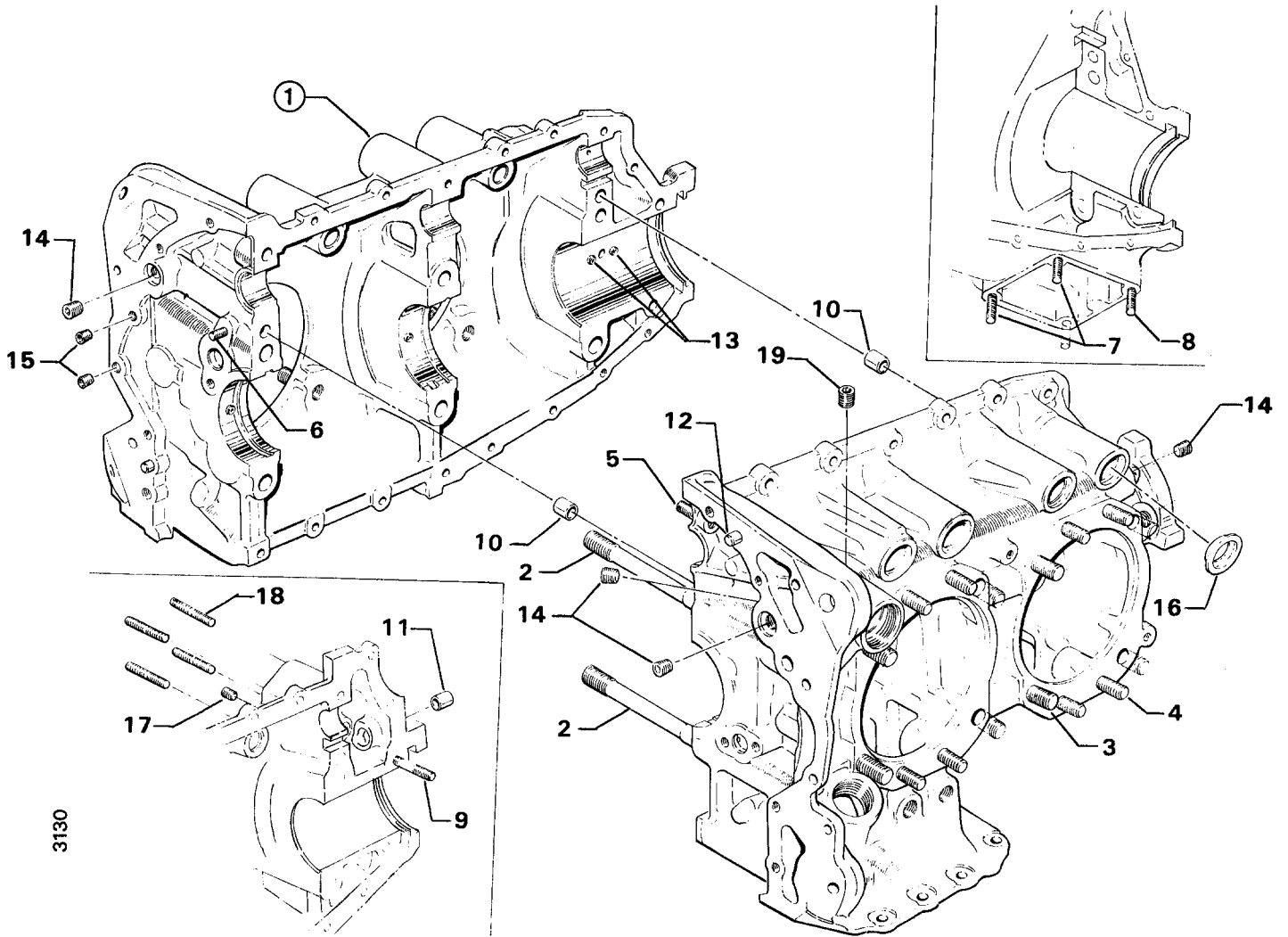
* Used on O-360-A1H6 engines.

** Used on LO-360-A1H6 engines.

NOTE

This part not available as a service item. Refer to Service Kit Section 8 for applicable Crankcase Assy. and thru stud kit part number.

Williamsport Plant



3130

Figure 1. CRANKCASE ASSEMBLY

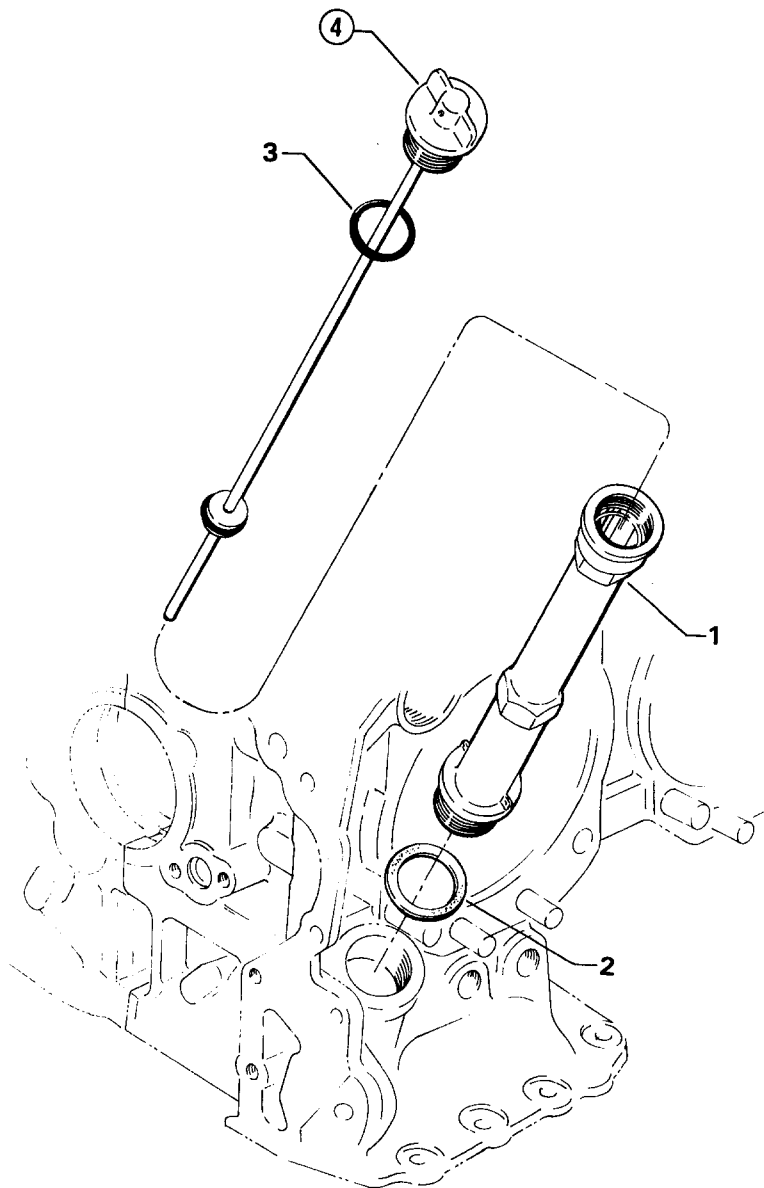
Williamsport Plant

CRANKCASE, CRANKSHAFT AND CAMSHAFT GROUP
OIL LEVEL GAGE ASSEMBLY

FIG. REF. 2	PART NUMBER	DESCRIPTION	QUANTITY PER ASSEMBLY
1	75736	TUBE, Oil level gage, long	1
2	72059	GASKET, Oil level gage	1
3	74068	RING, Oil level gage seal	1
4	LW-16783-15 *	GAGE ASSEMBLY, Oil level	1
	LW-16783-16 **	GAGE ASSEMBLY, Oil level	1

* Used on O-360-A1H6 engines.

** Used on LO-360-A1H6 engines.



3131

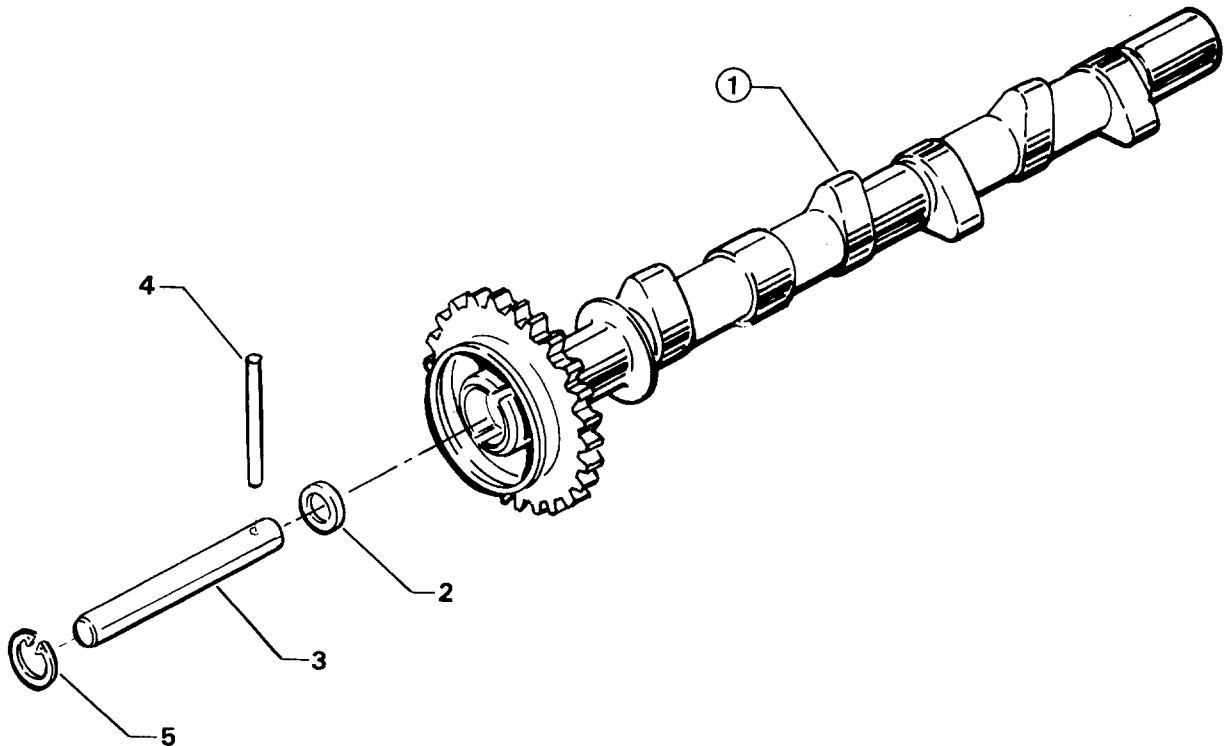
Figure 2. OIL LEVEL GAGE ASSEMBLY

Williamsport Plant

CRANKCASE, CRANKSHAFT AND CAMSHAFT GROUP
CAMSHAFT ASSEMBLY

FIG. REF. 3	PART NUMBER	DESCRIPTION	QUANTITY PER ASSEMBLY
1	LW-18843 *	CAMSHAFT ASSEMBLY	1
	LW-18845 **	CAMSHAFT ASSEMBLY	1
2	76118	SPACER, Tachometer shaft centering	1
3	76121	SHAFT ASSEMBLY, Tachometer	1
4	LW-18667	PIN, 3/16 dia. x 2-21/64 long	1
5	MS16625-1081	RING, Internal retaining	1

- * Used on O-360-A1H6 engines.
- ** Used on LO-360-A1H6 engines.



2669

Figure 3. CAMSHAFT ASSEMBLY

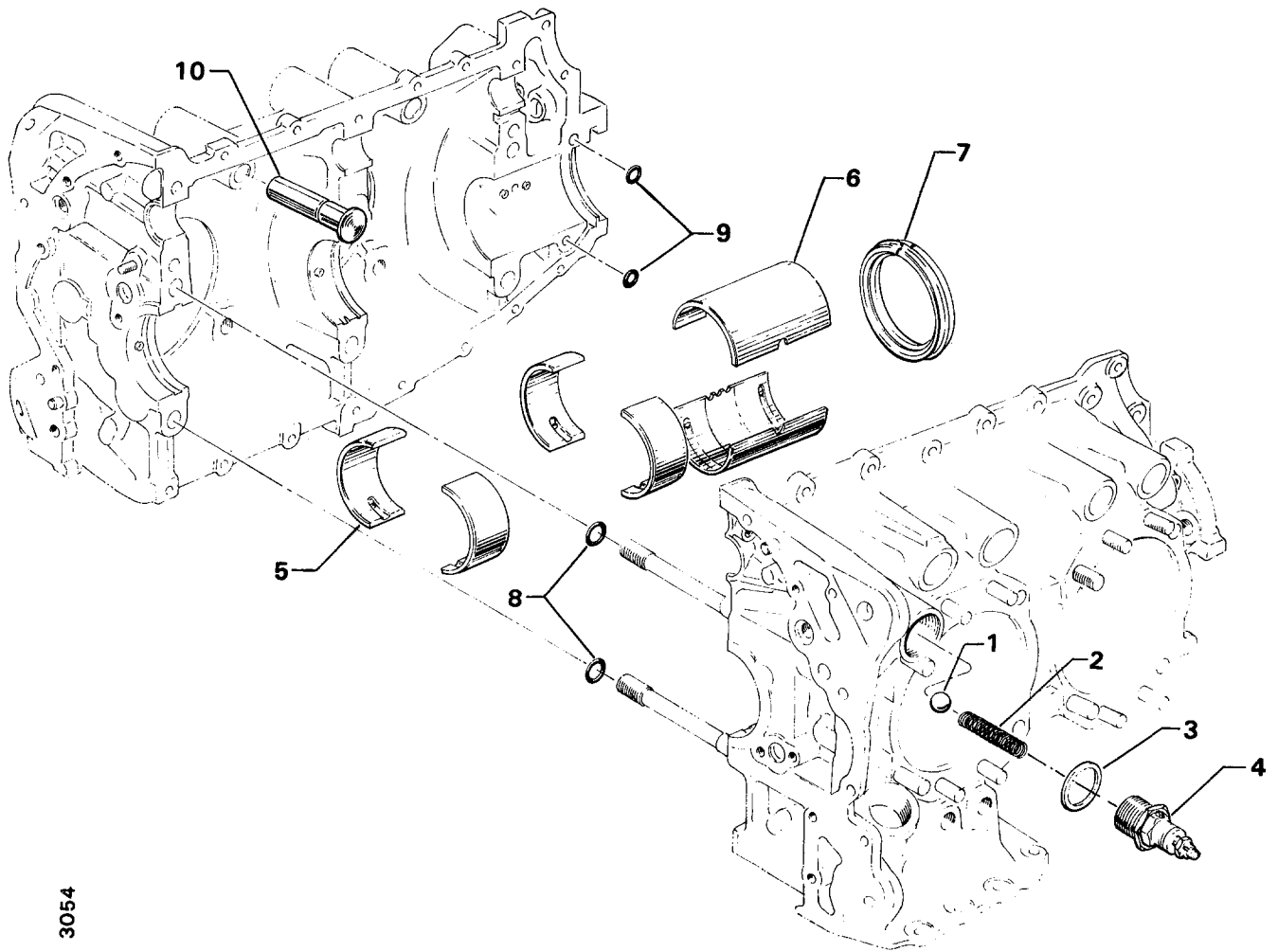
Williamsport Plant

CRANKCASE, CRANKSHAFT AND CAMSHAFT GROUP
CRANKCASE RELATED PARTS

FIG. REF. 4	PART NUMBER	DESCRIPTION	QUANTITY PER ASSEMBLY
1	1028-B	BALL, 11/16 diameter	1
2	LW-11713 *	SPRING, Oil pressure relief valve	1
	68668 *	SPRING, Oil pressure relief valve	1
	77467 *	SPRING, Oil pressure relief valve	1
	61084 *	SPRING, Oil pressure relief valve	1
	LW-18085 *	SPRING, Oil pressure relief valve	1
3	06E19769-1.25	GASKET, 1-1/4 I.D. x 1-1/2 O.D. x 3/32 annular	1
4	77808	VALVE ASSY., Oil pressure relief, adjustable	1
5	LW-16711	BEARING, Crankshaft	4
6	LW-13884	BEARING, Crankshaft, front	2
	18A19441	BEARING, Crankshaft, front (alternate)	2
7	LW-13792 * *	SEAL, Crankshaft oil, solid	1
	LW-11997 * *	SEAL, Crankshaft oil, split	1
8	72075	SEAL, Oil, 3/32 section x 15/32 I.D.	2
9	72091	RING, Oil seal, 23/64 I.D. x 3/32 dia. section	2
10	72877	BODY, Hydraulic tappet	8

* Select spring to give a minimum of three threads exposed on adjusting screw to allow field adjustment. Reference latest revision of SSP-1776, Part 1 for spring identification.

* * Refer to latest edition of Service Instruction No. 1324 for application.



3054

Figure 4. CRANKCASE RELATED PARTS

Williamsport Plant

CRANKCASE, CRANKSHAFT AND CAMSHAFT GROUP
CRANKSHAFT ASSEMBLY AND RELATED PARTS

FIG. REF. 5	PART NUMBER	DESCRIPTION	QUANTITY PER ASSEMBLY
1	LW-17281 *	CRANKSHAFT AND COUNTERWEIGHT ASSEMBLY	1
	LW-17291 * *	CRANKSHAFT AND COUNTERWEIGHT ASSEMBLY	1
2	LW-17254 *	CRANKSHAFT AND PLUG ASSEMBLY	1
	LW-17264 * *	CRANKSHAFT AND PLUG ASSEMBLY	1
3	STD-1211	PLUG, 2.00 dia. expansion	1
4	STD-1065	DOWEL, Stepped, 5/16 & 1/4 dia. x 35/64 long	1
5	61510	PLUG, 1-3/4 O.D.	1
6	72060	BUSHING, Propeller flange, indexing	1
7	72061	BUSHING, Propeller flange, short	1
8	72062	BUSHING, Propeller flange, long	4
9	73810 ★	BUSHING, Crankshaft dynamic counterweight	4
10	LW-19227 •	COUNTERWEIGHT ASSEMBLY	2
11	71903 ‡	BUSHING, Dynamic counterweight	8
12	LW-10977 •	ROLLER, Dynamic counterweight, 8th order	2
13	72797 •	ROLLER, Dynamic counterweight, 6.3 order	2
14	LW-14820	RING, Internal retaining	8
15	71907	WASHER, Dynamic counterweight	8
16	13S19646 ■	GEAR, Crankshaft	1
17	LW-18639	LOCKPLATE, Crankshaft gear	1
18	STD-2213	SCREW, 5/16-24 x 1.00 long	1
19	74977 *	SUPPORT ASSEMBLY, Starter ring gear	1
	LW-18506 * *	SUPPORT ASSEMBLY, Starter ring gear	1
20	72566 *	GEAR, Starter ring	1
	LW-10551 * *	GEAR, Starter ring	1

* Used on O-360-A1H6 engines.

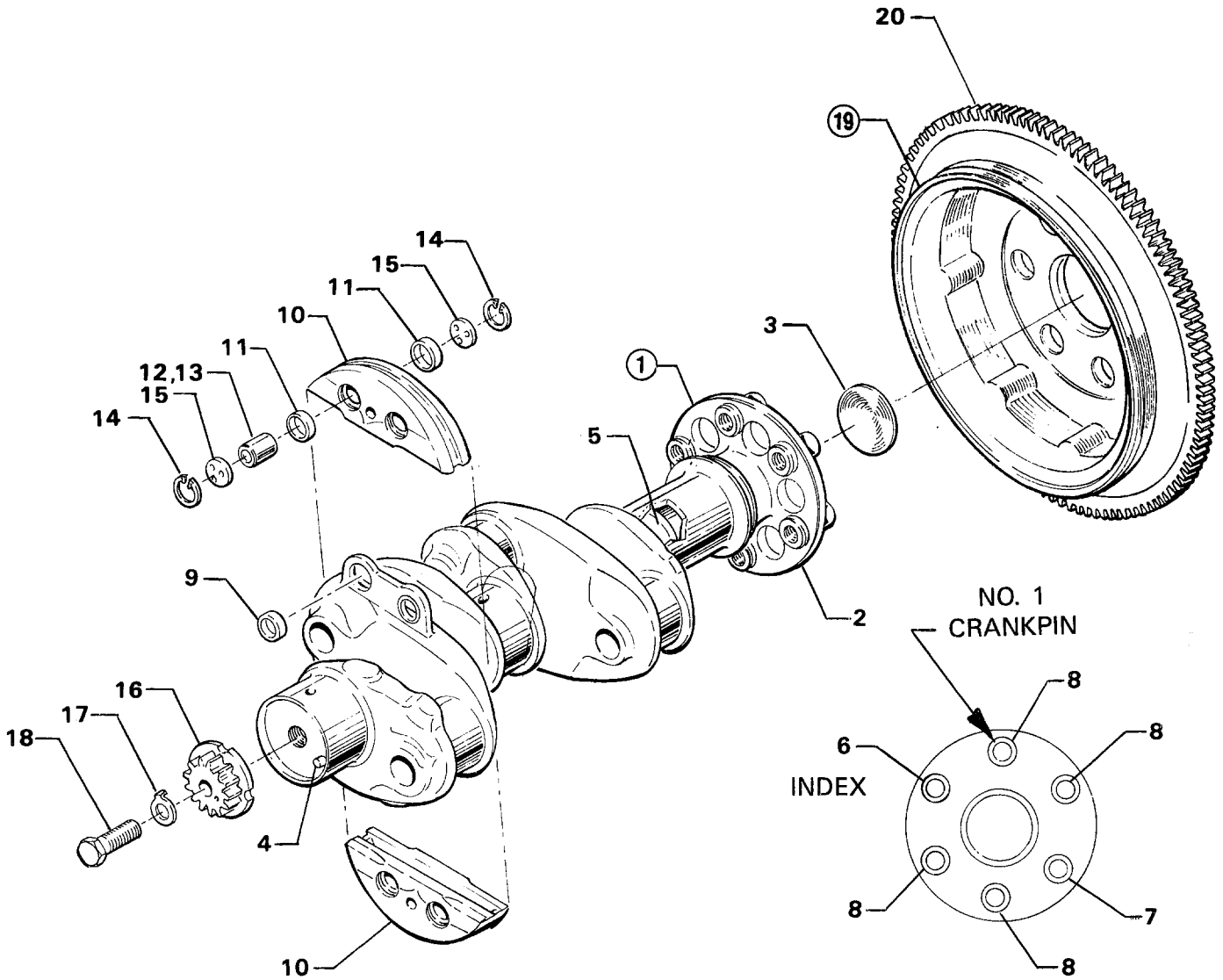
* * Used on LO-360-A1H6 engines.

★ See latest edition of Service Instruction No. 1142 for application.

• See latest edition of Service Instruction No. 1012 for application.

‡ See latest edition of Service Instruction No. 1143 for application.

■ See latest edition of Service Bulletin No. 475 for application.



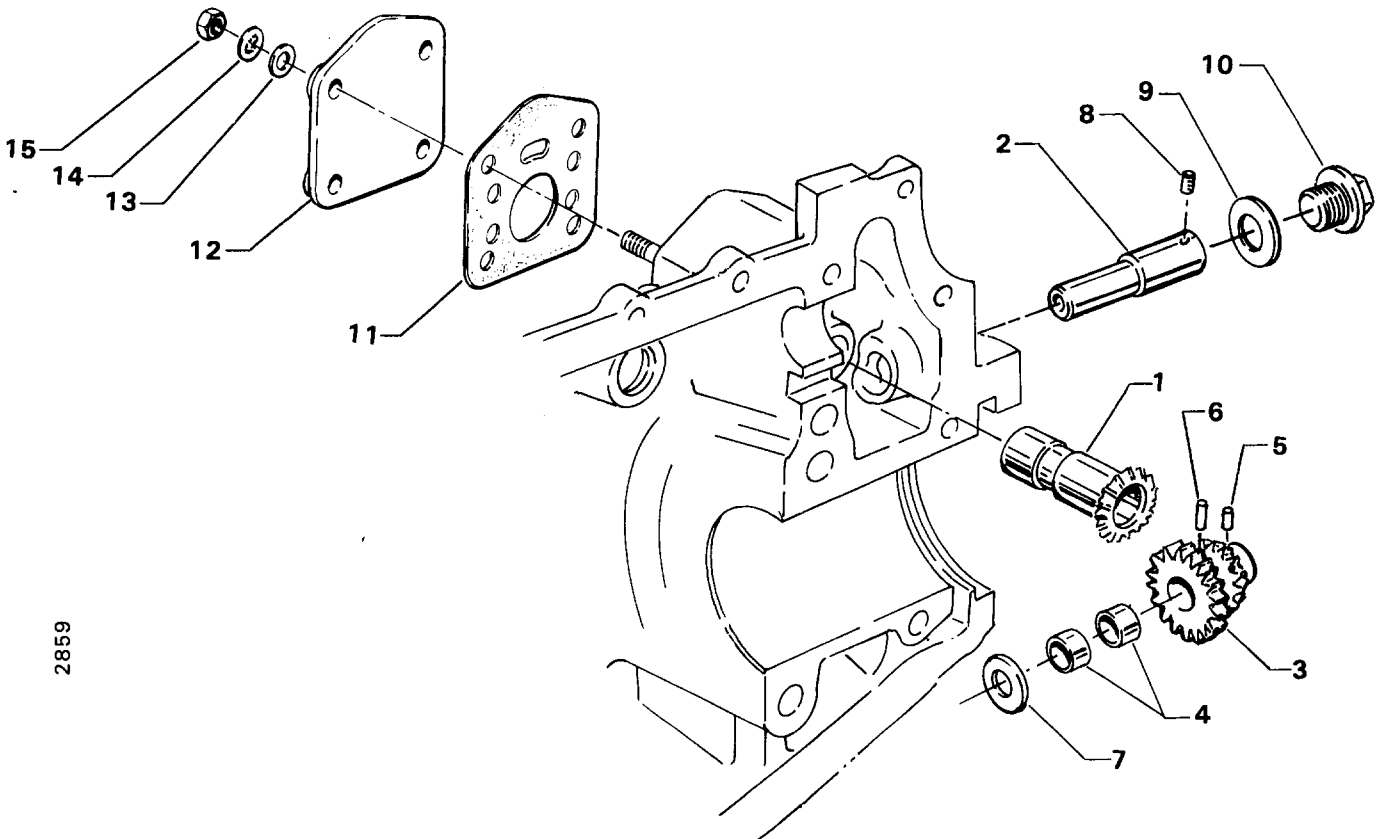
3272

Figure 5. CRANKSHAFT ASSEMBLY AND RELATED PARTS

Williamsport Plant

CRANKCASE, CRANKSHAFT AND CAMSHAFT GROUP
PROPELLER GOVERNOR DRIVE

FIG. REF. 6	PART NUMBER	DESCRIPTION	QUANTITY PER ASSEMBLY
1	77875	GEAR, Propeller governor driven	1
2	LW-14021	SHAFT, Propeller governor idler gear	1
3	77874	GEAR ASSY., Propeller governor idler	1
4	77872	BUSHING, Propeller governor idler gear	2
5	STD-19	DOWEL, 3/32 dia. x 7/32 long	1
6	STD-798	DOWEL, 3/32 dia. x 9/32 long	1
7	73249	WASHER, Thrust	AR
	73250	WASHER, Thrust	AR
	73251	WASHER, Thrust	AR
	73252	WASHER, Thrust	AR
8	AN565B1032H5	SET SCREW, No. 10-32 x 5/16 long	1
9	70455	GASKET, 25/32 I.D. x 1-1/8 O.D. x 1/16 thick	1
10	LW-13896	PLUG, 3/4-16 hex. head	1
11	72053	GASKET, Governor	1
12	72378	COVER, Governor drive	1
13	STD-35	WASHER, 5/16 plain	4
14	STD-475	WASHER, 5/16 lock, internal teeth	4
15	STD-1410	NUT, 5/16-18 plain	4



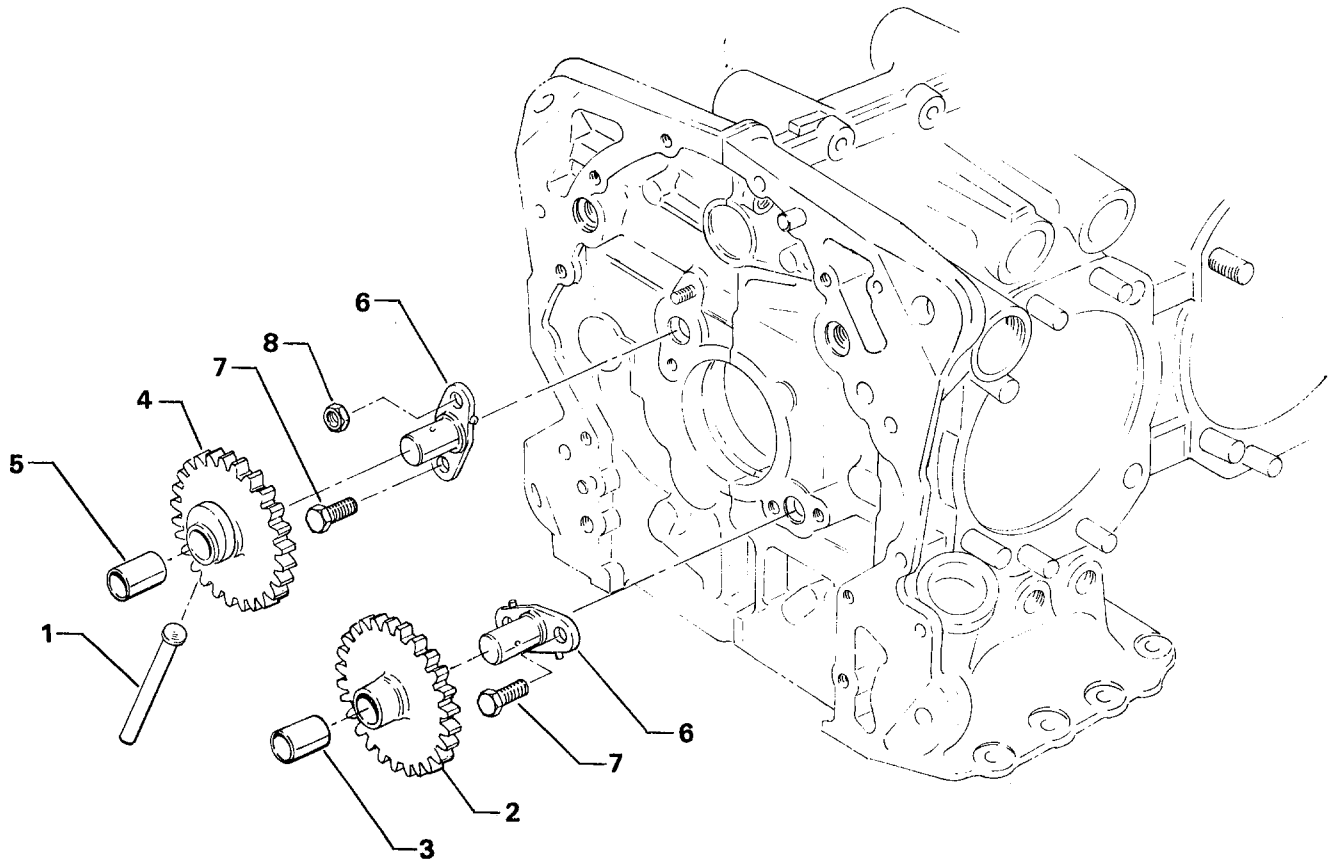
2859

Figure 6. PROPELLER GOVERNOR DRIVE

Williamsport Plant

CRANKCASE, CRANKSHAFT AND CAMSHAFT GROUP
CRANKSHAFT IDLER GEARS

FIG. REF. 7	PART NUMBER	DESCRIPTION	QUANTITY PER ASSEMBLY
1	61544	PLUNGER, Fuel pump, long	1
2	74996	GEAR ASSY., Crankshaft idler, plain	1
3	77309	BUSHING, Crankshaft idler gear	1
4	75072	GEAR ASSY., Crankshaft idler	1
5	77309	BUSHING, Crankshaft idler gear	1
6	LW-13796	SHAFT, Crankshaft idler gear	2
7	STD-2167	SCREW, 5/16-18 x 7/8 long, hex. hd. dr.	3
8	STD-2168	NUT, 5/16-18 NC-3 slotted shear	1



3264

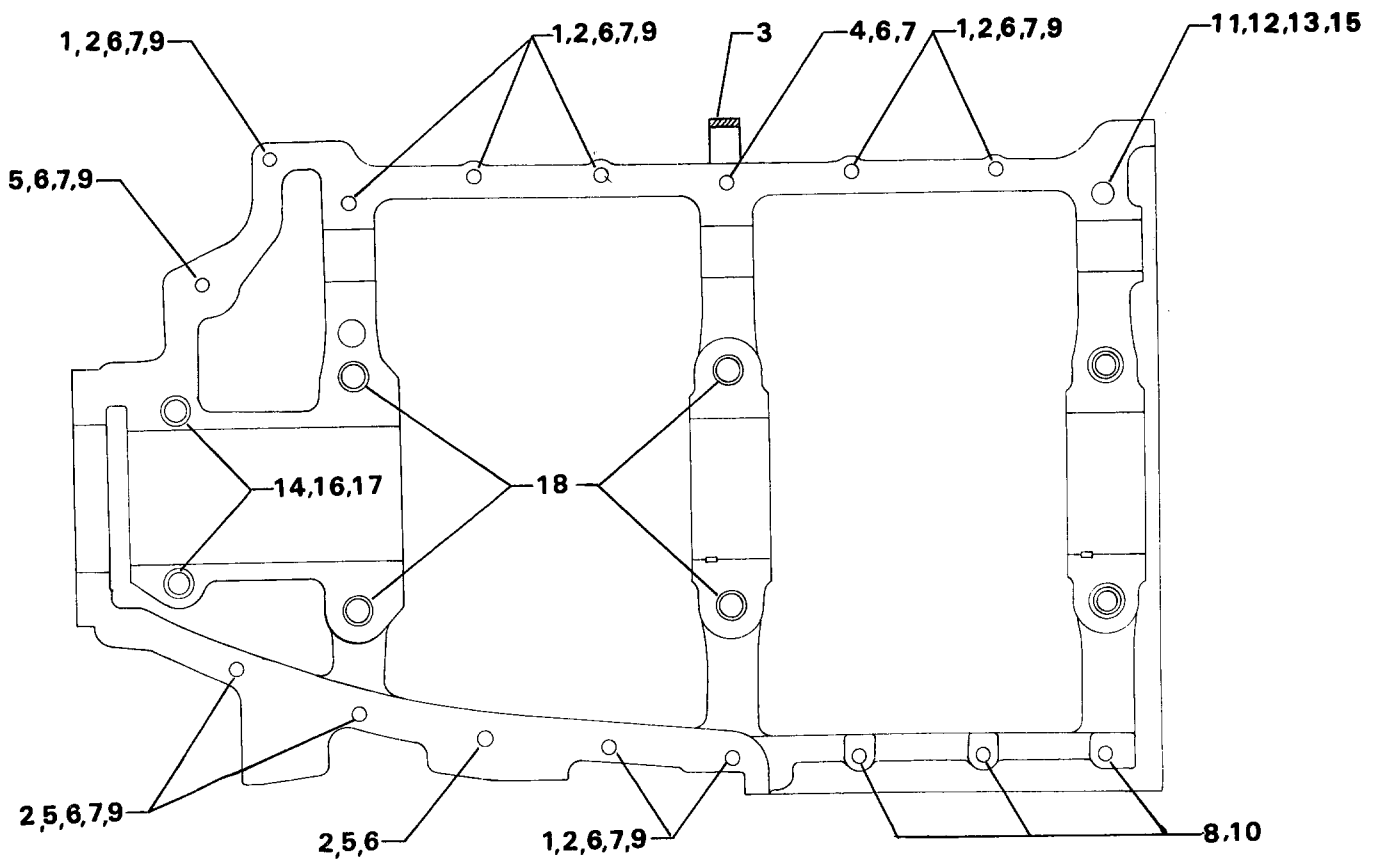
Figure 7. CRANKSHAFT IDLER GEARS

Williamsport Plant

CRANKCASE, CRANKSHAFT AND CAMSHAFT GROUP
CRANKCASE ATTACHING PARTS

FIG. REF. 8	PART NUMBER	DESCRIPTION	QUANTITY PER ASSEMBLY
1	LW-25-1.50	BOLT, 1/4-20 x 1-1/2 long, hex. head	8
2	STD-8	WASHER, 1/4 plain	20
3	60803	STRAP, Lifting	1
4	LW-25-1.75	BOLT, 1/4-20 x 1-3/4 long, hex. head	1
5	LW-25-1.13	BOLT, 1/4-20 x 1-1/8 long, hex. head	4
6	STD-160	WASHER, 1/4 lock, internal teeth	12
7	STD-1411	NUT, 1/4-20 plain	9
8	LW-25S1.50	BOLT, 1/4-20 x 1-1/2 long, hex. hd. dr. end	3
9	STD-8	WASHER, 1/4 plain (max. 9)	AR
10	STD-1409	NUT, 1/4-20 slotted shear	3
11	STD-33	WASHER, 3/8 plain, 1/16 thick (max. 3)	AR
12	AN960-616L	WASHER, 3/8 plain, 1/32 thick (max. 3)	AR
13	STD-872	NUT, 3/8-24 slotted	1
14	AN6-34A	BOLT, 3/8-24 x 3-37/64 long, hex. head	1
15	STD-33	WASHER, 3/8 plain	2
16	STD-678	WASHER, 3/8 lock, internal teeth	2
17	STD-596	NUT, 3/8-24 plain	2
18	76220	STUD, 1/2-20 x 10-11/16 long	4

Williamsport Plant



3139

Figure 8. CRANKCASE ATTACHING PARTS

SECTION

2

**ACCESSORY
HOUSING AND
RELATED PARTS**

Williamsport Plant

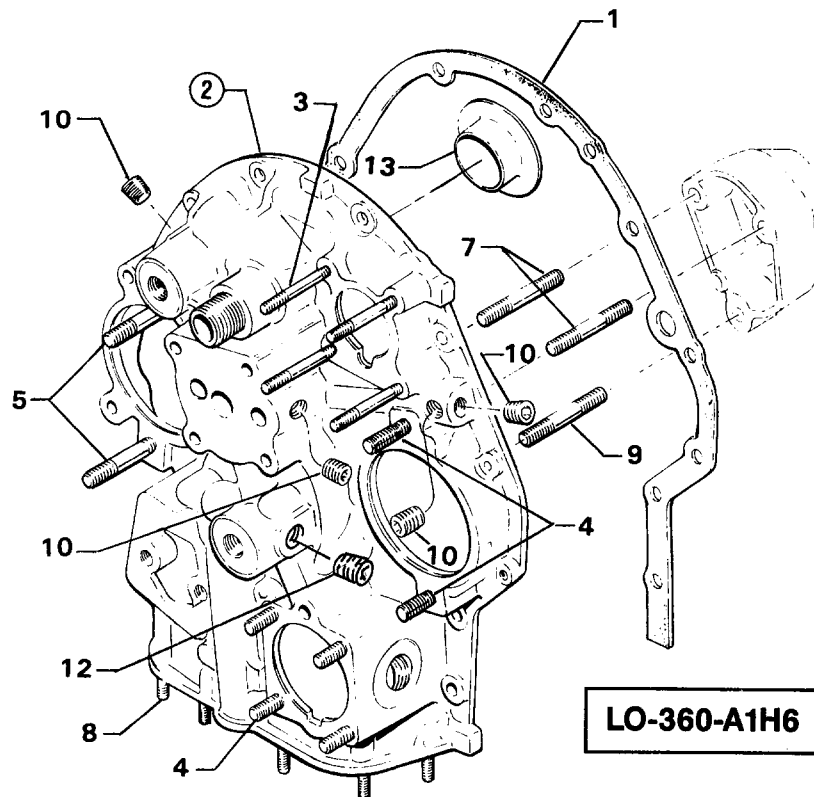
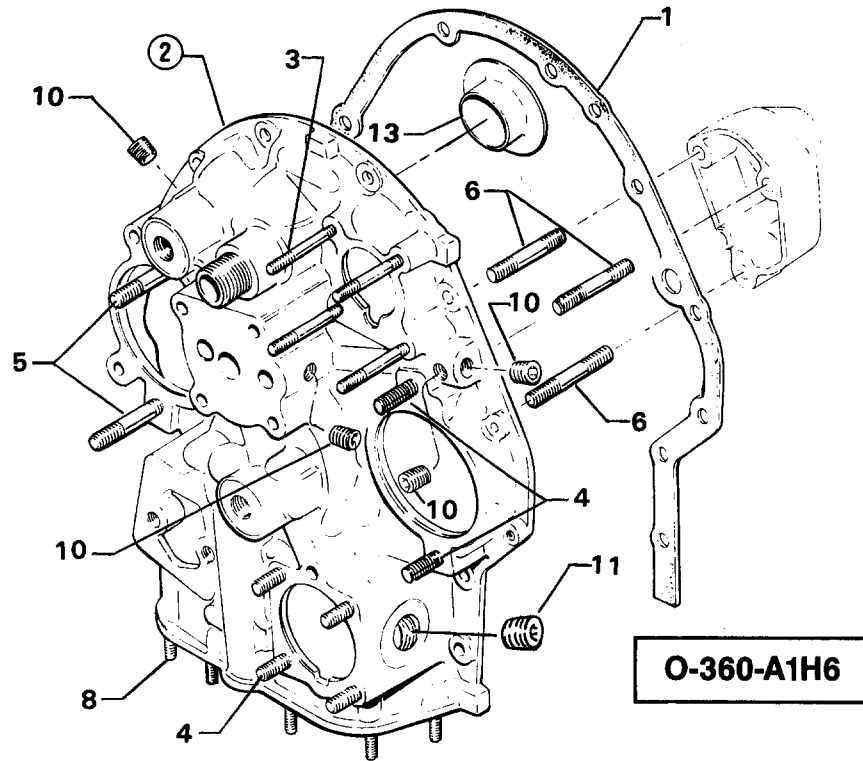
ACCESSORY HOUSING AND RELATED PARTS
ACCESSORY HOUSING ASSEMBLY

FIG. REF. 9	PART NUMBER	DESCRIPTION	QUANTITY PER ASSEMBLY
1	73818	GASKET, Accessory housing	1
2	77412*	HOUSING ASSEMBLY, Accessory	1
	21A21081**	HOUSING ASSEMBLY, Accessory	1
3	25C-22	STUD, 1/4-20 x 2-3/4 long	4
4	31C-12	STUD, 5/16-18 x 1-1/2 long	6
5	31C-19	STUD, 5/16-18 x 2-3/8 long	2
6	31CD-17*	STUD, 5/16-18 x 2-1/8 long, drilled	3
7	31CD-17**	STUD, 5/16-18 x 2-1/8 long, drilled	2
8	75888	STUD, 1/4-20 x 1-1/4 long	6
9	31CD-22**	STUD, 5/16-18 x 2-3/4 long, drilled	1
10	1102	PLUG, 1/8-27 NPT, Allen head	4
11	STD-784*	PLUG, 3/8 pipe, Allen head	1
12	STD-783**	PLUG, 1/4-18 NPT, Allen head	1
13	76119	SHIELD, Accessory breather oil	1

* Used on O-360-A1H6 engines.

** Used on LO-360-A1H6 engines.

Williamsport Plant



3265

Figure 9. ACCESSORY HOUSING ASSEMBLY

Williamsport Plant

ACCESSORY HOUSING AND RELATED PARTS
OIL PUMP AND ACCESSORY HOUSING ATTACHING PARTS

FIG. REF. 10	PART NUMBER	DESCRIPTION	QUANTITY PER ASSEMBLY
1	78531 *	BODY, Oil pump	1
	LW-11839 **	BODY, Oil pump	1
2	05K19423-S	KIT, Oil pump impeller	1
3	61174	SHAFT, Oil pump drive	1
4	STD-35	WASHER, 5/16 plain	3
5	STD-1420	NUT, 5/16-18 slotted	3
6	LW-14260	SEAL, Oil, tachometer drive	1
7	STD-8	WASHER, 1/4 plain	12
8	STD-160	WASHER, 1/4 lock, internal teeth	12
9	LW-25-0.94	BOLT, 1/4-20 x 15/16 long, hex. head	10
10	LW-25-1.50	BOLT, 1/4-20 x 1-1/2 long, hex. head	2
11	STD-1227 **	WASHER, 1/4 copper	2
12	LW-25S2.75 **	BOLT, 1/4-20 x 2-3/4 long, hex. hd., drilled end	2
13	STD-8 **	WASHER, 1/4 plain	2
14	STD-1409 **	NUT, 1/4-20 slotted shear	2

* Used on O-360-A1H6 engines.

** Used on LO-360-A1H6 engines.

Williamsport Plant

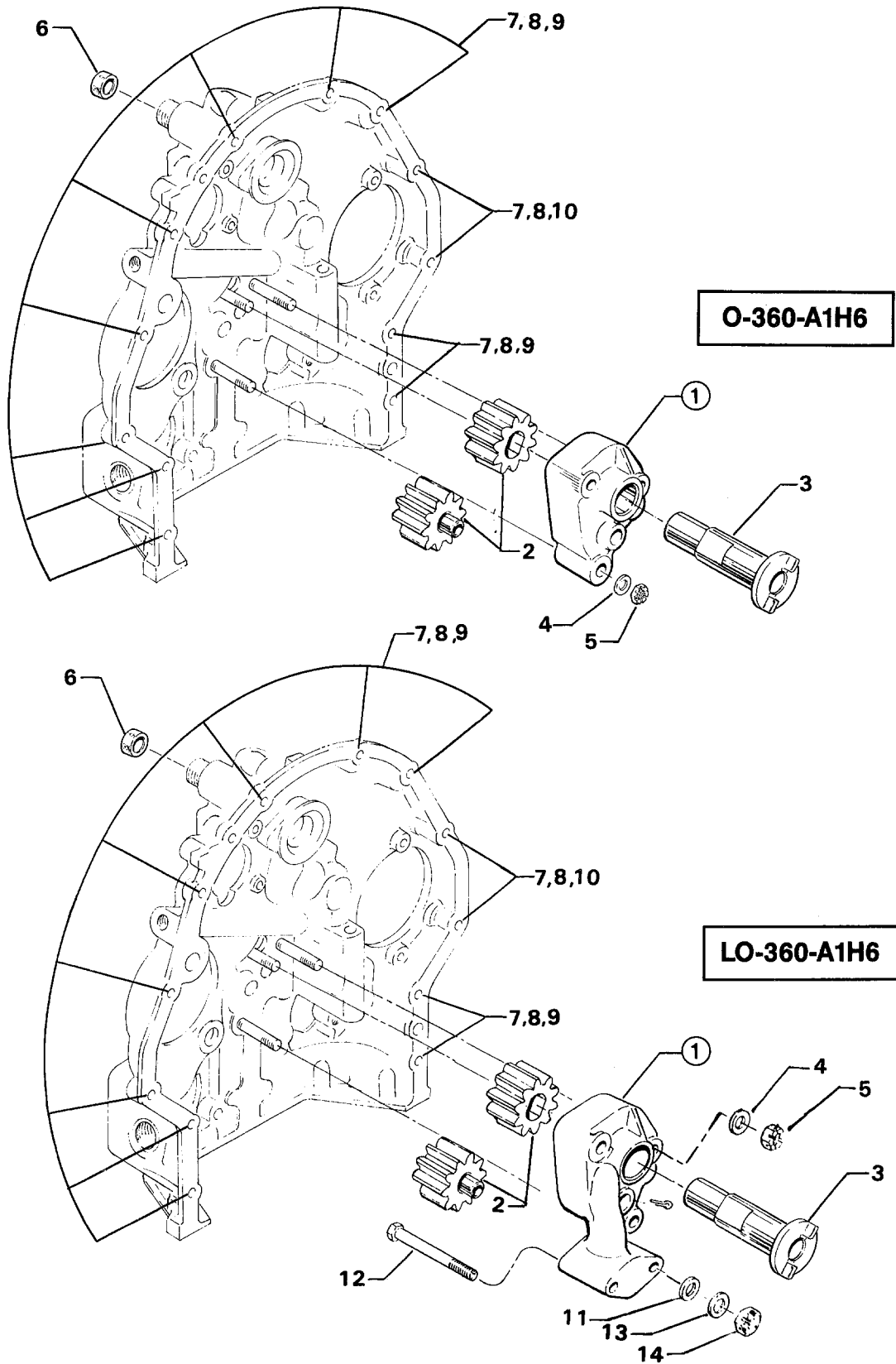
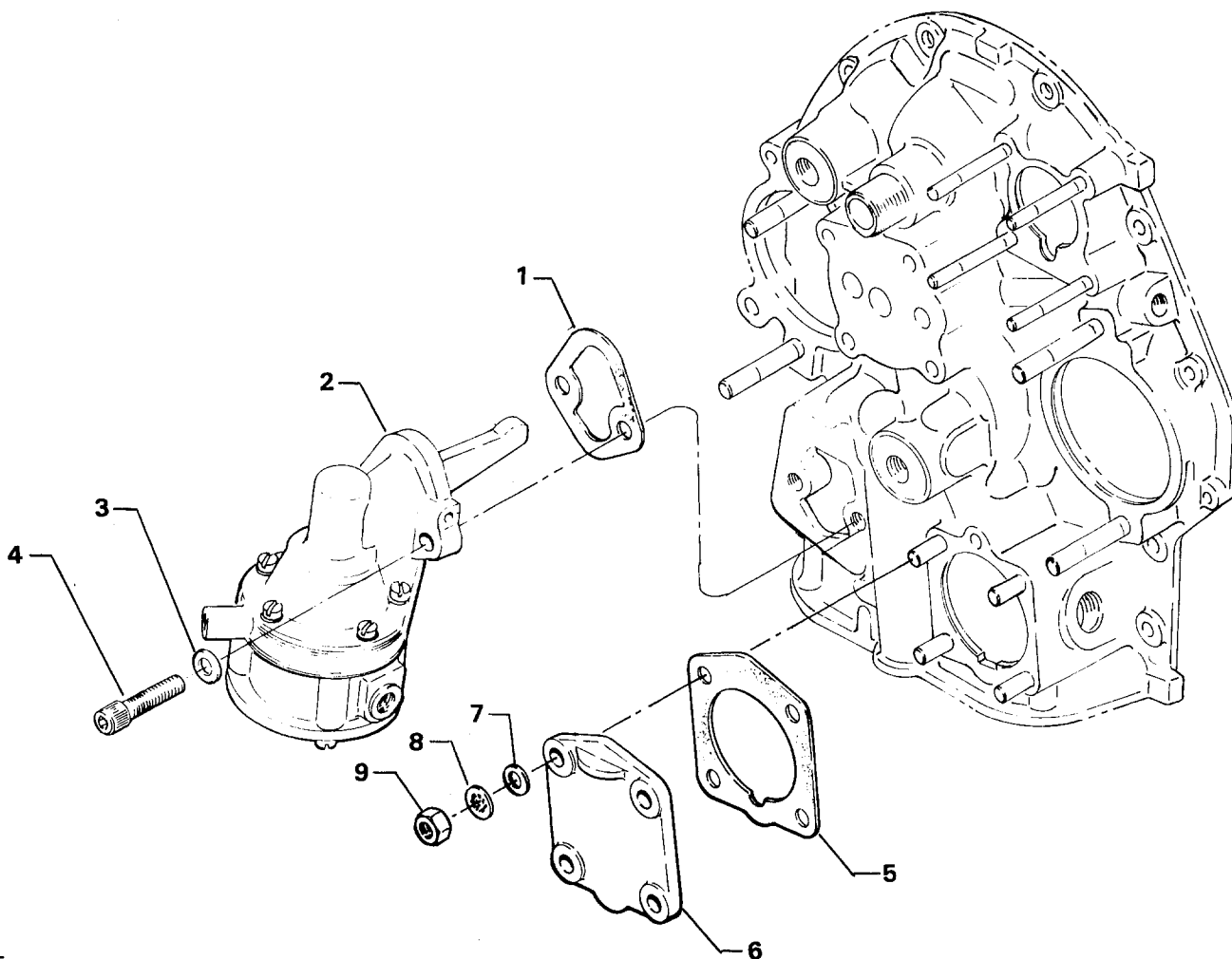


Figure 10. OIL PUMP AND ACCESSORY HOUSING ATTACHING PARTS

Williamsport Plant

ACCESSORY HOUSING AND RELATED PARTS
FUEL PUMP AND GOVERNOR DRIVE ADAPTER PAD COVER

FIG. REF. 11	PART NUMBER	DESCRIPTION	QUANTITY PER ASSEMBLY
1	60096	GASKET, Fuel pump	1
2	LW-16335	FUEL PUMP, Low pressure, dual diaphragm	1
3	STD-33	WASHER, 3/8 plain	2
4	STD-1882	SCREW, 3/8-16 x 1-9/32 long, socket hd., dr. hd.	2
5	69551	GASKET, Accessory drive adapter	1
6	69106	COVER, Governor drive adapter pad	1
7	STD-35	WASHER, 5/16 plain	4
8	STD-475	WASHER, 5/16 lock, internal teeth	4
9	STD-1410	NUT, 5/16-18 plain	4



3271

Figure 11. FUEL PUMP AND GOVERNOR DRIVE ADAPTER PAD COVER

Williamsport Plant

ACCESSORY HOUSING AND RELATED PARTS
VACUUM PUMP DRIVE AND COVER

FIG. REF. 12	PART NUMBER	DESCRIPTION	QUANTITY PER ASSEMBLY
1	61183	GASKET, Accessory adapter	1
2	61098	ADAPTER ASSY., Vacuum pump	1
3	STD-1774	PIN, 1/8 dia. x 1/4 long	1
4	STD-2217	SEAL, Oil, 7/8 I.D. x 1-1/2 O.D. x 5/16 wide	1
5	72970	GEAR ASSY., Vacuum pump driven	1
6	71596	WASHER, Accessory driven gear	1
7	8313	GASKET, Vacuum pump	1
8	60430	COVER, Vacuum pump	1
9	STD-8	WASHER, 1/4 plain	4
10	STD-160	WASHER, 1/4 lock, internal teeth	4
11	STD-1411	NUT, 1/4-20 plain	4

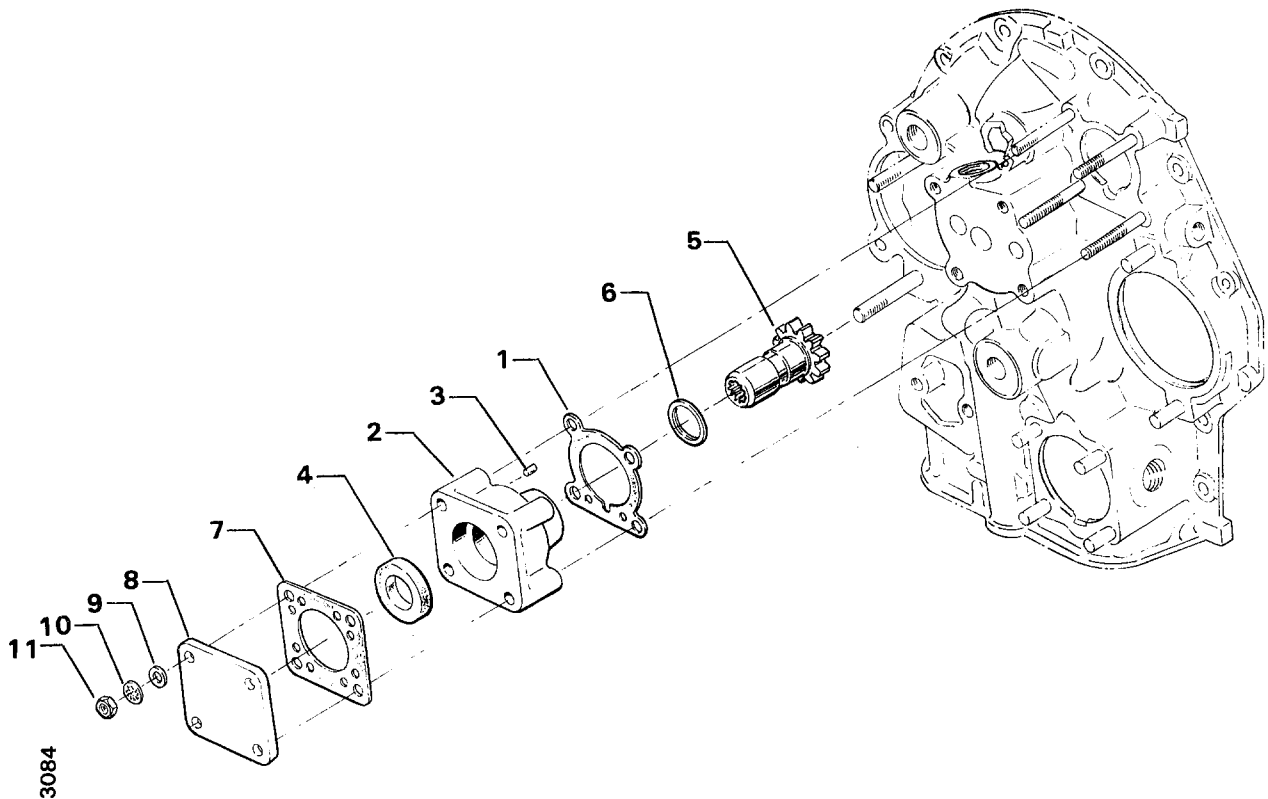


Figure 12. VACUUM PUMP DRIVE AND COVER

Williamsport Plant

ACCESSORY HOUSING AND RELATED PARTS
OIL FILTER AND OIL COOLER BYPASS VALVE

FIG. REF. 13	PART NUMBER	DESCRIPTION	QUANTITY PER ASSEMBLY
1	LW-12795	GASKET, Oil filter adapter	1
2	77852	OIL FILTER BASE ASSEMBLY	1
3	54D19626 *	OIL FILTER, Textron (long with stud)	1
4	STD-8	WASHER, 1/4 plain	4
5	STD-160	WASHER, 1/4 lock, internal teeth	1
6	STD-1411	NUT, 1/4-20 plain	1
7	STD-1856	SCREW, 1/4-20 x 1.00 long, hex. hd., self-locking	3
8	53E19600	VALVE ASSY., Temp. control, oil cooler bypass	1
9	76510	GASKET, Valve assembly	1
10	25C-10	STUD, 1/4-20 x 1-1/4 long	1
11	06E19769-0.63	GASKET, 7/8 O.D. x 5/8 I.D. x 3/32 annular	1
12	69675	CONNECTOR, Accessory hsg. to oil cooler inlet hose	1
13	STD-784	PLUG, 3/8 pipe, Allen	2
14	71140	FITTING, Breather	1

* Reference latest edition of SSP-885 for oil filter kits and replacement filters.

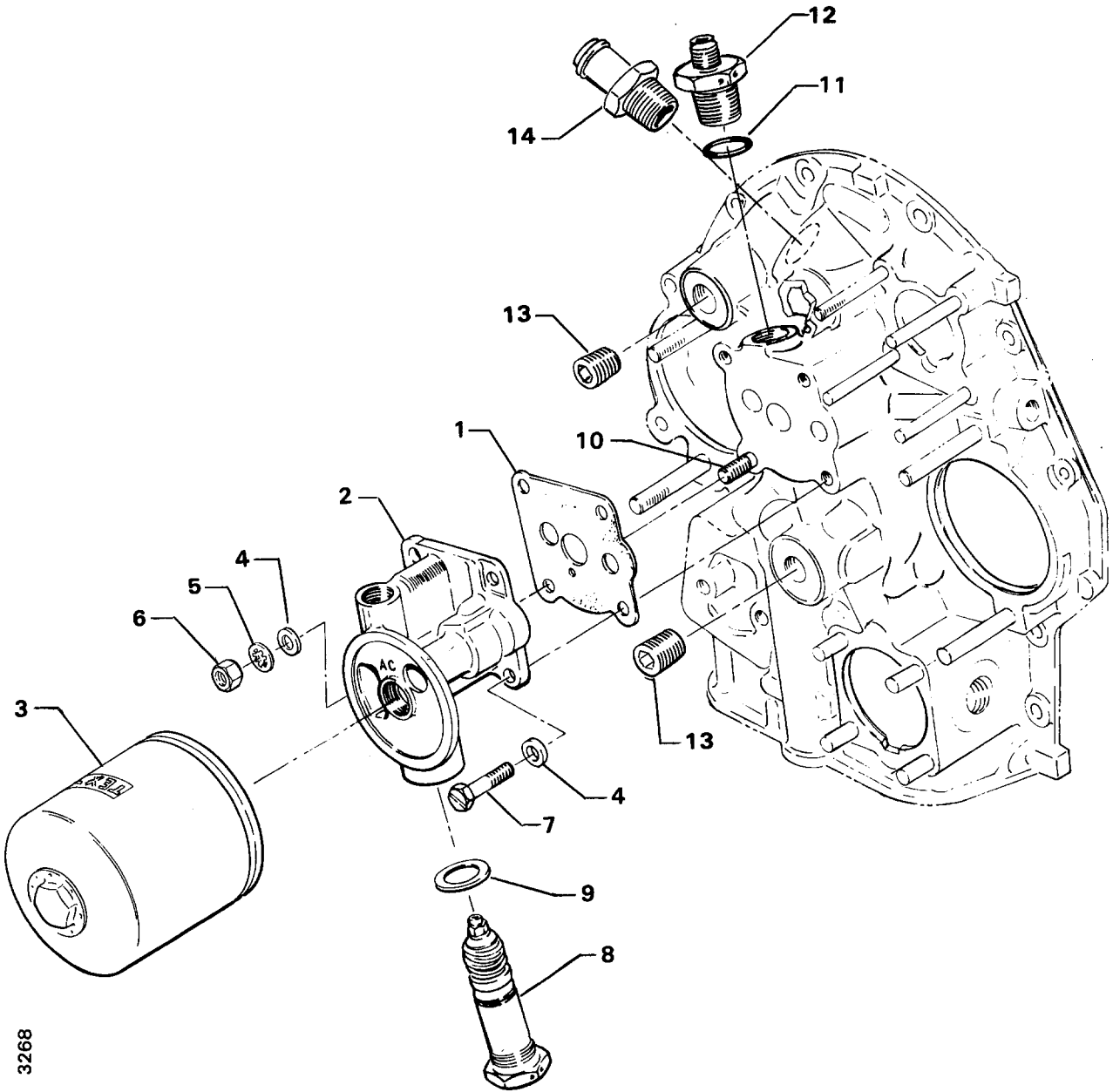


Figure 13. OIL FILTER AND OIL COOLER BYPASS VALVE

SECTION

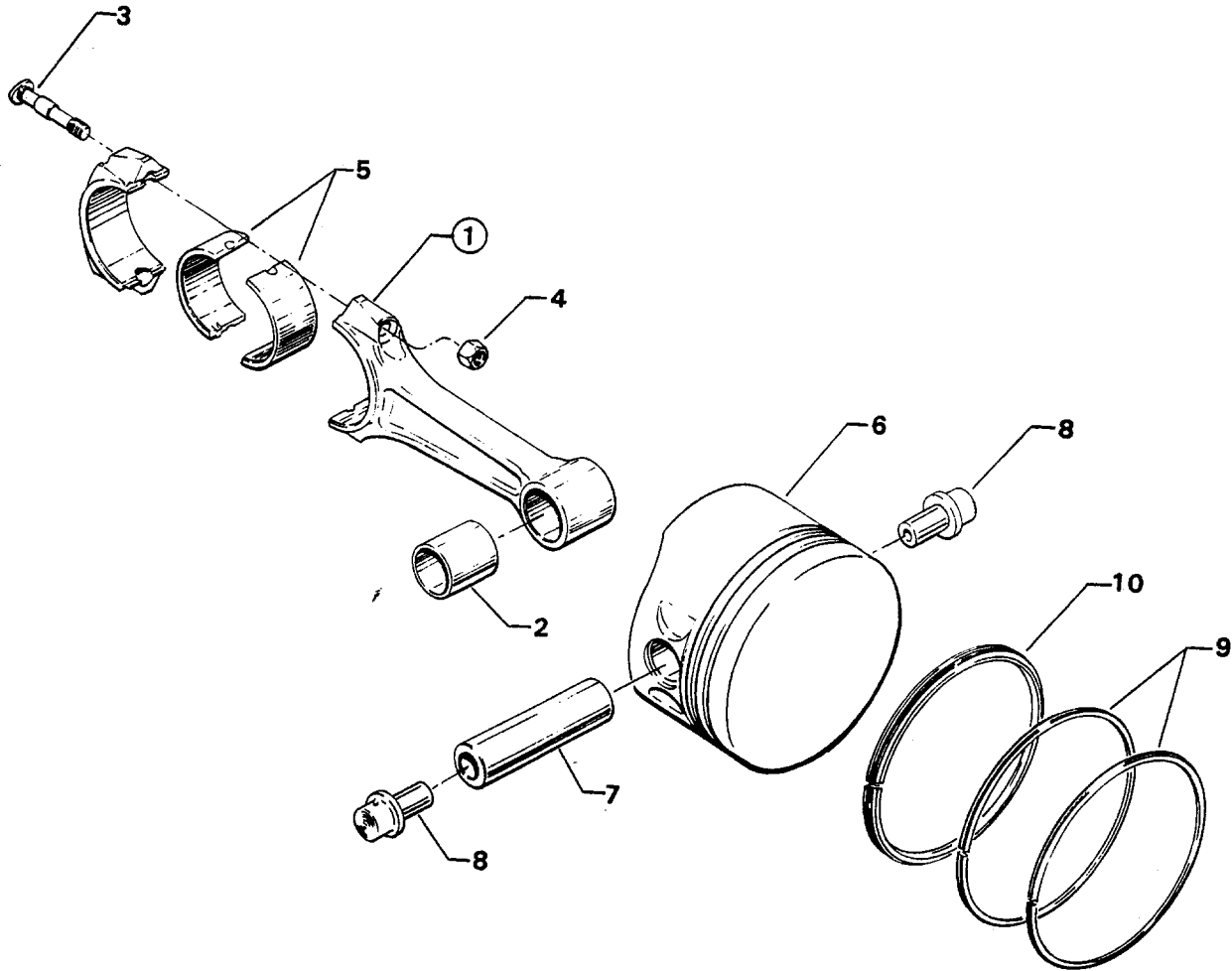
3

**CYLINDER, PISTON
AND VALVE TRAIN**

Williamsport Plant

CYLINDER, PISTON AND VALVE TRAIN
CONNECTING RODS, PISTONS AND RING ASSEMBLIES

FIG. REF. 14	PART NUMBER	DESCRIPTION	QUANTITY PER ASSEMBLY
1	LW-11750	CONNECTING ROD ASSEMBLY	4
2	LW-13923	BUSHING, Connecting rod, upper	4
3	75061	BOLT, Connecting rod	8
4	LW-12186	NUT, Connecting rod bolt	8
5	LW-13522	BEARING, Connecting rod	8
	LW-16048	BEARING, Connecting rod (alternate)	8
	LW-13521	BEARING, Connecting rod (alternate)	8
6	75089	PISTON, Compression ratio 8.50:1	4
7	LW-14077	PIN, Piston	4
8	LW-11775	PLUG, Piston pin	8
9	74241	RING, Piston, compression	8
10	73857	RING, Piston, oil regulating, expander type	4



3004

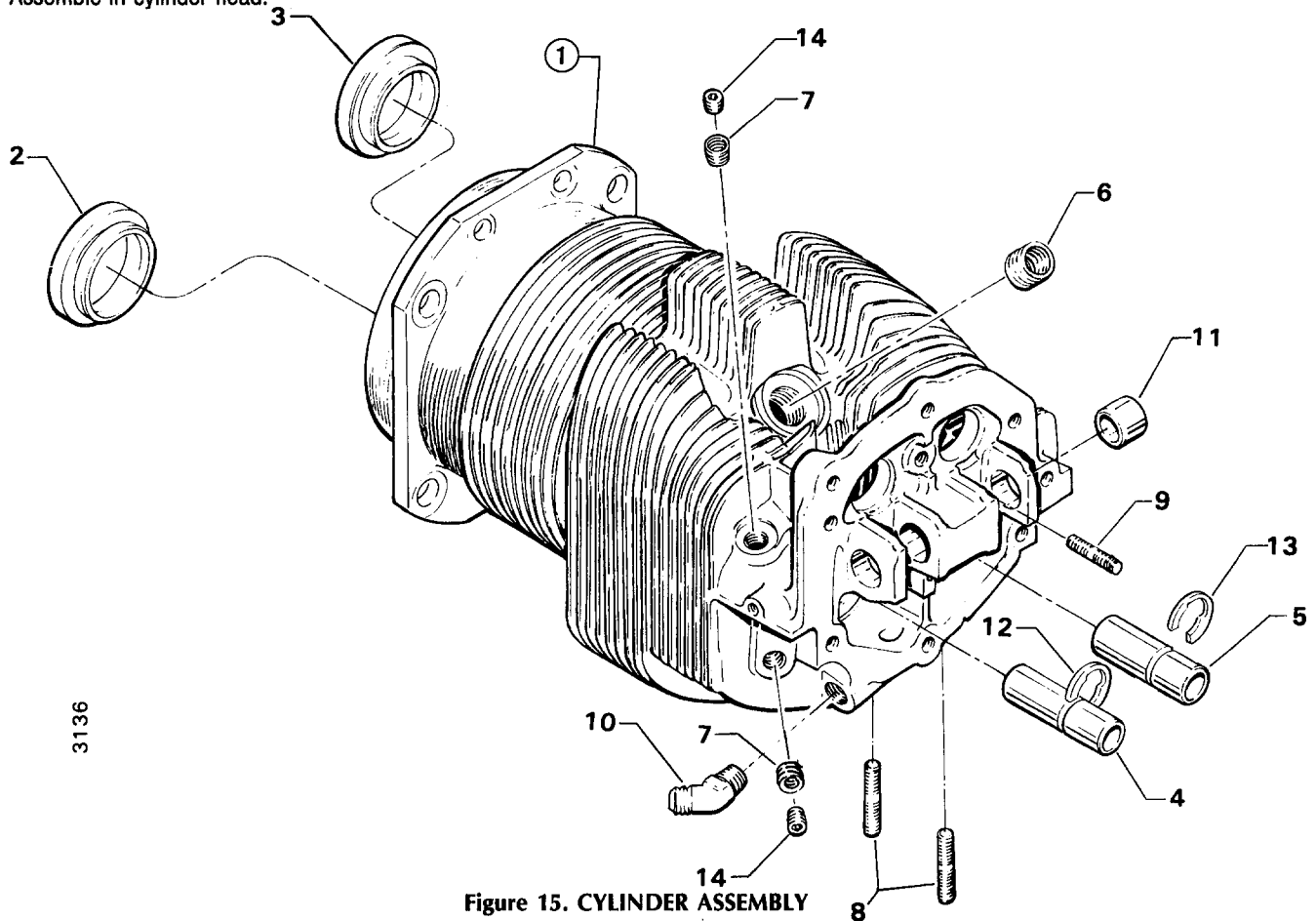
Figure 14. CONNECTING RODS, PISTONS AND RING ASSEMBLIES

Williamsport Plant

CYLINDER, PISTON AND VALVE TRAIN
CYLINDER ASSEMBLY

FIG. REF. 15	PART NUMBER	DESCRIPTION	QUANTITY PER ASSEMBLY
1	LW-12427	CYLINDER AND HEAD ASSY., Nitrided	4
2	72057	SEAT, Intake valve	4
3	72058	SEAT, Exhaust valve	4
4	76943 *	GUIDE, Valve intake, grooved (flangeless)	4
5	77160 * *	GUIDE, Valve exhaust, grooved (flangeless)	4
6	66796	INSERT, Spark plug	8
7	STD-1872	INSERT, 1/8-27 Heli-Coil taper pipe thread	8
8	31C-12	STUD, 5/16-18 x 1-1/2 long	8
9	25C-9	STUD, 1/4-20 x 1-1/8 long	4
10	MS20823-6D	ELBOW, 45°, 3/8 flared tube	4
11	66610	BUSHING, Rocker shaft	16
12	LW-19298	RING, Guide retaining, intake	4
13	LW-19299	RING, Guide retaining, exhaust	4
14	1102★	PLUG, 1/8-27 NPT, Allen head	4

- * Item No. 12 valve guide ring Part No. LW-19298 must be ordered separately when ordering this part. Refer to latest edition of Service Instruction No. 1256.
- * * Item No. 13 valve guide ring Part No. LW-19299 must be ordered separately when ordering this part. Refer to latest edition of Service Instruction No. 1256.
- ★ Assemble in cylinder head.



3136

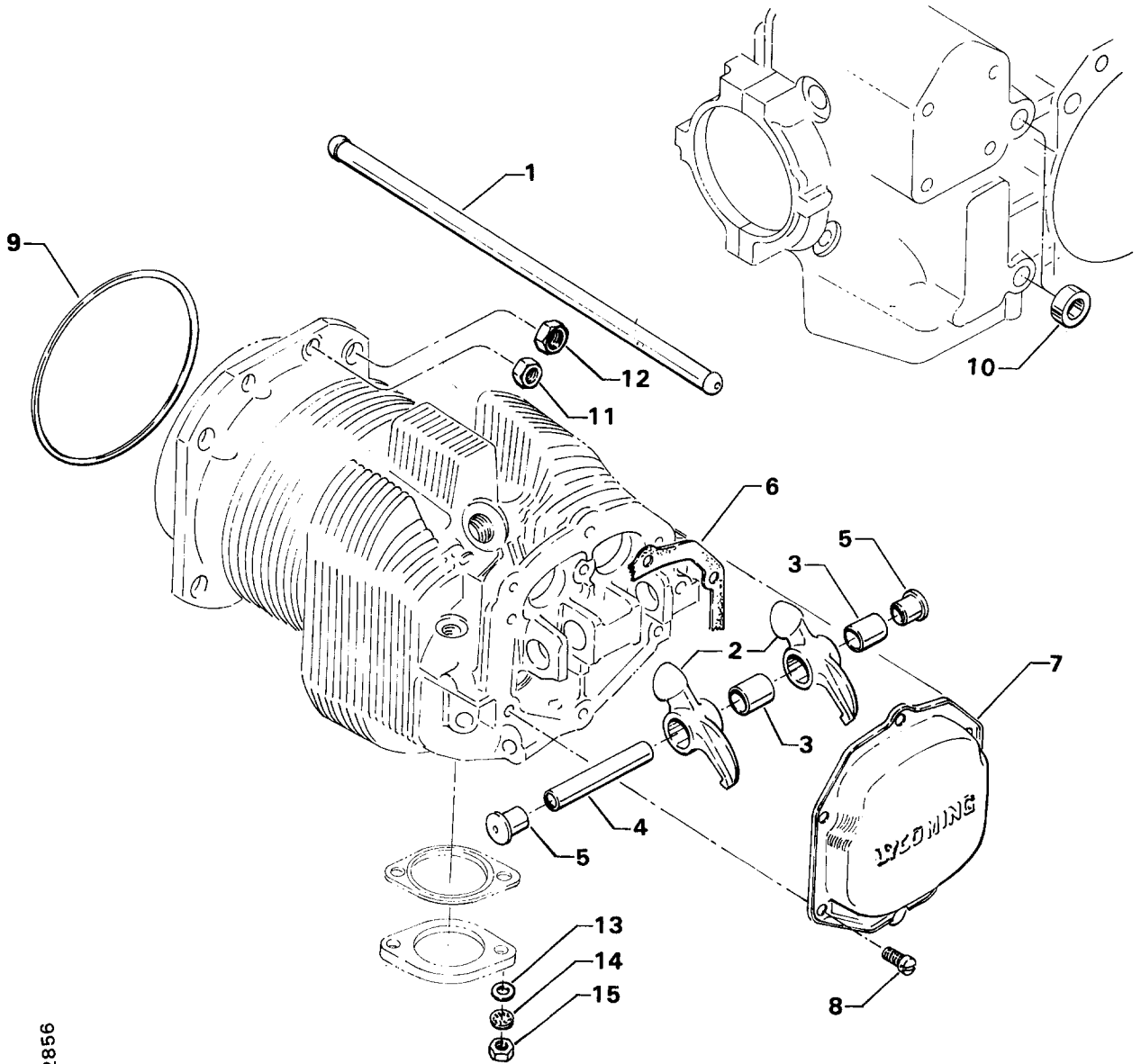
Figure 15. CYLINDER ASSEMBLY

Williamsport Plant

CYLINDER, PISTON AND VALVE TRAIN
CYLINDER RELATED PARTS

FIG. REF. 16	PART NUMBER	DESCRIPTION	QUANTITY PER ASSEMBLY
1	73434 *	ROD ASSEMBLY, Push	AR
	73435 *	ROD ASSEMBLY, Push	AR
	73436 *	ROD ASSEMBLY, Push	AR
	73437 *	ROD ASSEMBLY, Push	AR
2	17F19353	ROCKER ASSEMBLY, Valve	8
3	74637	BUSHING, Valve rocker	8
4	LW-13790	SHAFT, Valve rocker	4
5	LW-12892	THRUST BUTTON, Rocker shaft	8
6	75906	GASKET, Rocker box cover	4
7	61247	COVER, Rocker box	4
8	STD-1925	SCREW, 1/4-20 x 5/8 long, pan head, self-lock	24
9	71481	RING, Oil seal, 3/32 dia. x 4-27/32 I.D.	4
10	74887	SPACER, 33/64 I.D. x 7/8 O.D. x 3/8 thick	2
11	383-B	NUT, 3/8-24 plain	16
12	STD-2090	NUT, 1/2-20 plain	18
13	STD-35	WASHER, 5/16 plain	8
14	STD-475	WASHER, 5/16 lock, internal teeth	8
15	STD-1410	NUT, 5/16-18 plain	8

* See latest edition of Textron Lycoming Service Instruction No. 1060 for complete push rod application.



2856

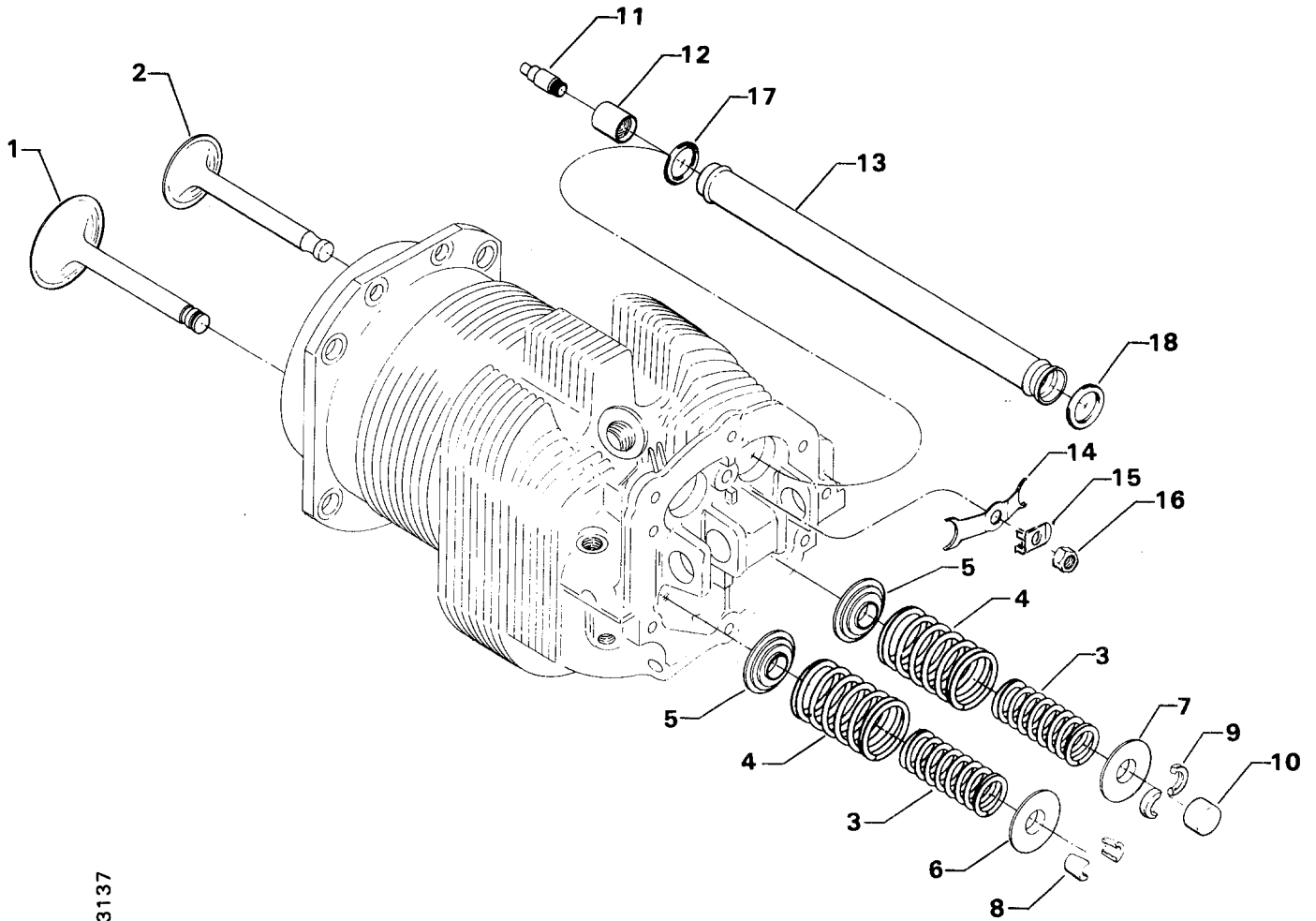
Figure 16. CYLINDER RELATED PARTS

Williamsport Plant

CYLINDER, PISTON AND VALVE TRAIN
VALVE ASSEMBLY

FIG. REF. 17	PART NUMBER	DESCRIPTION	QUANTITY PER ASSEMBLY
1	73938	VALVE, Intake	4
2	LW-19001	VALVE, Exhaust (rotator type)	4
3	LW-11795	SPRING, Valve, inner	8
4	LW-11800	SPRING, Valve, outer	8
5	LW-13323	SEAT, Valve spring, lower	8
6	LW-10077	SEAT, Valve spring, upper intake	4
7	LW-16475	SEAT, Valve spring, upper exhaust (rotator type)	4
8	60009	KEY, Valve, intake	8
9	MS13997-3	KEY, Valve, exhaust (rotator type)	8
10	MS13998-3	CAP, Valve stem, exhaust (rotator type)	4
11	78290	PLUNGER ASSY., Hydraulic tappet	8
12	78524	SOCKET, Push rod, hydraulic tappet	8
13	LW-11485	TUBE, Push rod shroud	8
14	LW-14995	SPRING, Shroud tube	4
15	LW-12272	LOCKPLATE, Shroud tube	4
16	STD-1411	NUT, 1/4-20 plain	4
17	LW-18661	SEAL, Shroud tube	8
18	70310	SEAL, Shroud tube	8

Williamsport Plant



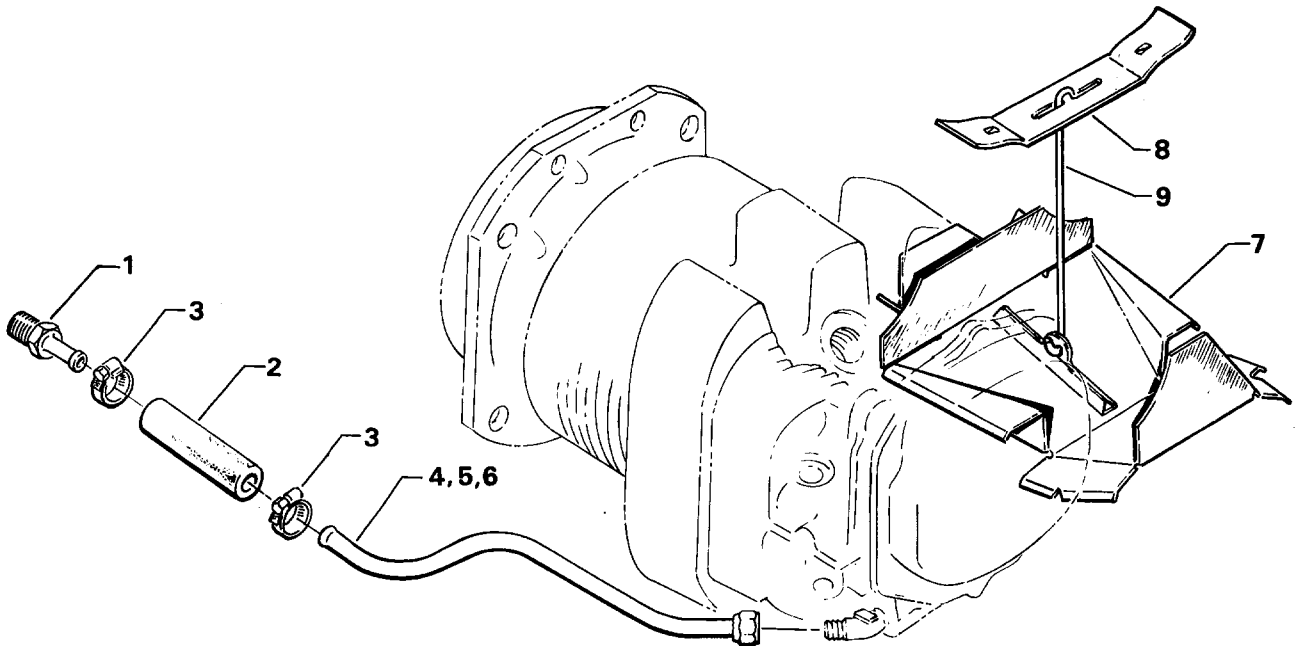
3137

Figure 17. VALVE ASSEMBLY

Williamsport Plant

CYLINDER, PISTON AND VALVE TRAIN
CYLINDER HEAD DRAIN TUBES AND INTERCYLINDER COOLING BAFFLES

FIG. REF. 18	PART NUMBER	DESCRIPTION	QUANTITY PER ASSEMBLY
1	STD-684	NIPPLE, Straight, 3/8 I.D. hose	4
2	STD-1821	HOSE, 3/8 I.D. x 2-1/2 long	4
3	LW-15592-5-05	CLAMP, Hose	8
4	68759	TUBE ASSY., Oil drain, cylinder no. 1	1
5	68760	TUBE ASSY., Oil drain, cylinder no. 2	1
6	68761	TUBE ASSY., Oil drain, cylinder nos. 3 & 4	2
7	75339	BAFFLE ASSY., Intercylinder	2
8	71611	RETAINER, Intercylinder baffle	2
9	71610	HOOK, Intercylinder baffle retainer	2



3016

Figure 18. CYLINDER HEAD DRAIN TUBES AND INTERCYLINDER COOLING BAFFLES

SECTION

4

IGNITION SYSTEM

Williamsport Plant

IGNITION SYSTEM
MAGNETOS, MAGNETO DRIVES AND SPARK PLUGS

FIG. REF. 19	PART NUMBER	DESCRIPTION	QUANTITY PER ASSEMBLY
1	61665	GEAR, Magneto, impulse coupling	1
2	STD-761	PIN, Cotter, 3/32 x 1.00 long	1
3	68C19622	GEAR, Magneto	1
4	62224	GASKET, Magneto adapter	1
5	LW-12706	ADAPTER, Magneto, impulse coupling	1
6	LW-12681	GASKET, Magneto	2
7	66HP-OSANN *	MAGNETO, Right (4270)	1
	66HC25SFNN *	MAGNETO, Left (4273) impulse coupling	1
	66HP-ORANN **	MAGNETO, Right (4202)	1
	66HC25RFNN **	MAGNETO, Left (4230) impulse coupling	1
8	67P20414	HARNESS ASSY., Ignition, right (M-2982)	1
	67P20415	HARNESS ASSY., Ignition, left (M-2981)	1
9	76734	ZIP STRAP	4
10	76961	CLAMP, Magneto	4
11	STD-475	WASHER, 5/16 lock, internal teeth	4
12	STD-1727	WASHER, Plain, 3/4 O.D. x 1 1/32 I.D. x 1/8 thick	4
13	STD-1410	NUT, 5/16-18 plain	4
14	1182-B3★	SPARK PLUG, (Champion REM40E)	8

* Used on O-360-A1H6 engines.

** Used on LO-360-A1H6 engines.

★ Item No. 14 spark plug is used in current production only. Additional spark plugs are available for this engine. See latest edition of Service Instruction No. 1042 for complete listing of all approved spark plugs.

NOTE

Individual harness leads may be replaced by ordering either M-1985-48 (3T, 2B, 4B, 1B, 3B, 4T) or M-1985-72 (1T, 2T). Replacement lead assemblies have spark plug terminal end assembled and are shipped with necessary parts to complete magneto end.

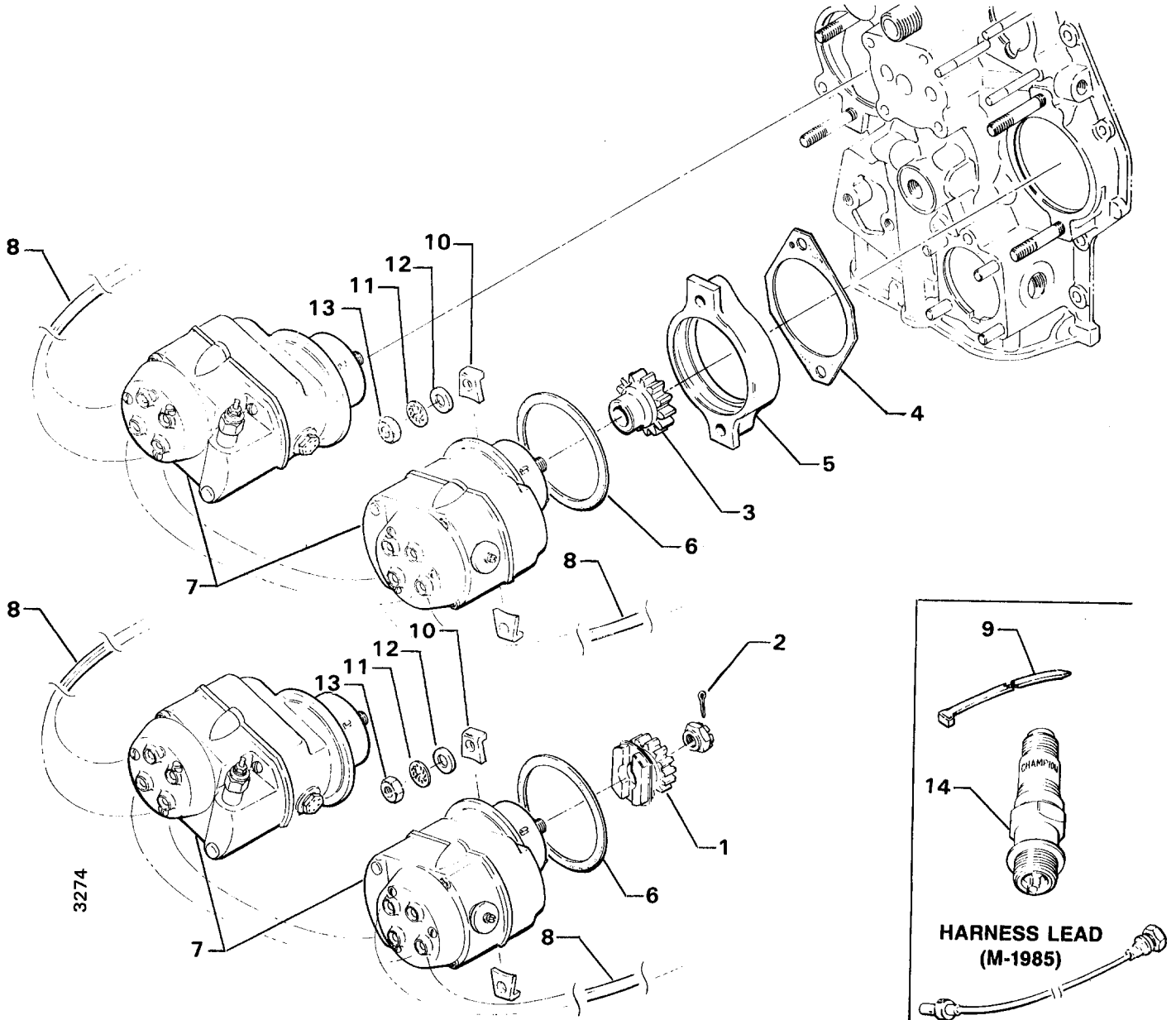


Figure 19. MAGNETOS, MAGNETO DRIVES AND SPARK PLUGS

Williamsport Plant

BAG - MAGNETO HARNESS ATTACHING

PART NO. 01P19762-1

Part No.	Part Name	Qty.
01P19762-1	BAG - MAGNETO HARNESS ATTACHING	1
LW-16266-25-25	CLIP, 1 wire	2
LW-14060	CLIP, 2 wire, 1/4 screw	3
STD-8	WASHER, 1/4 plain	8
STD-1874	SCREW, Rocker box	6
76734	ZIP STRAP	8
LW-16266-25-50	CLIP, 4 wire	1
STD-1411	NUT, 1/4 plain	2
STD-696	WASHER, 1/4 thin	4
AN500-416-18	SCREW, 1/4 x 1-1/8 long	3
LW-M-2375	PLATE, 2 wire	2

SECTION

5

ELECTRICAL SYSTEM

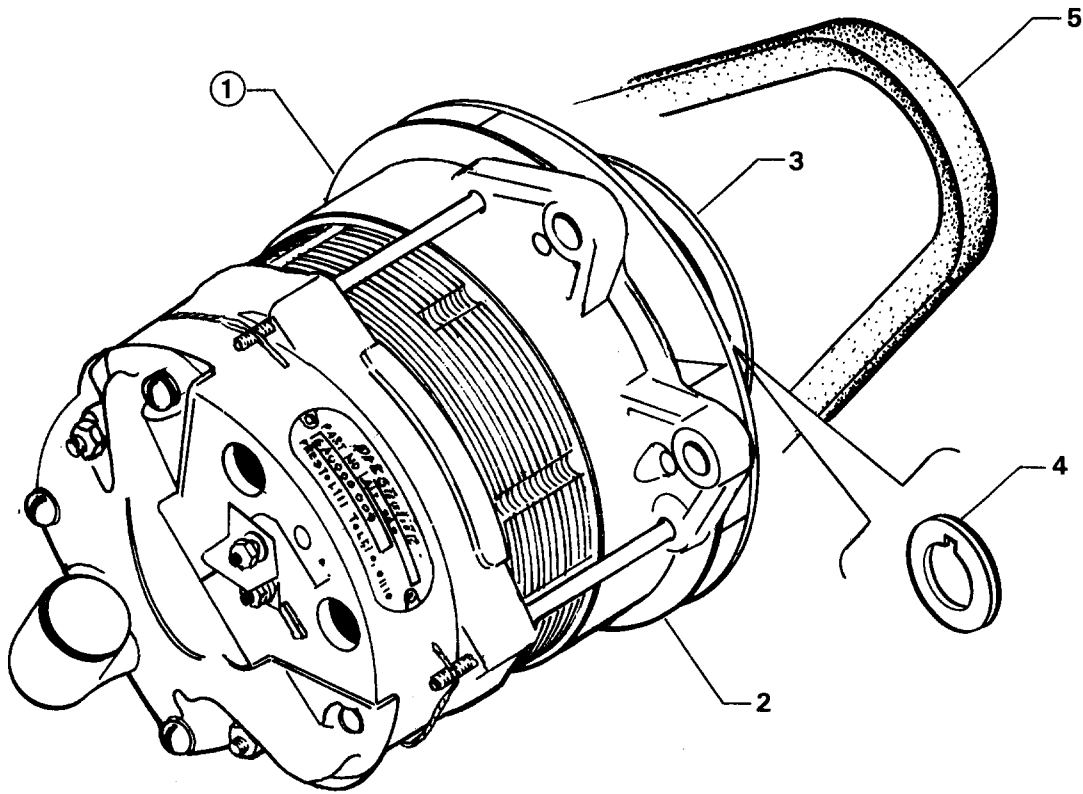
Williamsport Plant

ELECTRICAL COMPONENTS
ALTERNATOR ASSEMBLY AND BELT

FIG. REF. 20	PART NUMBER	DESCRIPTION	QUANTITY PER ASSEMBLY
1	32B19561	ALTERNATOR ASSEMBLY	1
2	LW-14318	ALTERNATOR, 12 volt, 70 amp. (ALX-8421-LS)	1
3	36B19475	PULLEY, Alternator	1
4	LW-15403	WASHER	1
5	37A19773-380	BELT, Alternator, 3/8 wide	1

NOTE

See latest edition of Service Instruction No. 1154 for complete listing of FAA approved starters, generators, alternators, regulators and relays.



2250

Figure 20. ALTERNATOR ASSEMBLY AND BELT

Williamsport Plant

ELECTRICAL COMPONENTS
STARTER MOTOR AND ATTACHING PARTS

FIG. REF. 21	PART NUMBER	DESCRIPTION	QUANTITY PER ASSEMBLY
1	LW-15571 *	STARTER, 12 volt (3.38:1 internal reduction) MZ-4222	1
	LW-14215 **	STARTER, 12 volt (3.38:1 internal reduction) MZ-4220	1
2	STD-35	WASHER, 5/16 plain	4
3	STD-475	WASHER, 5/16 lock, internal teeth	4
4	LW-31-1.16	BOLT, 5/16-18 x 1-5/32 long, hex. head	1
5	STD-1410	NUT, 5/16-18 plain	3

- * Used on O-360-A1H6 engines.
- ** Used on LO-360-A1H6 engines.

NOTE

See latest edition of Service Instruction No. 1154 for complete listing of FAA approved starters, generators, alternators, regulators and relays.

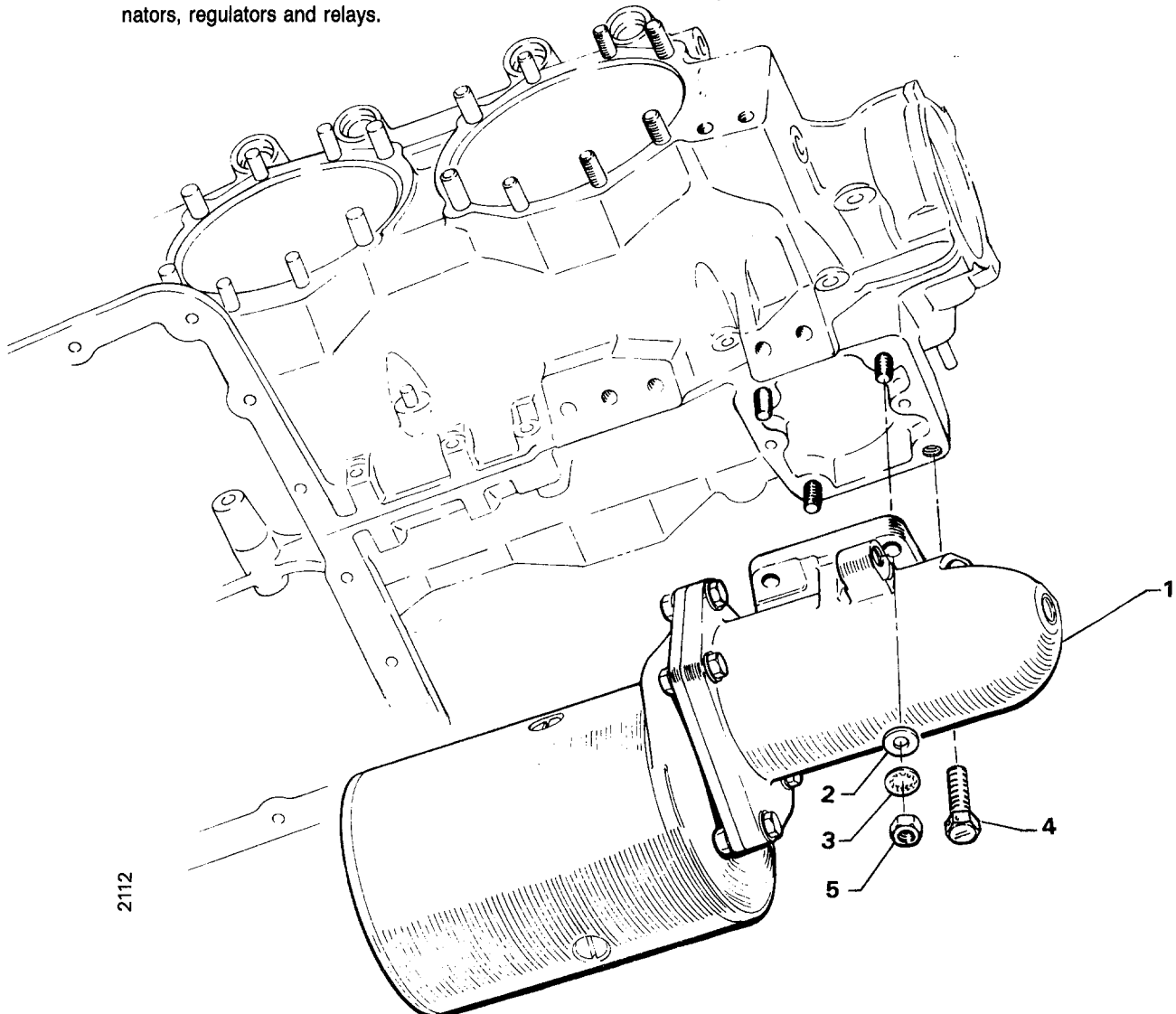


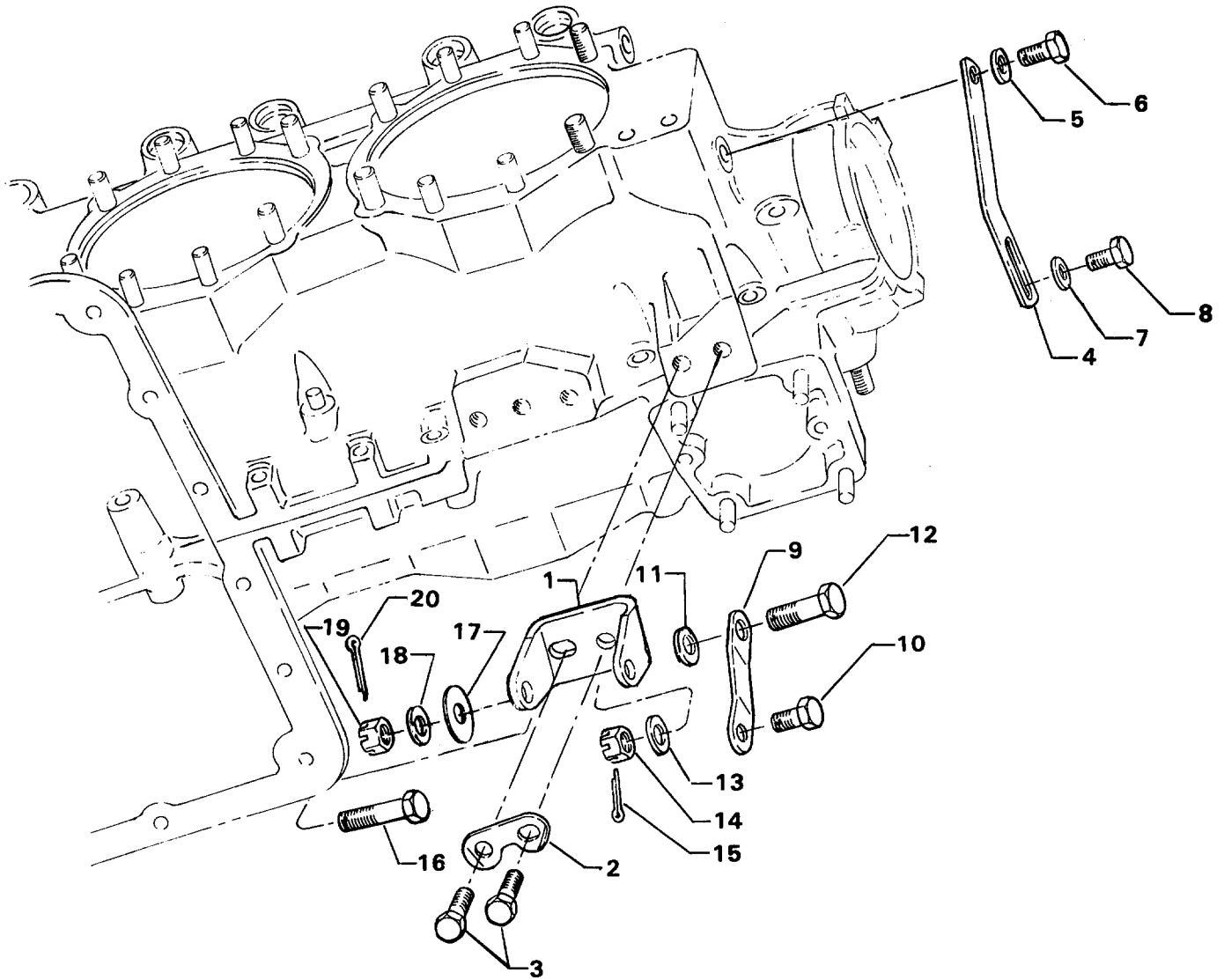
Figure 21. STARTER MOTOR AND ATTACHING PARTS

Williamsport Plant

ELECTRICAL COMPONENTS
ALTERNATOR MOUNTING AND ATTACHING PARTS

FIG. REF. 22	PART NUMBER	DESCRIPTION	QUANTITY PER ASSEMBLY
1	07A21097	BRACKET, Alternator	1
2	73383	LOCKPLATE, 5/16 bolt x 1.00 spacing	1
3	LW-31-0.94	BOLT, 5/16-18 x 15/16 long, hex. head	2
4	07F21098	LINK, Alternator adjusting	1
5	STD-35	WASHER, 5/16 plain	1
6	LW-31H0.75	BOLT, 5/16-18 x 3/4 long, hex. hd. dr.	1
7	STD-1727	WASHER, Plain, 3/4 O.D. x 11/32 I.D. x 1/8 thick	1
8	LW-31H0.75	BOLT, 5/16-18 x 3/4 long, hex. hd. dr.	1
9	07F21099	STRUT, Alternator support	1
10	LW-31H0.75	BOLT, 5/16-18 x 3/4 long, hex. hd. dr.	1
11	STD-690	WASHER, 13/16 O.D. x 25/64 I.D. x 1/16 thick	1
12	AN6-17	BOLT, 3/8-24 x 1-61/64 long, hex. hd. drilled end	1
13	STD-690	WASHER, 13/16 O.D. x 25/64 I.D. x 1/16 thick	AR
14	STD-872	NUT, 3/8-24 slotted	1
15	STD-713	PIN, Cotter, 3/32 dia. x 3/4 long	1
16	AN6-16	BOLT, 3/8-24 x 1-53/64 long, hex. hd. drilled end	1
17	76534	SHIM, 1-1/8 O.D. x 13/32 I.D. x .005 thick	AR
18	STD-690	WASHER, 13/16 O.D. x 25/64 I.D. x 1/16 thick	AR
19	STD-872	NUT, 3/8-24 slotted	1
20	STD-713	PIN, Cotter, 3/32 dia. x 3/4 long	1

Williamsport Plant



2485

Figure 22. ALTERNATOR MOUNTING AND ATTACHING PARTS

SECTION

6

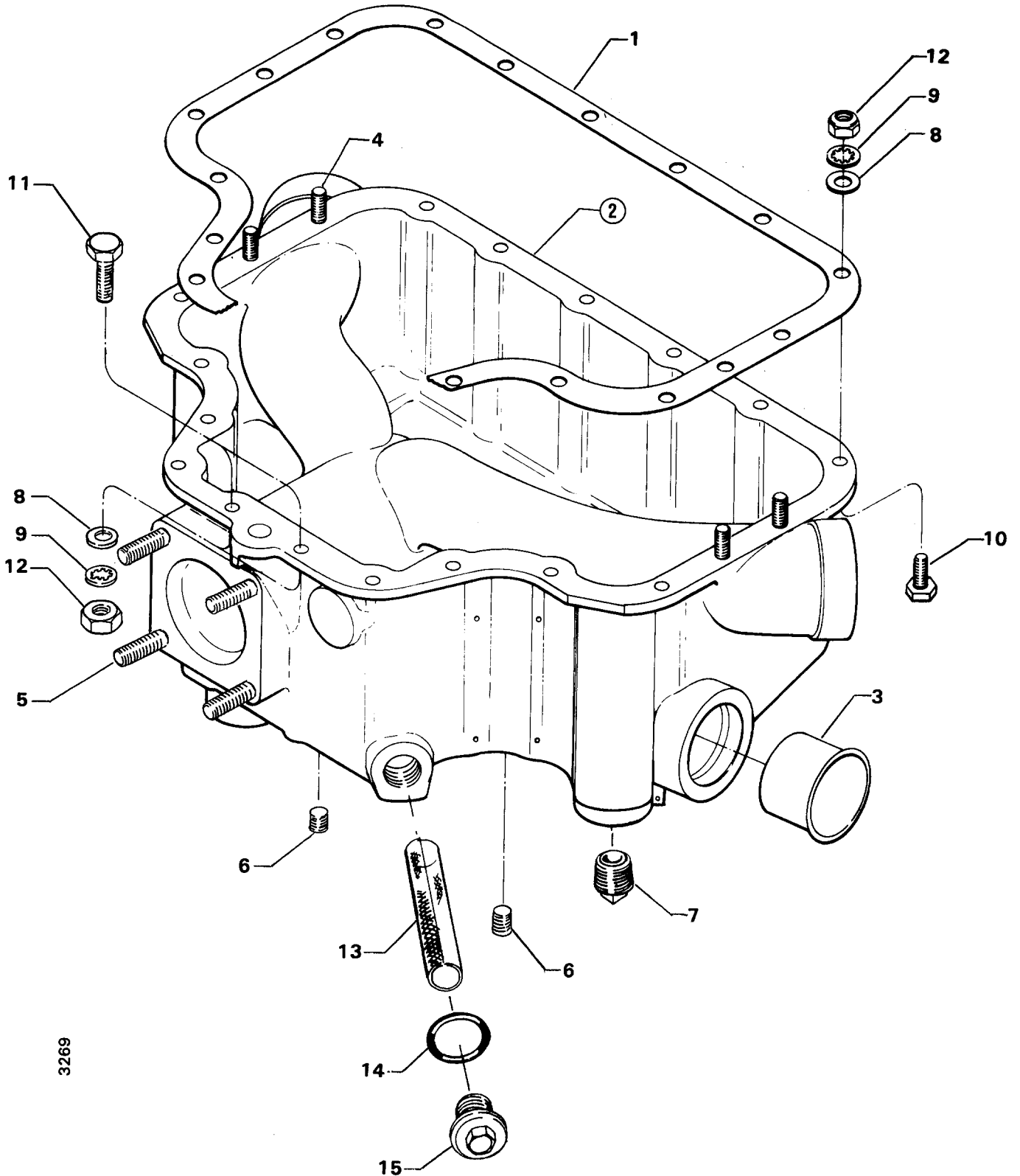
**OIL SUMP AND
INDUCTION SYSTEM**

Williamsport Plant

**OIL SUMP AND INDUCTION SYSTEM
OIL SUMP ASSEMBLY AND OIL SUCTION SCREEN**

FIG. REF. 23	PART NUMBER	DESCRIPTION	QUANTITY PER ASSEMBLY
1	LW-13353	GASKET, Oil sump	1
2	77159	SUMP ASSEMBLY, Oil	1
3	69602	CONNECTION, Intake pipe	4
4	61400	STUD, 1/4-20 x 1-3/16 long	4
5	31C-14	STUD, 5/16-18 x 1-3/4 long	4
6	1102	PLUG, 1/8-27 NPT, Allen head	2
7	STD-551	PLUG, 1/2-14 NPT, sq. hd. drilled	2
8	STD-8	WASHER, 1/4 plain	28
9	STD-160	WASHER, 1/4 lock, internal lock	20
10	LW-25-0.94	BOLT, 1/4-20 x 15/16 long, hex. hd.	8
11	LW-25-1.13	BOLT, 1/4-20 x 1-1/8 long, hex. hd.	2
12	STD-1411	NUT, 1/4-20 plain	18
13	70484	SCREEN, Oil suction	1
14	06E19769-1.00	GASKET, 1.00 I.D. x 1-1/4 O.D. x 3/32 annular	1
15	LW-12545	PLUG, 5/8 hex. head x 1.00-20 thread	1

Williamsport Plant



3269

Figure 23. OIL SUMP ASSEMBLY AND OIL SUCTION SCREEN

Williamsport Plant

OIL SUMP AND INDUCTION SYSTEM
INTAKE PIPES AND ATTACHING PARTS

FIG. REF. 24	PART NUMBER	DESCRIPTION	QUANTITY PER ASSEMBLY
1	71712	PIPE, Intake, no. 1 & 2 cylinders	2
2	71713	PIPE, Intake, no. 3 & 4 cylinders	2
3	69603	HOSE, 1-3/4 I.D. x 2-3/16 O.D. x 1-3/4 long	4
4	LW-15592-8-28	CLAMP, Hose	8
5	71973	GASKET, 2 bolt flange, 1-7/8 I.D.	4
6	73346	FLANGE, Intake pipe, upper	4
7	STD-8	WASHER, 1/4 plain	8
8	STD-160	WASHER, 1/4 lock, internal teeth	8
9	LW-25-1.25	BOLT, 1/4-20 x 1-1/4 long, hex. head	8

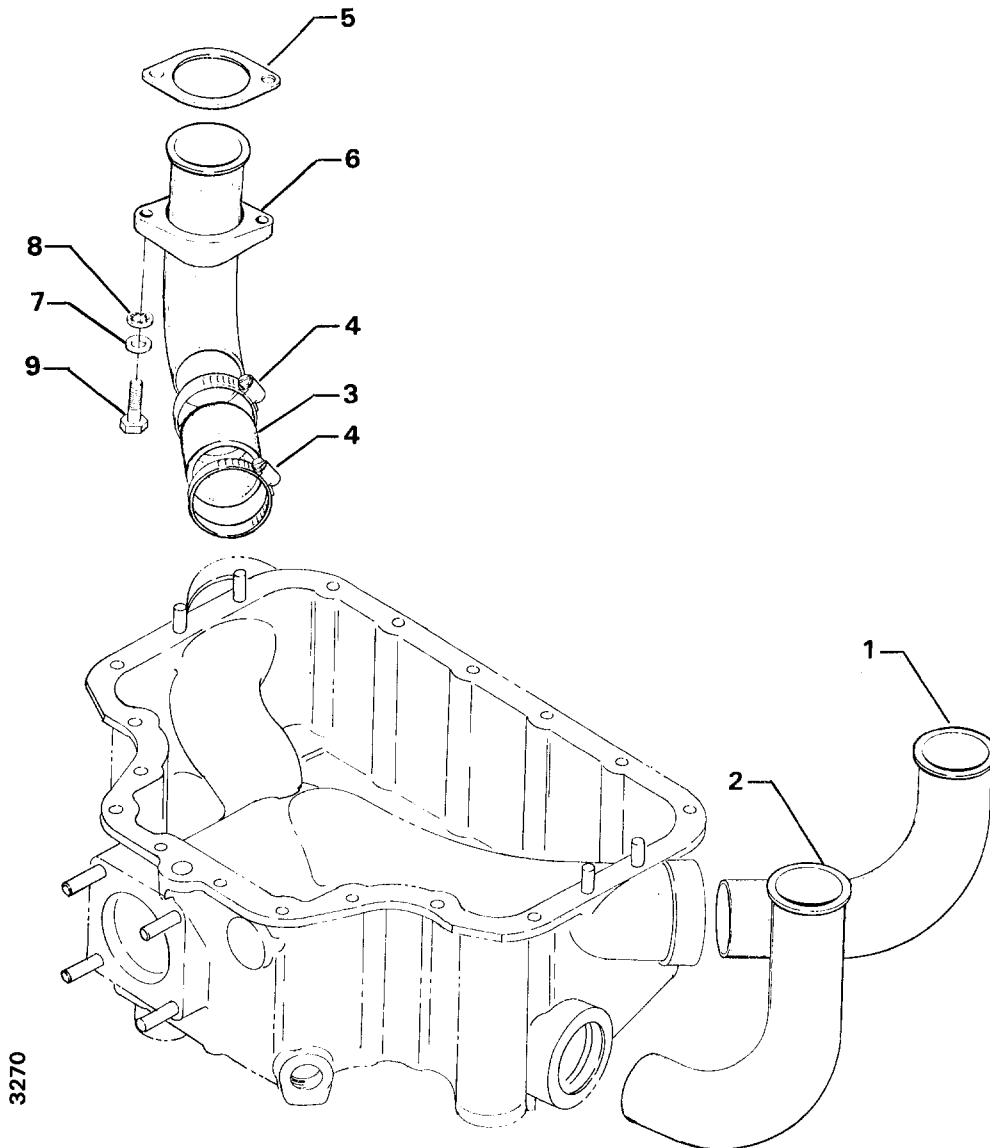


Figure 24. INTAKE PIPES AND ATTACHING PARTS

Williamsport Plant

OIL SUMP AND INDUCTION SYSTEM
CARBURETOR ASSEMBLY

FIG. REF. 25	PART NUMBER	DESCRIPTION	QUANTITY PER ASSEMBLY
1	77154	GASKET, Carburetor	1
2	LW-15957	CARBURETOR, Marvel Schebler HA-6 (10-5219)	1
3	STD-35	WASHER, 5/16 plain	4
4	STD-1410	NUT, 5/16-18 plain	4
5	STD-1763	LOCKNUT, 5/16 palnut	4
6	72377	ELBOW, 3/8 tubing, adjustable 90° (inlet)	1
7	MS29512-06	"O" RING	1

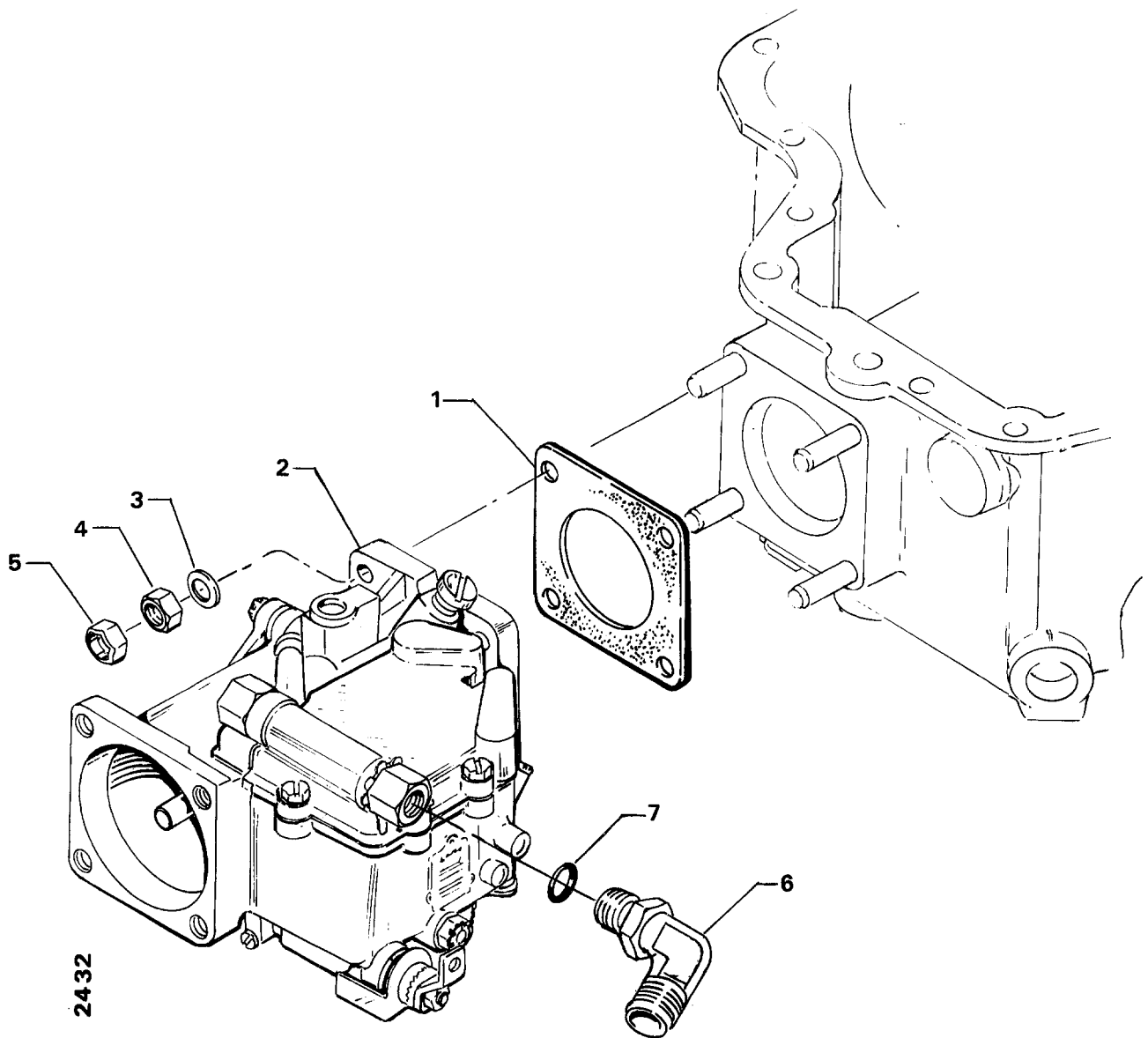


Figure 25. CARBURETOR ASSEMBLY

Williamsport Plant

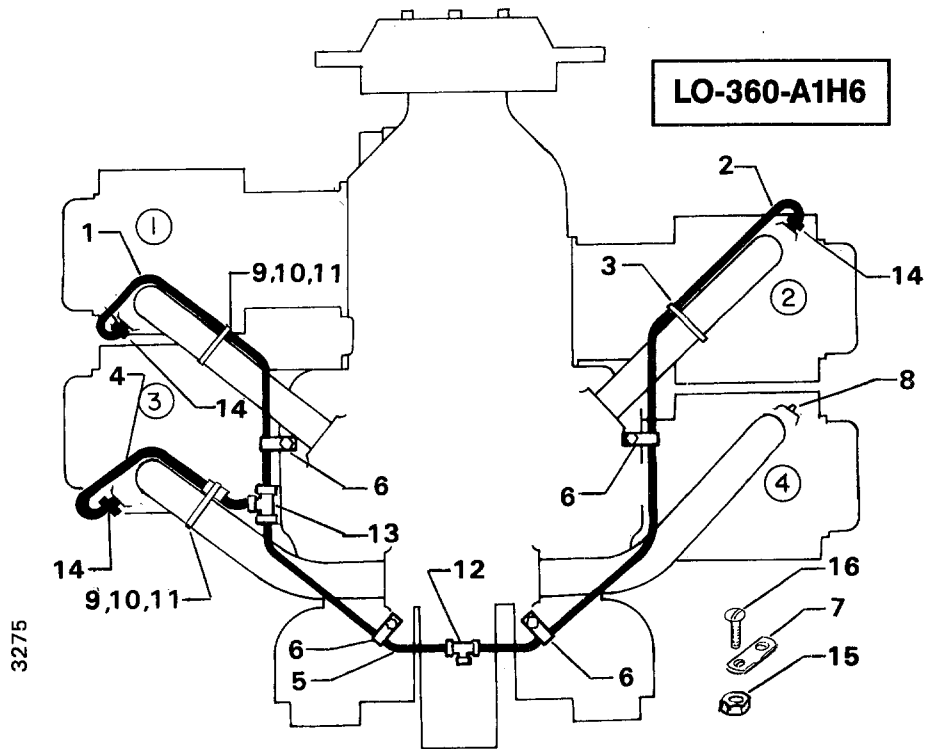
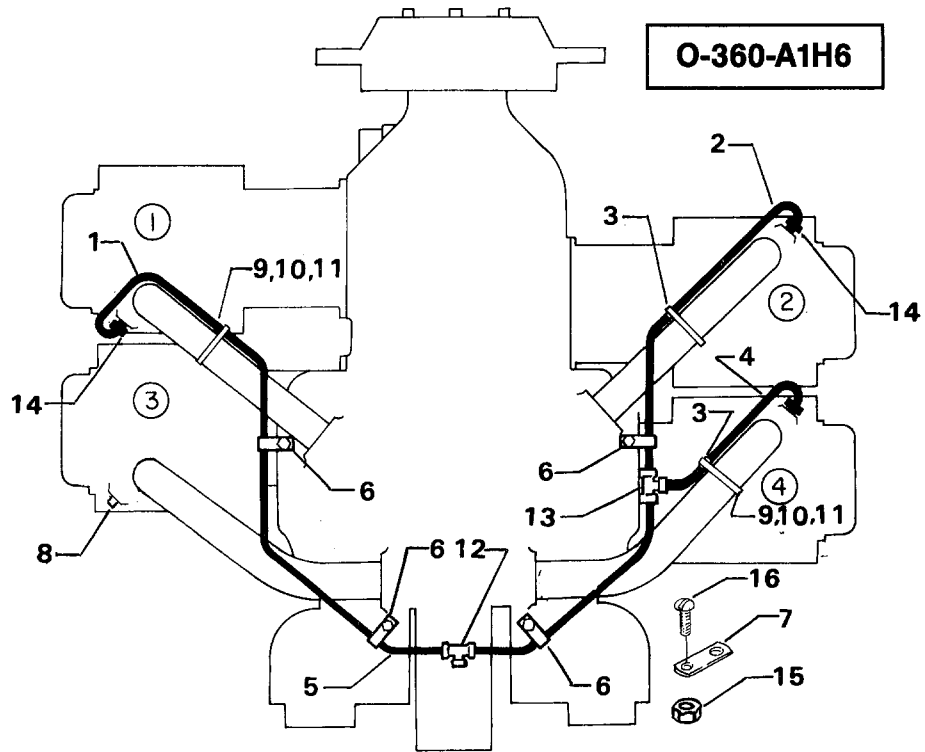
OIL SUMP AND INDUCTION SYSTEM
PRIMING SYSTEM

FIG. REF. 26	PART NUMBER	DESCRIPTION	QUANTITY PER ASSEMBLY
1	LW-12098-0-280 *	TUBE ASSY., Primer, cyl. no. 1	1
	LW-12098-0-170 * *	TUBE ASSY., Primer, cyl. no. 1	1
2	LW-12098-0-170 *	TUBE ASSY., Primer, cyl. no. 2	1
	LW-12098-0-320 * *	TUBE ASSY., Primer, cyl. no. 2	1
3	LW-12598	SLEEVE, Priming line	3
4	LW-12098-0-120 *	TUBE ASSY., Primer, cyl. no. 4	1
	LW-12098-0-120 * *	TUBE ASSY., Primer, cyl. no. 3	1
5	LW-12098-0-140 *	TUBE ASSY., Primer, intermediate	1
	LW-12098-0-100 * *	TUBE ASSY., Primer, intermediate	1
6	LW-16266-25-13	CLAMP	4
7	LW-14432	BRACKET, Support clamp	1
8	1102	PLUG, 1/8 N.P.T., Allen (assemble in cyl. head)	1
9	LW-18959-175-25	CLAMP, 1-3/4 I.D. with 1/4 dia. offset	3
10	STD-553	SCREW, No. 6-32 x 1/2 long, round head	3
11	AN365-632A	NUT, No. 6-32 self-locking	3
12	LW-18071	TEE, Union, 1/8 tube	1
13	STD-853	TEE, Union, 1/8 tube	1
14	74225	NIPPLE ASSY., Primer	3
15	STD-670	NUT, No. 10-32	1
16	STD-692	SCREW, No. 10-32	1

* Used on O-360-A1H6 engines.

* * Used on LO-360-A1H6 engines.

Williamsport Plant



3275

Figure 26. PRIMING SYSTEM

SECTION

7

**SERVICE KIT
SECTION**

Williamsport Plant

SERVICE KIT SECTION
SEAL AND GASKET SET

Part No.	Part Name	Qty.
75439-1	SEAL AND GASKET SET	1
AN901-8A	GASKET	1
06E19769-1.00	GASKET, Annular	1
STD-2217	SEAL, Oil	1
STD-213	SEAL, Oil (fuel pump drive)	1
06E19769-0.63	GASKET, Annular	2
06E19769-1.25	GASKET, Annular	1
1691-C	GASKET, Fuel pump pad	1
8313	GASKET, Vacuum pump	1
60096	GASKET, Fuel pump	1
LW-18639	LOCKPLATE, Crankshaft gear	1
LW-14260	SEAL, Tachometer	1
61173	GASKET, Oil press. hsg.	1
61183	GASKET, Accessory adapter	1
62224	GASKET, Magneto adapter	3
LW-18661	SEAL, Shroud tube	8
LW-19296	GASKET, Exhaust flange	4
66224	GASKET, Carburetor	2
68315	GASKET, Accessory drive adapter	1
LW-13353	GASKET, Oil sump	1
69164	GASKET, Fuel pump adapter	1
69345	SPACER	4
69551	GASKET, Accessory pad cover	1
70310	SEAL, Shroud tube	8
71481	RING, Oil seal	4
71973	GASKET, Intake flange	4
72053	GASKET, Governor drive pad	2
72059	GASKET	1
72075	SEAL, Oil	6
72078	LOCKPLATE, Cam gear	2
72091	RING, Oil seal	2
73383	LOCKPLATE	2
73817	LOCKPLATE, Crankshaft idler gear shaft	2
73818	GASKET, Accessory housing	1
74065	RING, Oil level gage seal	1
74068	RING, Oil level gage seal	1
75906	GASKET, Rocker box cover	4
76510	GASKET	1
76940	SEAL, Crankshaft oil	1
LW-13792	SEAL, Crankshaft oil	1
LW-12272	LOCKPLATE, Shroud tube	4
LW-12681	GASKET, Magneto	2
LW-12795	GASKET	1
LW-14995	SPRING	4
LW-10332	LOCKPLATE	1
70455	GASKET	1
STD-1763	PALNUT	4
72220	GASKET	1
72312	RING, Oil seal	1
77154	GASKET, Carburetor	1

Williamsport Plant

SERVICE KIT SECTION**SEAL AND GASKET SET (Continued)**

Part No.	Part Name	Qty.
75439-1	SEAL AND GASKET SET	1
77611	GASKET, Exhaust flange	4
72829	LOCKPLATE, Injector pump idler	1
73189	GASKET, Carburetor shroud	1

Williamsport Plant

SERVICE KIT SECTION
CYLINDER, PISTON AND RING ASSEMBLY

Part No.	Part Name	Qty.
05K21104	CYLINDER, PISTON AND RING ASSEMBLY	1
LW-12427	CYLINDER AND HEAD ASSEMBLY	1
LW-19001	VALVE, Exhaust	1
73938	VALVE, Intake	1
LW-11800	SPRING, Valve, outer	2
LW-11795	SPRING, Valve, inner	2
LW-10077	SEAT, Valve spring, upper, intake	1
LW-16475	SEAT, Valve spring, upper, exhaust	1
LW-13323	SEAT, Valve spring, lower, int. & exh.	2
60009	KEY, Valve, intake	2
MS-13997-3	KEY, Valve, exhaust	2
MS-13998-3	CAP, Valve stem, exhaust	1
75089	PISTON	1
74241	RING, Piston compression	2
73857	RING, Piston, oil regulating	1
LW-14077	PIN, Piston	1
LW-11775	PLUG, Piston pin	2
60828	PLUG, Piston pin	2
71481	RING, Cylinder base seal	1
LW-18661	SEAL, Shroud tube	2
70310	SEAL, Shroud tube	2
75906	GASKET, Rocker box cover	1
SSP-2272	TAG	1
SSP-2472	TAG	1
SSP-672	TAG	1
72198	PLUG, Piston pin	1

Williamsport Plant

SERVICE KIT SECTION**CRANKCASE ASSY. AND THRU STUD KIT****O-360-A1H6**

Part No.	Part Name	Qty.
LW-18386-S	CRANKCASE ASSY. AND THRU STUD KIT	1
LW-18386-1*	CRANKCASE ASSEMBLY	1
76220	THRU STUD	4
74887	SPACER	2
31C-14	STUD (AN Governor)	4
STD-2090	NUT	2
AN565-B-1032-H4	SET SCREW	1
AN565-B-1032-H5	SET SCREW	1
SSP-1769	TAG	1
SSP-1576	TAG	1
SSP-582	TAG	1
31C-16	STUD (Woodward Governor)	4

* See Fig. 1, Page 1-1 for component parts.

Williamsport Plant

SERVICE KIT SECTION
CRANKCASE ASSY. AND THRU STUD KIT
LO-360-A1H6

Part No.	Part Name	Qty.
LW-18414-S	CRANKCASE ASSY. AND THRU STUD KIT	1
LW-18414-1*	CRANKCASE ASSEMBLY	1
76220	THRU STUD	4
74887	SPACER	2
31C-16	STUD (Woodward Governor)	4
AN565-B-1032-H4	SET SCREW	1
AN565-B-1032-H5	SET SCREW	1
SSP-1769	TAG	1
SSP-1576	TAG	1
SSP-582	TAG	1

* See Fig. 1, Page 1-1 for component parts.

SECTION

8

NUMERICAL INDEX

Williamsport Plant

NUMERICAL INDEX

PART NO.	PART NAME	PAGE NO.	PART NO.	PART NAME	PAGE NO.
AN365-632A	Nut	6-5	LW-13792	Seal	1-5
AN565B1032H5	Set Screw	1-9	LW-13793	Stud	1-1
AN6-16	Bolt	5-3	LW-13796	Shaft	1-10
AN6-17	Bolt	5-3	LW-13884	Bearing	1-5
AN6-34A	Bolt	1-11	LW-13896	Plug	1-9
AN960-616L	Washer	1-11	LW-13923	Bushing	3-1
LW-25-0.94	Bolt	2-3	LW-14021	Shaft	1-9
LW-25-0.94	Bolt	6-1	LW-14077	Pin	3-1
LW-25-1.13	Bolt	1-11	LW-14215	Starter	5-2
LW-25-1.13	Bolt	6-1	LW-14260	Seal	2-3
LW-25-1.25	Bolt	6-3	LW-14318	Alternator	5-1
LW-25-1.50	Bolt	1-11	LW-14432	Bracket	6-5
LW-25-1.50	Bolt	2-3	LW-14820	Ring	1-7
LW-25-1.75	Bolt	1-11	LW-14995	Spring	3-5
LW-25S1.50	Bolt	1-11	LW-15403	Washer	5-1
LW-25S2.75	Bolt	2-3	LW-15571	Starter	5-2
LW-31-0.94	Bolt	5-3	LW-15592-5-05	Clamp	3-7
LW-31-1.16	Bolt	5-2	LW-15592-8-28	Clamp	6-3
LW-31H0.75	Bolt	5-3	LW-15957	Carburetor	6-4
LW-10077	Seat	3-5	LW-16048	Bearing	3-1
LW-10551	Gear	1-7	LW-16266-25-13	Clamp	6-5
LW-10977	Roller	1-7	LW-16335	Fuel Pump	2-5
LW-11485	Tube	3-5	LW-16475	Seat	3-5
LW-11713	Spring	1-5	LW-16711	Bearing	1-5
LW-11750	Connecting Rod	3-1	LW-16783-15	Gage Assy.	1-3
LW-11775	Plug	3-1	LW-16783-16	Gage Assy.	1-3
LW-11795	Spring	3-5	LW-17254	Crankshaft Assy.	1-7
LW-11800	Spring	3-5	LW-17264	Crankshaft Assy.	1-7
LW-11839	Body	2-3	LW-17281	Crankshaft Assy.	1-7
LW-11997	Seal	1-5	LW-17291	Crankshaft Assy.	1-7
LW-12098-0-100	Tube Assy.	6-5	LW-18071	Tee	6-5
LW-12098-0-120	Tube Assy.	6-5	LW-18085	Spring	1-5
LW-12098-0-140	Tube Assy.	6-5	LW-18386-1	Crankcase Assy.	1-1
LW-12098-0-170	Tube Assy.	6-5	LW-18414-1	Crankcase Assy.	1-1
LW-12098-0-280	Tube Assy.	6-5	LW-18506	Support Assy.	1-7
LW-12098-0-320	Seal	6-5	LW-18639	Lockplate	1-7
LW-12186	Nut	3-1	LW-18661	Seal	3-5
LW-12272	Lockplate	3-5	LW-18667	Pin	1-4
LW-12427	Cylinder Assy.	3-2	LW-18843	Camshaft Assy.	1-4
LW-12545	Plug	6-1	LW-18845	Camshaft Assy.	1-4
LW-12598	Sleeve	6-5	LW-18959-175-25	Clamp	6-5
LW-12681	Gasket	4-1	LW-19001	Valve	3-5
LW-12706	Adapter	4-1	LW-19227	Counterweight	1-7
LW-12795	Gasket	2-7	LW-19298	Ring	3-2
LW-12892	Thrust Button	3-3	LW-19299	Ring	3-2
LW-13323	Seat	3-5	MS13997-3	Key	3-5
LW-13353	Gasket	6-1	MS13998-3	Cap	3-5
LW-13521	Bearing	3-1	MS16625-1081	Ring	1-4
LW-13522	Bearing	3-1	MS20823-6D	Elbow	3-2
LW-13790	Shaft	3-3	STD-8	Washer	1-11

Williamsport Plant

NUMERICAL INDEX (Cont.)

PART NO.	PART NAME	PAGE NO.	PART NO.	PART NAME	PAGE NO.
STD-8	Washer	2-3	STD-1409	Nut	2-3
STD-8	Washer	2-6	STD-1410	Nut	1-9
STD-8	Washer	2-7	STD-1410	Nut	2-5
STD-8	Washer	6-1	STD-1410	Nut	3-3
STD-8	Washer	6-3	STD-1410	Nut	4-1
STD-19	Dowel	1-9	STD-1410	Nut	5-2
STD-33	Washer	1-11	STD-1410	Nut	6-4
STD-33	Washer	2-5	STD-1411	Nut	1-11
STD-35	Washer	1-9	STD-1411	Nut	2-6
STD-35	Washer	2-3	STD-1411	Nut	2-7
STD-35	Washer	2-5	STD-1411	Nut	3-5
STD-35	Washer	3-3	STD-1411	Nut	6-1
STD-35	Washer	5-2	STD-1420	Nut	2-3
STD-35	Washer	5-3	STD-1623	Insert	1-1
STD-35	Washer	6-4	STD-1727	Washer	4-1
STD-160	Washer	1-11	STD-1727	Washer	5-3
STD-160	Washer	2-3	STD-1763	Locknut	6-4
STD-160	Washer	2-6	STD-1774	Pin	2-6
STD-160	Washer	2-7	STD-1821	Hose	3-7
STD-160	Washer	6-1	STD-1856	Screw	2-7
STD-160	Washer	6-3	STD-1872	Insert	3-2
STD-475	Washer	1-9	STD-1882	Screw	2-5
STD-475	Washer	2-5	STD-1925	Screw	3-3
STD-475	Washer	3-3	STD-2090	Nut	3-3
STD-475	Washer	4-1	STD-2167	Screw	1-10
STD-475	Washer	5-2	STD-2168	Nut	1-10
STD-514	Dowel	1-1	STD-2213	Screw	1-7
STD-551	Plug	6-1	STD-2217	Seal	2-6
STD-553	Screw	6-5	25C-9	Stud	3-2
STD-557	Dowel	1-1	25C-10	Stud	2-7
STD-596	Nut	1-11	25C-22	Stud	2-1
STD-670	Nut	6-5	31C-12	Stud	1-1
STD-678	Washer	1-11	31C-12	Stud	2-1
STD-684	Nipple	3-7	31C-12	Stud	3-2
STD-690	Washer	5-3	31C-13	Stud	1-1
STD-692	Screw	6-5	31C-14	Stud	6-1
STD-713	Pin	5-3	31C-16	Stud	1-1
STD-761	Pin	4-1	31C-19	Stud	2-1
STD-783	Plug	2-1	31CD-17	Stud	2-1
STD-784	Plug	2-1	31CD-22	Stud	2-1
STD-784	Plug	2-7	38-13	Stud	1-1
STD-798	Dowel	1-9	38-22	Stud	1-1
STD-853	Tee	6-5	38D-17	Stud	1-1
STD-872	Nut	1-11	50-15	Stud	1-1
STD-872	Nut	5-3	383-B	Nut	3-3
STD-1065	Dowel	1-7	1028-B	Ball	1-5
STD-1211	Plug	1-7	1102	Plug	1-1
STD-1227	Washer	2-3	1102	Plug	2-1
STD-1339	Plug	1-1	1102	Plug	3-2
STD-1409	Nut	1-11	1102	Plug	6-1

Williamsport Plant

NUMERICAL INDEX (Cont.)

PART NO.	PART NAME	PAGE NO.	PART NO.	PART NAME	PAGE NO.
1102	Plug	6-5	72075	Seal	1-5
1182-B3	Spark Plug	4-1	72091	Ring	1-5
8313	Gasket	2-6	72158	Bushing	1-1
60009	Key	3-5	72377	Elbow	6-4
60096	Gasket	2-5	72378	Cover	1-9
60430	Cover	2-6	72566	Gear	1-7
60803	Strap	1-11	72797	Roller	1-7
61084	Spring	1-5	72877	Body	1-5
61098	Adapter Assy.	2-6	72970	Gear Assy.	2-6
61174	Shaft	2-3	73249	Washer	1-9
61183	Gasket	2-6	73250	Washer	1-9
61247	Cover	3-3	73251	Washer	1-9
61400	Stud	6-1	73252	Washer	1-9
61510	Plug	1-7	73346	Flange	6-3
61544	Plunger	1-10	73383	Lockplate	5-3
61665	Gear	4-1	73434	Rod Assy.	3-3
62224	Gasket	4-1	73435	Rod Assy.	3-3
65007	Retainer	1-1	73436	Rod Assy.	3-3
66610	Bushing	3-2	73437	Rod Assy.	3-3
66796	Insert	3-2	73810	Bushing	1-7
68668	Spring	1-5	73818	Gasket	2-1
68759	Tube Assy.	3-7	73857	Ring	3-1
68760	Tube Assy.	3-7	73938	Valve	3-5
68761	Tube Assy.	3-7	74068	Ring	1-3
69106	Cover	2-5	74225	Nipple Assy.	6-5
69551	Gasket	2-5	74241	Ring	3-1
69602	Connection	6-1	74637	Bushing	3-3
69603	Hose	6-3	74887	Spacer	3-3
69675	Connector	2-7	74977	Support Assy.	1-7
69796	Dowel	1-1	74996	Gear Assy.	1-10
70310	Seal	3-5	75061	Bolt	3-1
70455	Gasket	1-9	75072	Gear Assy.	1-10
70484	Screen	6-1	75089	Piston	3-1
71140	Fitting	2-7	75154	Stud	1-1
71481	Ring	3-3	75339	Baffle Assy.	3-7
71596	Washer	2-6	75736	Tube	1-3
71610	Hook	3-7	75888	Stud	2-1
71611	Retainer	3-7	75906	Gasket	3-3
71712	Pipe	6-3	76118	Spacer	1-4
71713	Pipe	6-3	76119	Shield	2-1
71903	Bushing	1-7	76121	Shaft Assy.	1-4
71907	Washer	1-7	76220	Stud	1-11
71973	Gasket	6-3	76510	Gasket	2-7
72053	Gasket	1-9	76534	Shim	5-3
72057	Seat	3-2	76734	Zip Strap	4-1
72058	Seat	3-2	76943	Guide	3-2
72059	Gasket	1-3	76961	Clamp	4-1
72060	Bushing	1-7	77154	Gasket	6-4
72061	Bushing	1-7	77159	Sump Assy.	6-1
72062	Bushing	1-7	77160	Guide	3-2

Williamsport Plant

NUMERICAL INDEX (Cont.)

PART NO.	PART NAME	PAGE NO.	PART NO.	PART NAME	PAGE NO.
77309	Bushing	1-10	07F21099	Strut	5-3
77412	Housing Assy.	2-1	13S19646	Gear	1-7
77467	Spring	1-5	17F19353	Rocker Assy.	3-3
77808	Valve Assy.	1-5	18A19441	Bearing	1-5
77852	Base Assy.	2-7	21A21081	Housing Assy.	2-1
77872	Bushing	1-9	32B19561	Alternator Assy.	5-1
77874	Gear Assy.	1-9	36B19475	Pulley	5-1
77875	Gear	1-9	37A19773-380	Belt	5-1
78290	Plunger Assy.	3-5	53E19600	Valve Assy.	2-7
78524	Socket	3-5	54D19626	Oil Filter	2-7
78531	Body	2-3	66HC25RFNN	Magneto	4-1
01P19762-1	Mag-Bag	4-3	66HC25SFNN	Magneto	4-1
05K19423-S	Kit	2-3	66HP-ORANN	Magneto	4-1
06E19769-0.63	Gasket	2-7	66HP-OSANN	Magneto	4-1
06E19769-1.00	Gasket	6-1	67P20414	Harness Assy.	4-1
06E19769-1.25	Gasket	1-5	67P20415	Harness Assy.	4-1
07A21097	Bracket	5-3	68C19622	Gear	4-1
07F21098	Link	5-3			