

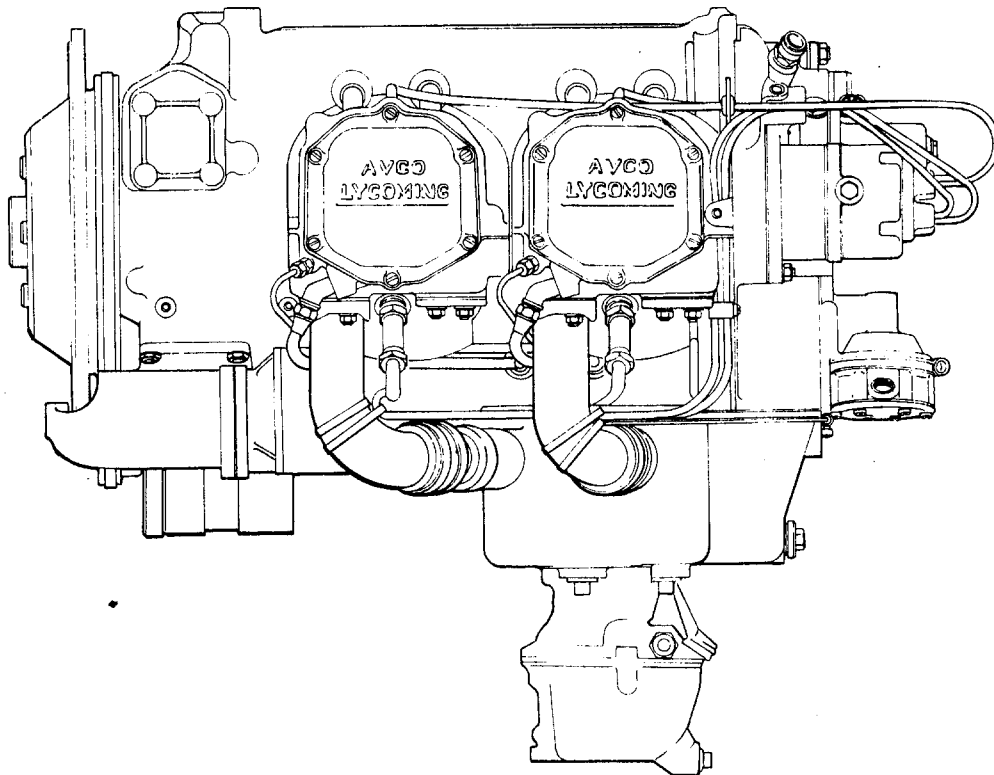
# PARTS CATALOG

## PC-306-4

### AVCO LYCOMING

### O-360-C1G

## AIRCRAFT ENGINES



PRICE: \$5.00

FEBRUARY 1987

**Avco Lycoming** **TEXTRON**

Williamsport Division  
Avco Lycoming/Subsidiary of Textron Inc.

652 Oliver Street  
Williamsport, PA 17701  
717/323-6181

# TECHNICAL PUBLICATION REVISION

REVISION No.	PUBLICATION	PUBLICATION No.	PUBLICATION DATE
PC-306-4A	O-360-C1G PARTS CATALOG	PC-306-4	February, 1987
The page(s) furnished herewith are intended to replace the corresponding page(s) of the publication indicated above.			
Previous revisions to this publication		This revision consists of: -	
None		March, 1994 6-5, 6-6	

## INTRODUCTION

This illustrated parts catalog contains a complete parts listing for the Avco Lycoming O-360-C1G model aircraft engines.

Major assembly and sub-assembly parts of the engines are listed in the Group Assembly sections in the general sequence of engine build up.

A Service Kits section and Oversize and Undersize Parts List are included to aid in ordering parts as necessary during overhaul.

The Numerical Index is provided for convenience in finding parts when only the part number is known.

Parts coverage of Vendor Accessories used on Avco Lycoming engines may be found in the appropriate Vendor's Parts Catalog. A list of these publications appear in the latest edition of Service Letter No. L114.

### NOTE

The illustrations, pictures and drawings shown in this publication are typical of the subject matter they portray.

*This catalog, when used in conjunction with the appropriate overhaul manual, shall be used for parts identification only. Under no circumstances shall this catalog be used as an assembly or installation document.*

Any reference in this document to a suppliers/parts manufacturers' product, by name, trademark, part number or other description is solely for the purposes of identification and does not indicate or infer that Avco Lycoming accepts responsibility for quality control and/or airworthiness of parts which do not pass through the Avco Lycoming quality control system.

### SERVICE BULLETINS, INSTRUCTIONS AND LETTERS

Although the information contained in this parts catalog is up-to-date at time of publication, users are urged to keep abreast of later information through all Avco Lycoming distributors or from the factory by subscription. Consult the latest edition of Service Letter No. L114 for subscription information.

### HOW TO ORDER PARTS

In ordering parts for your engine, observe the following instructions which will expedite shipment of correct parts required without delay.

- a. Always specify the model and serial number of your engine.
- b. Always specify Part Number, Nomenclature and quantity required.

**TABLE OF CONTENTS**

SECTION	PAGE
Introduction .....	i
Table of Contents .....	ii
Oversize and Undersize Parts .....	iii
<b>1. CRANKCASE, CRANKSHAFT AND CAMSHAFT GROUP</b>	
Crankcase Assembly .....	1-1
Oil Level Gage Assembly .....	1-3
Camshaft Assembly .....	1-4
Crankcase Related Parts .....	1-5
Crankshaft Assembly and Related Parts .....	1-7
Propeller Governor Drive (Crankcase) .....	1-9
Crankshaft Idler Gears .....	1-10
Crankcase Attaching Parts .....	1-11
<b>2. ACCESSORY HOUSING AND RELATED PARTS</b>	
Accessory Housing Assembly .....	2-1
Oil Pump and Accessory Housing Attaching Parts .....	2-3
Fuel Pump and Propeller Governor Drive Covers .....	2-5
Vacuum Pump Drive and Cover .....	2-7
Oil Pressure Screen and Oil Cooler Bypass Valve .....	2-8
<b>3. CYLINDER, PISTON AND VALVE TRAIN</b>	
Connecting Rods, Pistons and Ring Assemblies .....	3-1
Cylinder Assembly .....	3-2
Cylinder Related Parts .....	3-3
Valve Assembly .....	3-5
Cylinder Head Drain Tubes and Intercylinder Cooling Baffles .....	3-7
<b>4. IGNITION SYSTEM</b>	
Magnetos, Drives, Harnesses and Spark Plugs .....	4-1
<b>5. ELECTRICAL COMPONENTS</b>	
Alternator Assembly and Belt .....	5-1
Starter Motor and Attaching Parts .....	5-2
Alternator Mounting and Attaching Parts .....	5-3
<b>6. OIL SUMP AND INDUCTION SYSTEM</b>	
Oil Sump Assembly and Oil Suction Screen .....	6-1
Intake Pipes and Attaching Parts .....	6-3
Carburetor Assembly .....	6-4
<b>7. SERVICE KIT SECTION</b>	
Seal and Gasket Set .....	7-1
Cylinder, Piston and Ring Assembly .....	7-2
<b>3. NUMERICAL INDEX</b> .....	8-1

Oversize and Undersize Parts Listing

PART NO.	DESCRIPTION	OVERSIZE								UNDERSIZE		
		P02 .002	P05 .005	P10 .010	P15 .015	P20 .020	P30 .030	P40 .040	P50 .050	M03 .003	M06 .006	M10 .010
66610	BUSHING		X	X								
66796	INSERT			X								
69796	DOWEL		X									
72057	SEAT			X		X	X					
72058	SEAT			X		X	X					
72060	BUSHING		X	X	X	X						
72061	BUSHING		X	X	X	X						
72062	BUSHING		X	X	X	X						
73857	RING			X		X						
74241	RING			X								
76943	GUIDE	SEE LATEST EDITION OF SERVICE INSTRUCTION NO. 1256 FOR APPLICATION.										
77160	GUIDE	SEE LATEST EDITION OF SERVICE INSTRUCTION NO. 1256 FOR APPLICATION.										
LW-11997	SEAL								X			
LW-13521	BEARING									X*	X*	X*
LW-13792	SEAL								X			
LW-13884	BEARING				X					X	X	X
LW-16711	BEARING									X	X	X
STD-1065	DOWEL	X	X	X	X							
18A19441	BEARING				X					X	X	X

\* Also available in P-10 oversize.

In addition to the above, studs are available in P01, P02, P03, P05, P07, P10 & P12.

NOTE

When ordering oversize and undersize parts, be sure to specify the required oversize and undersize dimension along with the proper part number. For example, to order bearing LW-13884 in .003 undersize, order part number LW-13884-M3. Oversize code letter is "P" while undersize code letter is "M". These letters are then followed by the number designating the size in thousandths of an inch.

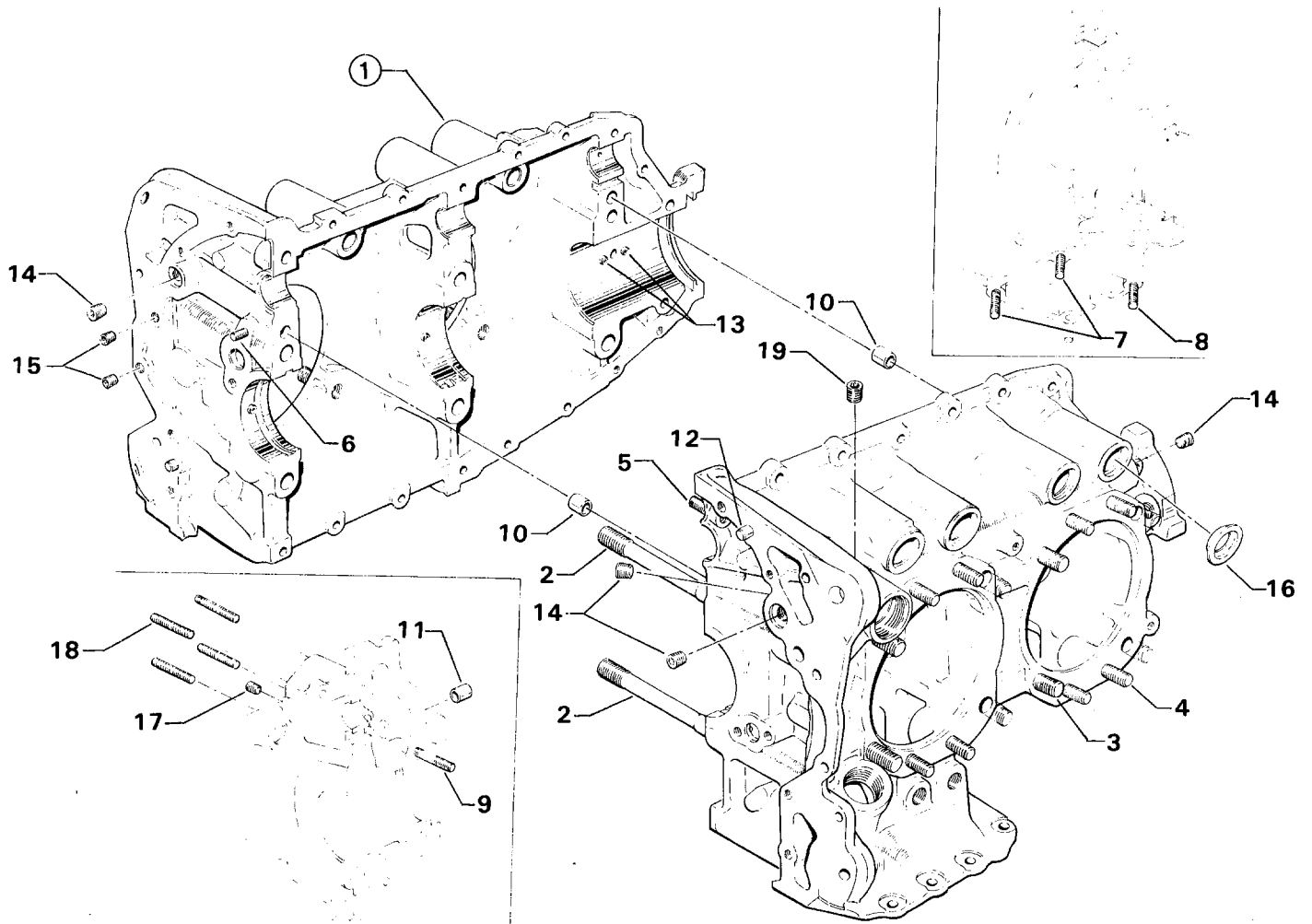
# **SECTION**

# **1**

**CRANKCASE,  
CRANKSHAFT AND  
CAMSHAFT GROUP**

**CRANKCASE, CRANKSHAFT AND CAMSHAFT GROUP**  
CRANKCASE ASSEMBLY

FIG. REF. 1	PART NUMBER	DESCRIPTION	QUANTITY PER ASSEMBLY
1	11B19524-1	CRANKCASE ASSEMBLY	1
2	75154	STUD, 1/2-13 x 10-1/32 long	2
3	50-15	STUD, 1/2-20 x 1-7/8 long	8
4	38-13	STUD, 3/8-16 x 1-5/8 long	16
5	38D-17	STUD, 3/8-16 x 2-1/8 long, drilled	1
6	LW-13793	STUD, 5/16-18 x 15/16 long, drive	1
7	31C-12	STUD, 5/16-18 x 1-1/2 long	2
8	31C-13	STUD, 5/16-18 x 1-5/8 long	1
9	38-22	STUD, 3/8-16 x 2-3/4 long	1
10	STD-557	DOWEL, 1/2 dia. x 19/32 long, hollow	2
11	72158	BUSHING, Governor drive idler shaft	1
12	STD-514	DOWEL, 5/16 dia. x 1/2 long	2
13	69796	DOWEL, Crankshaft bearing	2
14	1102	PLUG, 1/8-27 NPT, Allen head	4
15	STD-1623	INSERT, 1/4-20 Heli-Coil x 3/8	2
16	65007	RETAINER, Shroud tube seal	8
17	STD-1339	PLUG, 1/16-27 NPT, Allen head	1
18	31C-14	STUD, 5/16-18 x 1-3/4 long (driven height, .96-1.00)	4
19	1102	PLUG, 1/8-27 NPT, Allen head	1



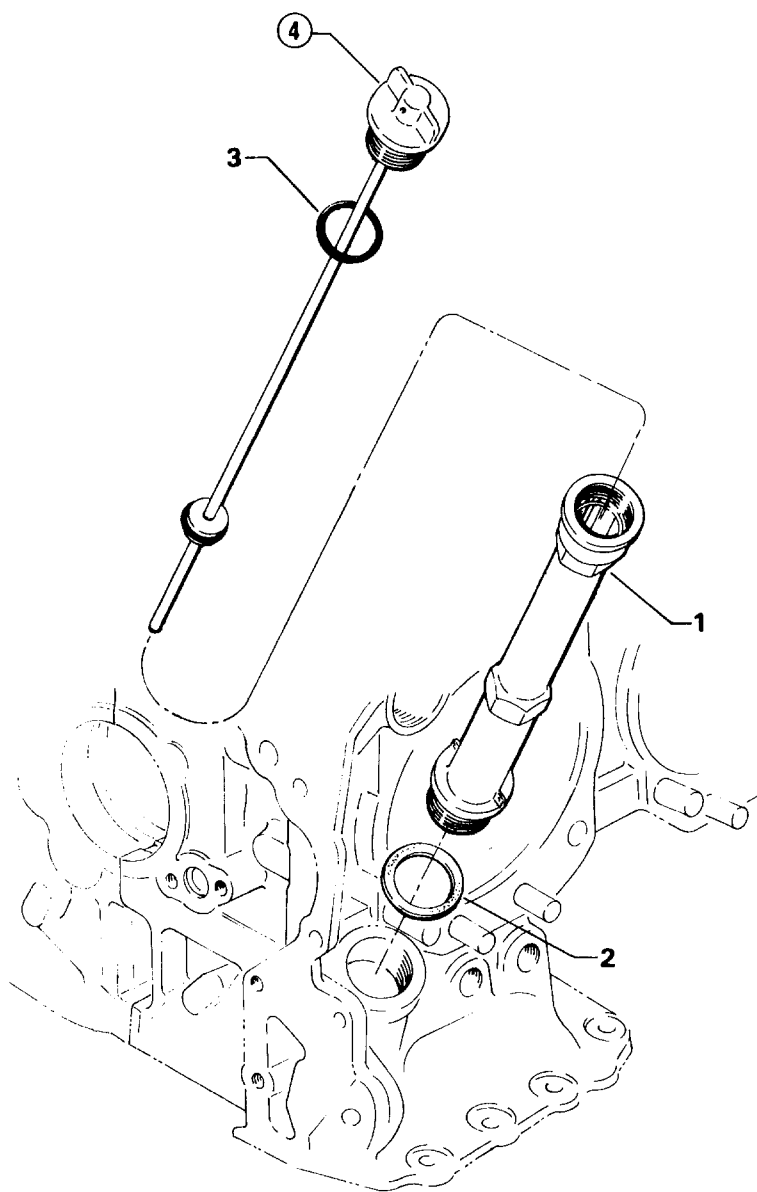
3130

Figure 1. CRANKCASE ASSEMBLY



**CRANKCASE, CRANKSHAFT AND CAMSHAFT GROUP**  
OIL LEVEL GAGE ASSEMBLY

FIG. REF. 2	PART NUMBER	DESCRIPTION	QUANTITY PER ASSEMBLY
1	75736	TUBE, Oil level gage, long	1
2	72059	GASKET, Oil level gage	1
3	74068	RING, Oil level gage seal	1
4	LW-14758	GAGE ASSEMBLY, Oil level	1

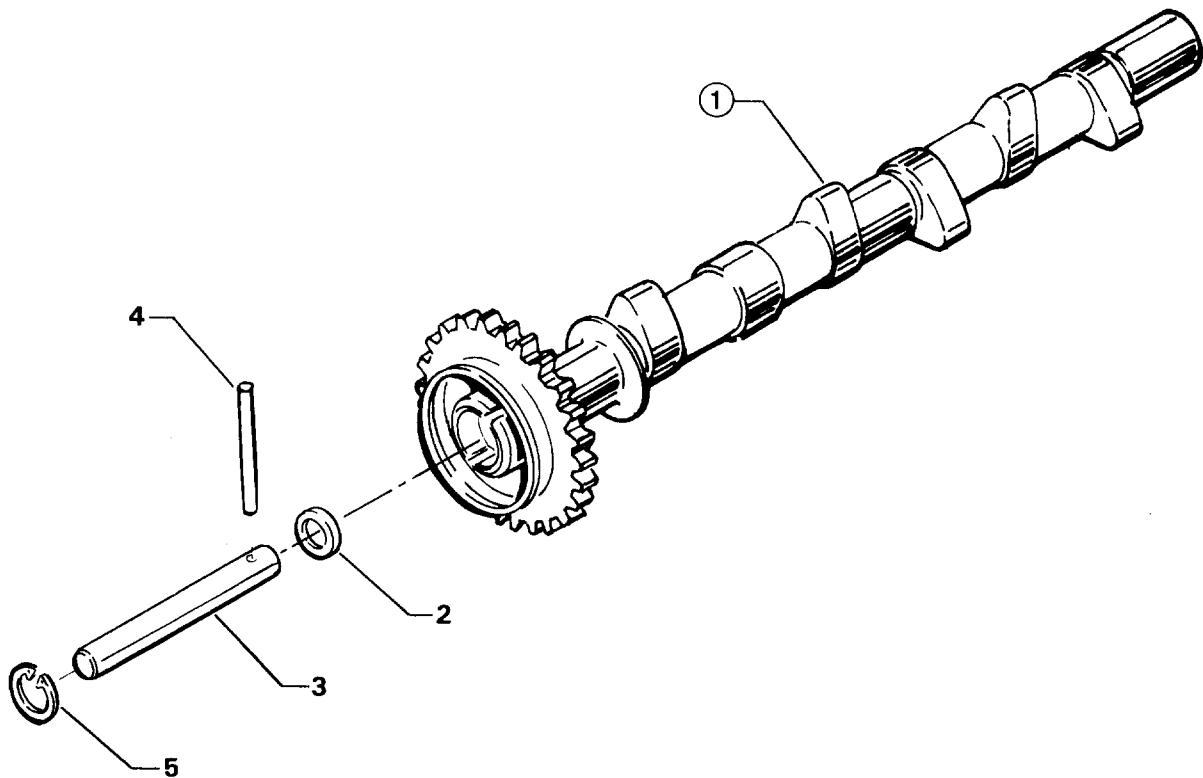


3131

Figure 2. OIL LEVEL GAGE ASSEMBLY

**CRANKCASE, CRANKSHAFT AND CAMSHAFT GROUP  
CAMSHAFT ASSEMBLY**

FIG. REF. 3	PART NUMBER	DESCRIPTION	QUANTITY PER ASSEMBLY
1	LW-18843	CAMSHAFT ASSEMBLY	1
2	76118	SPACER, Tachometer shaft centering	1
3	76121	SHAFT ASSY., Tachometer	1
4	LW-18667	PIN, 3/16 dia. x 2-21/64 long	1
5	MS16625-1081	RING, Internal retaining	1



2669

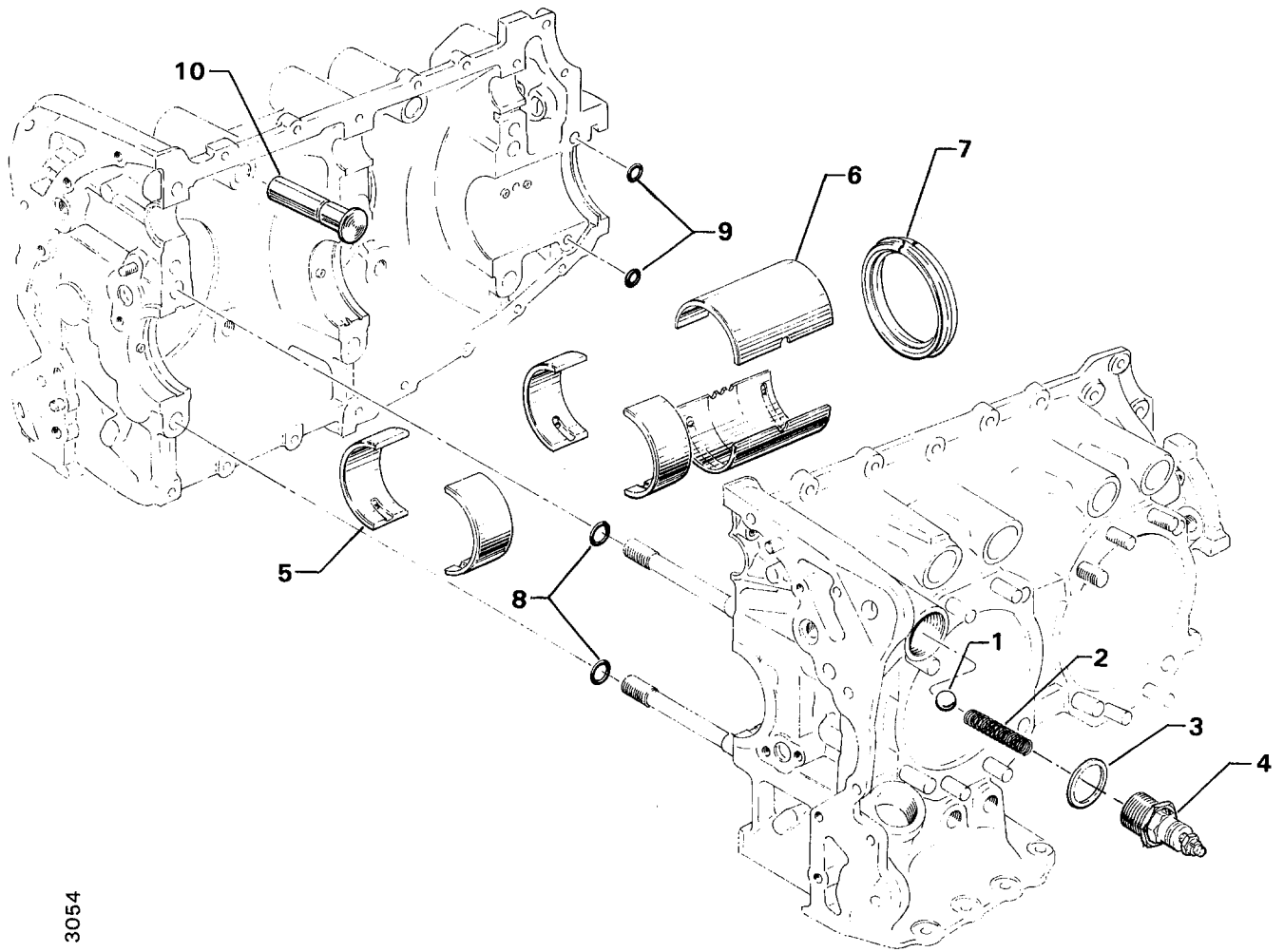
Figure 3. CAMSHAFT ASSEMBLY

**CRANKCASE, CRANKSHAFT AND CAMSHAFT GROUP**  
CRANKCASE RELATED PARTS

<b>FIG. REF. 4</b>	<b>PART NUMBER</b>	<b>DESCRIPTION</b>	<b>QUANTITY PER ASSEMBLY</b>
1	1028-B	BALL, 11/16 dia.	1
2	61084*	SPRING, Oil pressure relief valve	1
	LW-11713*	SPRING, Oil pressure relief valve	1
	68668*	SPRING, Oil pressure relief valve	1
	77467*	SPRING, Oil pressure relief valve	1
	LW-18085*	SPRING, Oil pressure relief valve	1
3	STD-1045	GASKET, 1-1/4 I.D. x 1-1/2 O.D. x 3/32 annular	1
4	77808	VALVE ASSY., Oil pressure relief, adjustable	1
5	LW-16711	BEARING, Crankshaft	4
6	LW-13884	BEARING, Crankshaft, front	2
	18A19441	BEARING, Crankshaft, front (alternate)	2
7	LW-13792**	SEAL, Crankshaft oil, solid	1
	LW-11997**	SEAL, Crankshaft oil, split	1
8	72075	SEAL, Oil, 3/32 section x 15/32 I.D.	2
9	72091	RING, Oil seal, 23/64 I.D. x 3/32 dia. section	2
10	72877	BODY, Hydraulic tappet	8

\* Select spring to give a minimum of three threads exposed on adjusting screw to allow field adjustment. Reference latest revision of SSP-1776, Part 1 for spring identification.

\*\* Refer to latest edition of Service Instruction No. 1324 for installation.



3054

Figure 4. CRANKCASE RELATED PARTS

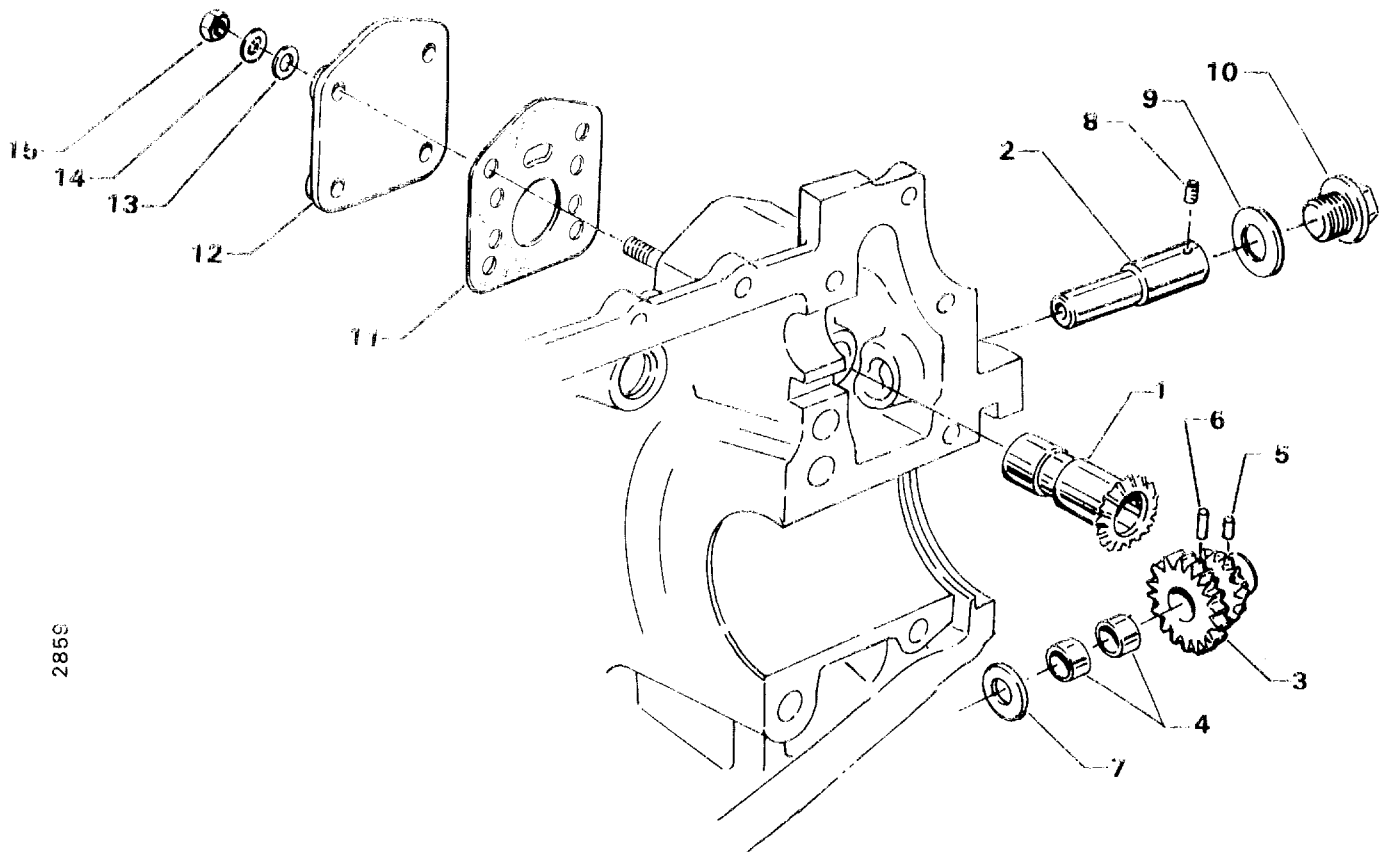
**CRANKCASE, CRANKSHAFT AND CAMSHAFT GROUP**  
**CRANKSHAFT ASSEMBLY AND RELATED PARTS**

<b>FIG. REF. 5</b>	<b>PART NUMBER</b>	<b>DESCRIPTION</b>	<b>QUANTITY PER ASSEMBLY</b>
1	LW-17160	CRANKSHAFT AND PLUG ASSEMBLY	1
2	STD-1211	PLUG, 2.00 dia. expansion	1
3	STD-1065	DOWEL, Stepped, 5/16 and 1/4 dia. x 9/16 long	1
4	61510	PLUG, 1-3/4 O.D.	1
5	72060	BUSHING, Propeller flange, indexing	1
6	72061	BUSHING, Propeller flange, short	1
7	72062	BUSHING, Propeller flange, long	4
8	77579	SUPPORT ASSY., Starter ring gear, 12/14 pitch	1
9	72566	GEAR, Starter ring, 12/14 pitch	1
10	13S19646	GEAR, Crankshaft	1
11	LW-18639	LOCKPLATE, Crankshaft gear	1
12	STD-2213	SCREW, 5/16-24 x 1.00 long	1



**CRANKCASE, CRANKSHAFT AND CAMSHAFT GROUP**  
**PROPELLER GOVERNOR DRIVE (CRANKCASE)**

FIG. REF. 6	PART NUMBER	DESCRIPTION	QUANTITY PER ASSEMBLY
1	77875	GEAR, Propeller governor driven	1
2	LW-14021	SHAFT, Propeller governor idler gear	1
3	77874	GEAR ASSY., Propeller governor idler	1
4	77872	BUSHING, Propeller governor idler gear	2
5	STD-19	DOWEL, 3/32 dia. x 7/32 long	1
6	STD-798	DOWEL, 3/32 dia. x 9/32 long	1
7	73249	WASHER, Thrust	AR
	73250	WASHER, Thrust	AR
	73251	WASHER, Thrust	AR
	75252	WASHER, Thrust	AR
8	AN365B1032H5	SET SCREW, No. 10-32 x 5/16 long	1
9	70455	WASHER, 25/32 I.D. x 1-1/8 O.D. x 1/16 thick	1
10	LW-13896	PLUG, 3/4-16 hex. hd.	1
11	72053	GASKET, Governor	1
12	72378	COVER, Governor drive	1
13	STD-35	WASHER, 5/16 plain	4
14	STD-475	WASHER, 5/16 lock, internal teeth	4
15	STD-1410	NUT, 5/16-18 plain	4

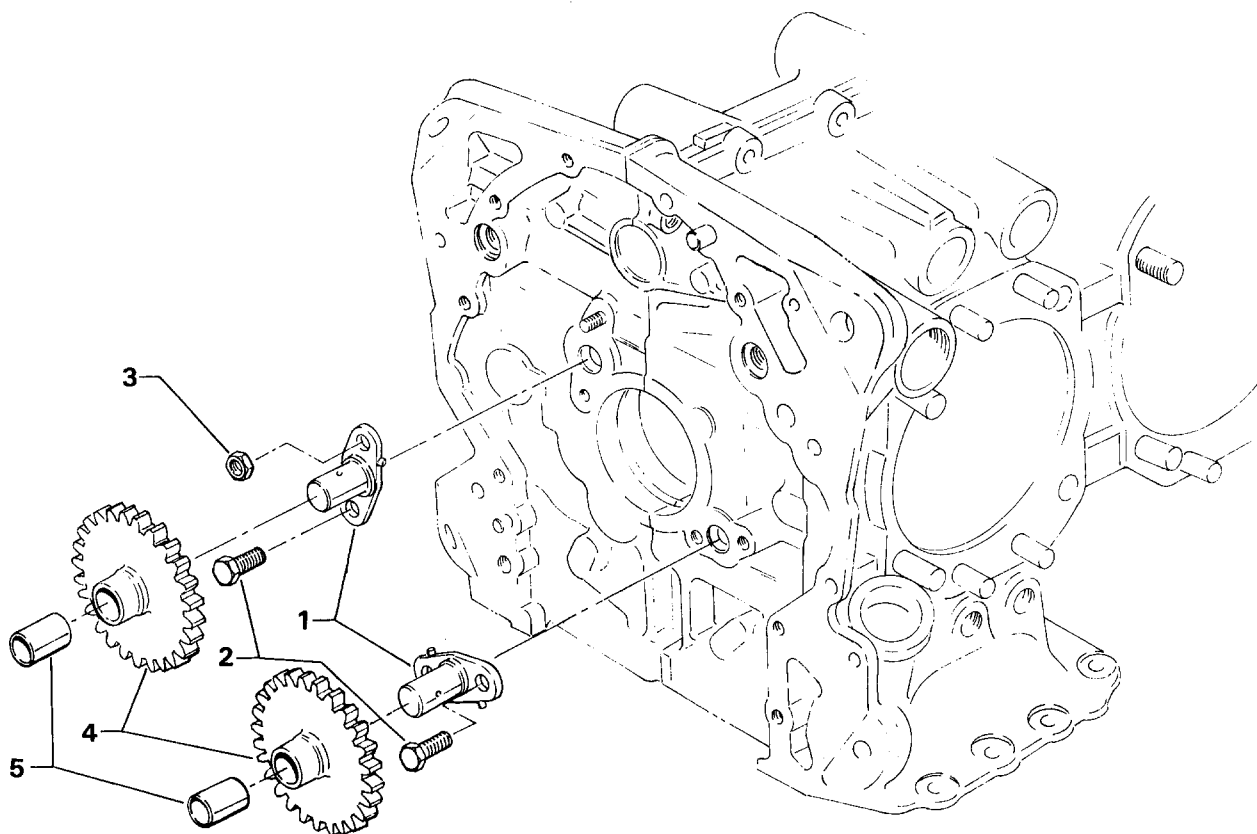


2859

Figure 6. PROPELLER GOVERNOR DRIVE (CRANKCASE)

**CRANKCASE, CRANKSHAFT AND CAMSHAFT GROUP**  
CRANKSHAFT IDLER GEARS

FIG. REF. 7	PART NUMBER	DESCRIPTION	QUANTITY PER ASSEMBLY
1	LW-13796	SHAFT, Crankshaft idler gear	2
2	STD-2167	SCREW, 5/16-18 x 7/8 long, hex. hd. dr.	3
3	STD-2168	NUT, 5/16-18 NC-3 slotted shear	1
4	74996	GEAR ASSY., Crankshaft idler, plain	2
5	77309	BUSHING, Crankshaft idler gear	2



3132

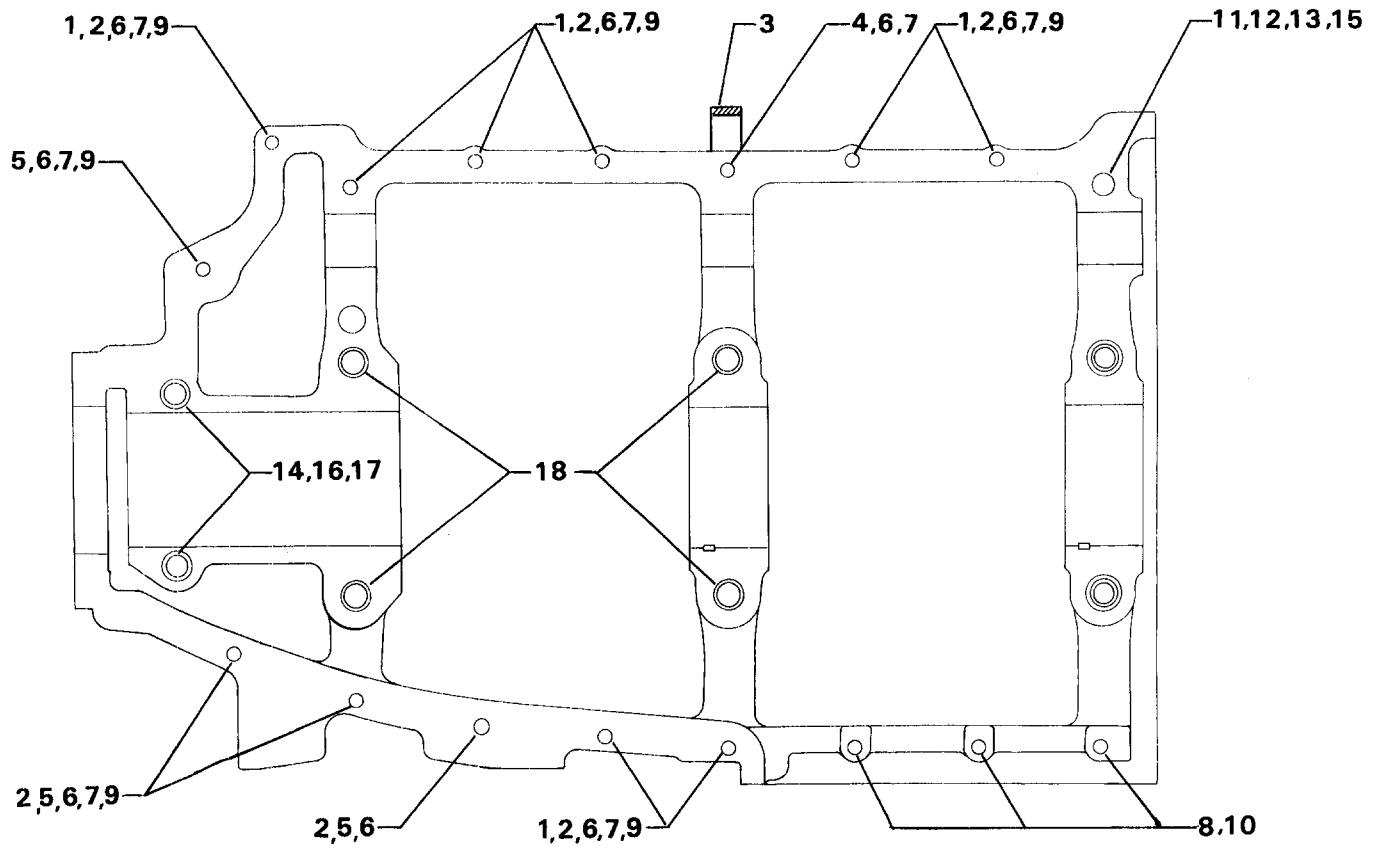
Figure 7. CRANKSHAFT IDLER GEARS



**CRANKCASE, CRANKSHAFT AND CAMSHAFT GROUP**  
**CRANKCASE ATTACHING PARTS**

FIG. REF. 8	PART NUMBER	DESCRIPTION	QUANTITY PER ASSEMBLY
1	LW-25-1.50	BOLT, 1/4-20 x 1-1/2 long, hex. head	8
2	STD-8	WASHER, 1/4 plain	20
3	60803	STRAP, Lifting	1
4	LW-25-1.75	BOLT, 1/4-20 x 1-3/4 long, hex. head	1
5	LW-25-1.13	BOLT, 1/4-20 x 1-1/8 long, hex. head	4
6	STD-160	WASHER, 1/4 lock, internal teeth	12
7	STD-1411	NUT, 1/4-20 plain	9
8	LW-25S1.50	BOLT, 1/4-20 x 1-1/2 long, hex. hd. dr. end	3
9	STD-8	WASHER, 1/4 plain (max. 9)	AR
10	STD-1409	NUT, 1/4-20 slotted shear	3
11	STD-33*	WASHER, 3/8 plain, 1/16 thick	AR
12	AN960-616L*	WASHER, 3/8 plain, 1/32 thick	AR
13	STD-872	NUT, 3/8-24 slotted	1
14	AN6-34A	BOLT, 3/8-24 x 3-37/64 long, hex. head	1
15	STD-33	WASHER, 3/8 plain	2
16	STD-678	WASHER, 3/8 lock, internal teeth	2
17	STD-596	NUT, 3/8-24 plain	2
18	76220	STUD, 1/2-20 x 10-11/16 long	4

\* Use a maximum of 3 total for items no. 11 and no. 12.



3139

Figure 8. CRANKCASE ATTACHING PARTS

**SECTION**

**2**

**ACCESSORY  
HOUSING AND  
RELATED PARTS**

**ACCESSORY HOUSING AND RELATED PARTS**  
**ACCESSORY HOUSING ASSEMBLY**

<b>FIG. REF. 9</b>	<b>PART NUMBER</b>	<b>DESCRIPTION</b>	<b>QUANTITY PER ASSEMBLY</b>
1	73818	GASKET, Accessory housing	1
2	76110	HOUSING ASSY., Accessory	1
3	25C-22	STUD, 1/4-20 x 2-3/4 long	4
4	31C-12	STUD, 5/16-18 x 1-1/2 long	6
5	31C-19	STUD, 5/16-18 x 2-3/8 long	2
6	31CD-17	STUD, 5/16-18 x 2-1/8 long, drilled	3
7	1102	PLUG, 1/8 pipe, Allen	2
8	STD-784	PLUG, 3/8 pipe, Allen	1

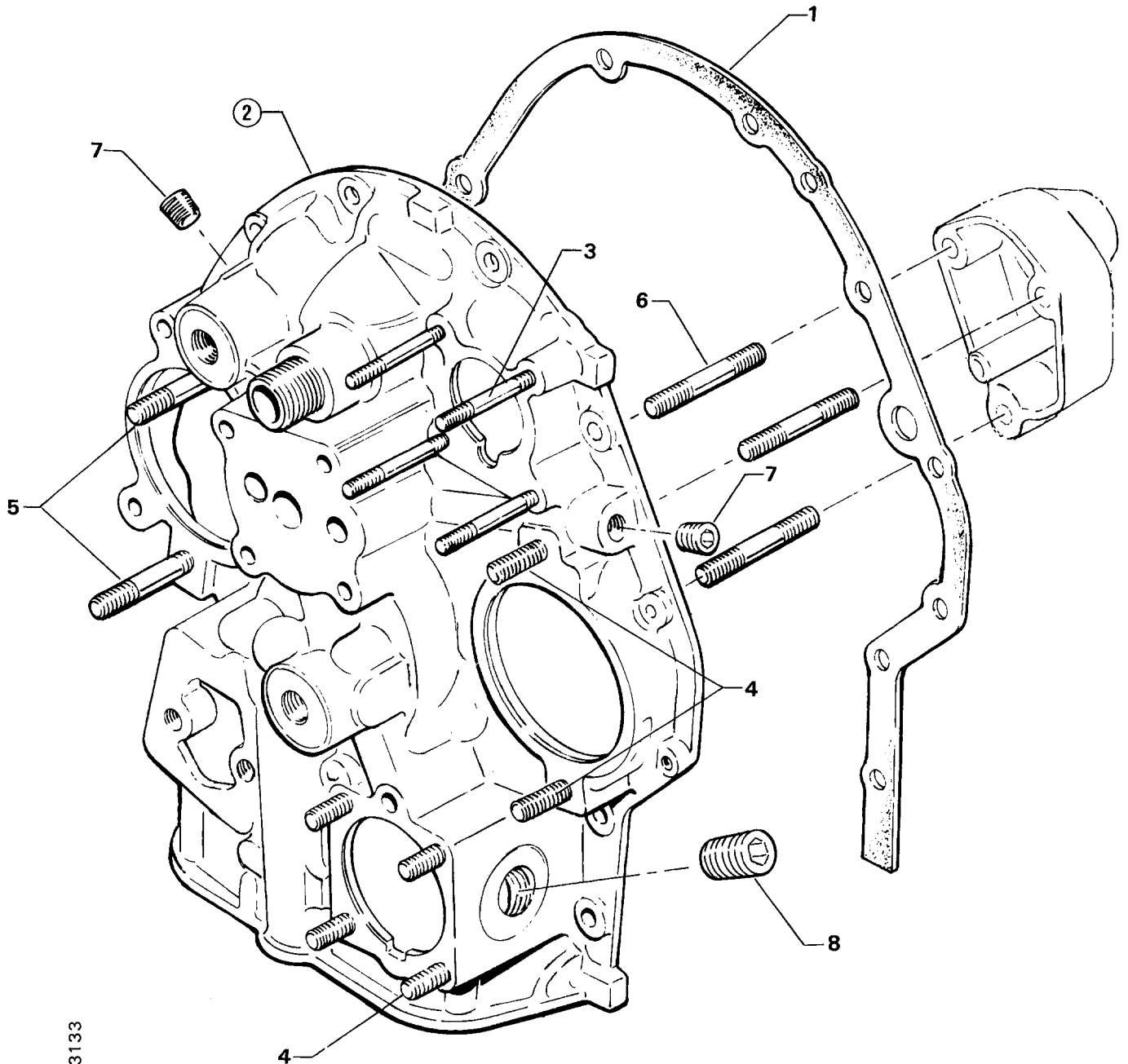


Figure 9. ACCESSORY HOUSING ASSEMBLY

**ACCESSORY HOUSING AND RELATED PARTS**  
 OIL PUMP AND ACCESSORY HOUSING ATTACHING PARTS

<b>FIG. REF. 10</b>	<b>PART NUMBER</b>	<b>DESCRIPTION</b>	<b>QUANTITY PER ASSEMBLY</b>
1	78531	BODY, Oil pump	1
2	05K19423-S	KIT, Oil pump impeller	1
3	61174	SHAFT, Oil pump drive	1
4	STD-35	WASHER, 5/16 plain	3
5	STD-1420	NUT, 5/16-18 slotted	3
6	LW-14260	SEAL, Oil, tachometer drive	1
7	STD-8	WASHER, 1/4 plain	12
8	STD-160	WASHER, 1/4 lock, internal teeth	12
9	LW-25-0.94	BOLT, 1/4-20 x 15/16 long, hex. head	10
10	LW-25-1.50	BOLT, 1/4-20 x 1-1/2 long, hex. head	2

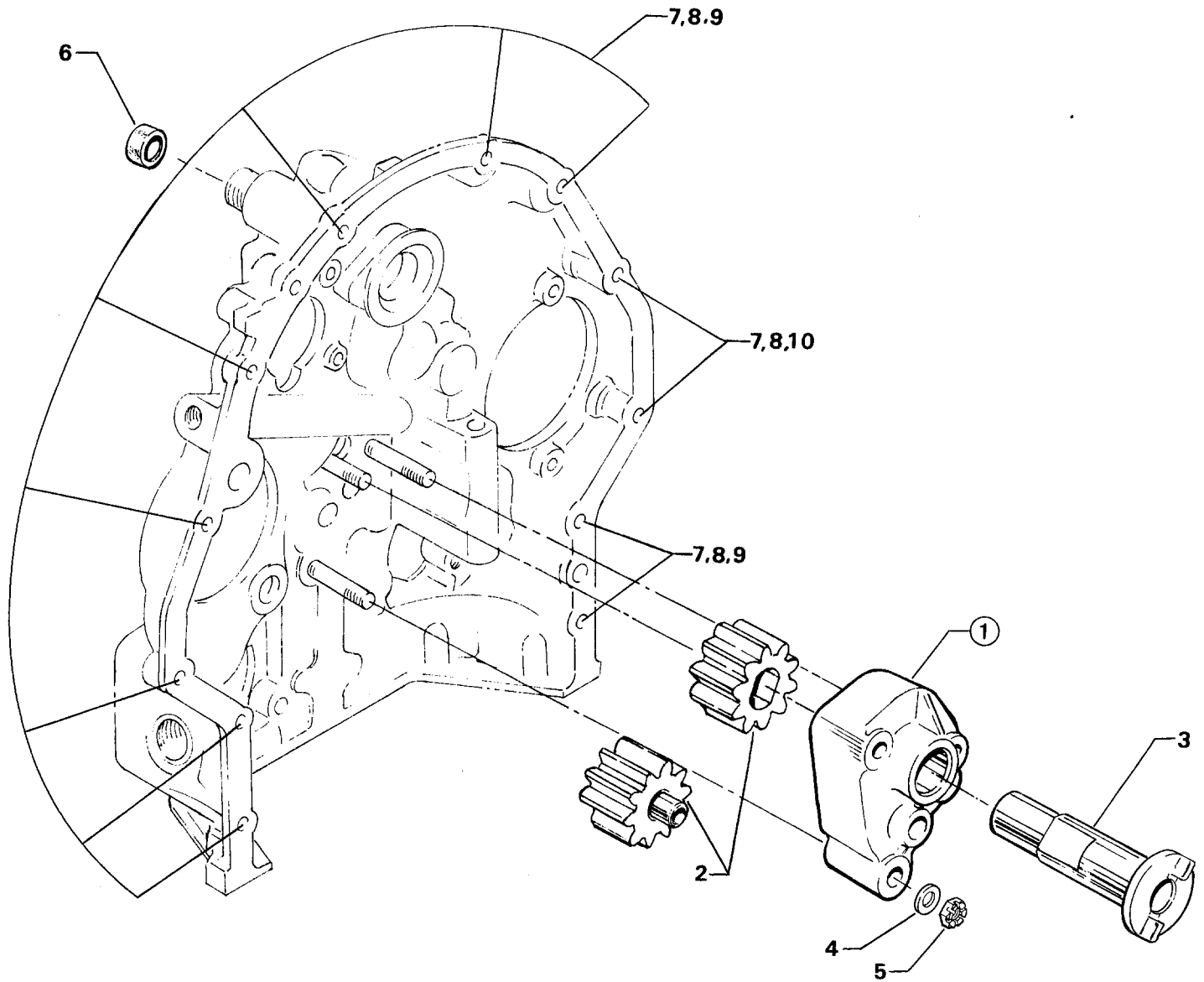
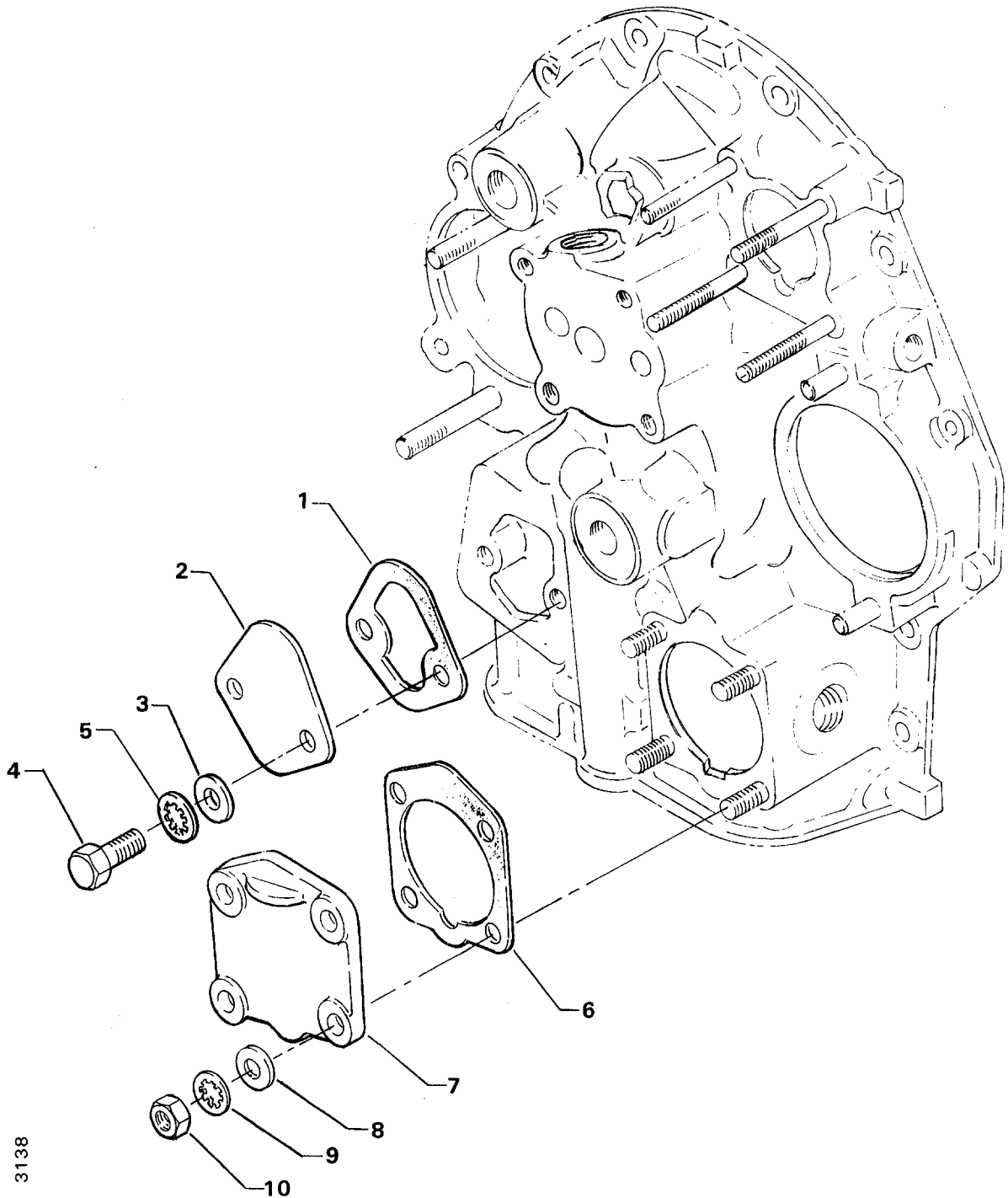


Figure 10. OIL PUMP AND ACCESSORY HOUSING ATTACHING PARTS

**ACCESSORY HOUSING AND RELATED PARTS**  
**FUEL PUMP AND PROP. GOVERNOR DRIVE COVERS**

<b>FIG. REF. 11</b>	<b>PART NUMBER</b>	<b>DESCRIPTION</b>	<b>QUANTITY PER ASSEMBLY</b>
1	60096	GASKET, Fuel pump	1
2	65098	COVER, Fuel pump	1
3	STD-33	WASHER, 3/8 plain	2
4	LW-38-.75	BOLT, 3/8-16 x 3/4 long, hex. head	2
5	STD-678	WASHER, Lock	2
6	69551	GASKET, Accessory drive adapter	1
7	69106	COVER, Governor drive adapter pad	1
8	STD-35	WASHER, 5/16 plain	4
9	STD-475	WASHER, 5/16 lock, internal teeth	4
10	STD-1410	NUT, 5/16-18 plain	4





3138

Figure 11. FUEL PUMP AND PROP. GOVERNOR DRIVE COVERS

**ACCESSORY HOUSING AND RELATED PARTS**  
VACUUM PUMP DRIVE AND COVER

FIG. REF. 12	PART NUMBER	DESCRIPTION	QUANTITY PER ASSEMBLY
1	61183	GASKET, Accessory adapter	1
2	61098	ADAPTER ASSY., Vacuum pump	1
3	STD-1774	PIN, 1/8 dia. x 1/4 long	1
4	STD-2217	OIL SEAL, 7/8 I.D. x 1-1/2 O.D. x 5/16 wide	1
5	72970	GEAR ASSY., Vacuum pump driven	1
6	71596	WASHER, Accessory driven gear	1
7	8313	GASKET, Vacuum pump	1
8	60430	COVER, Vacuum pump	1
9	STD-8	WASHER, 1/4 plain	4
10	STD-160	WASHER, 1/4 lock, internal teeth	4
11	STD-1411	NUT, 1/4-20 plain	4

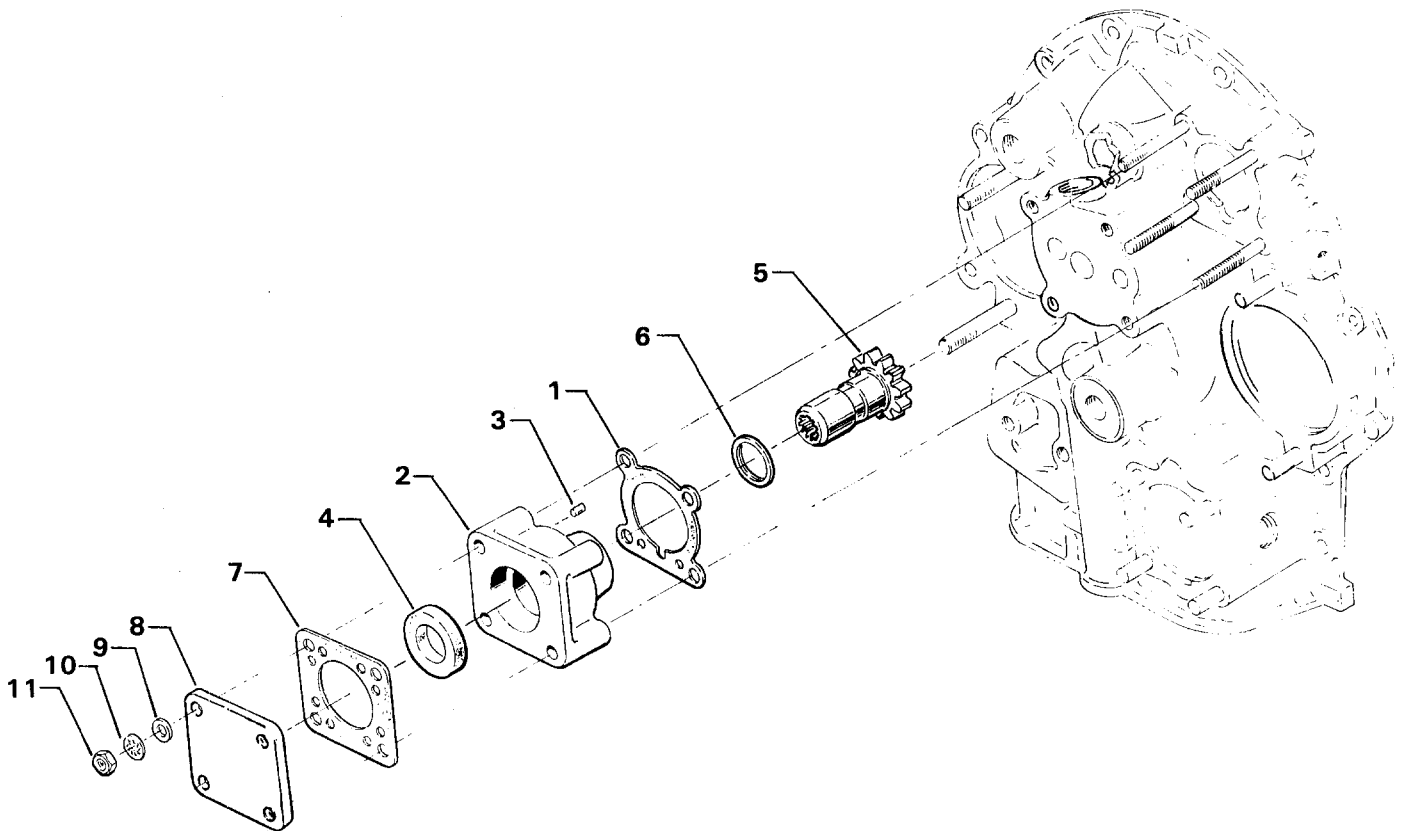


Figure 12. VACUUM PUMP DRIVE AND COVER

**ACCESSORY HOUSING AND RELATED PARTS**  
**OIL PRESSURE SCREEN AND OIL COOLER BYPASS VALVE**

FIG. REF. 13	PART NUMBER	DESCRIPTION	QUANTITY PER ASSEMBLY
1	STD-294	GASKET, 7/8 O.D. x 5/8 I.D. x 3/32 annular	1
2	69675	CONNECTOR, Accessory hsg. to oil cooler inlet hose	1
3	STD-784	PLUG, 3/8 pipe, Allen	2
4	71140	FITTING, Breather (assemble in accessory hsg.)	1
5	62817	SCREEN ASSY., Oil pressure	1
6	61173	GASKET, Oil pressure housing	1
7	69510	HOUSING, Thermostatic valve & oil press. screen	1
8	STD-294	GASKET, 7/8 O.D. x 5/8 I.D. x 3/32 annular	1
9	STD-8	WASHER, 1/4 plain	4
10	STD-1856	SCREW, 1/4-20 x 31/32-1.00 long, hex. hd. slotted	4
11	53E19600	VALVE ASSY., Temp. control, oil cooler bypass	1
12	76510	GASKET, Valve assembly	1

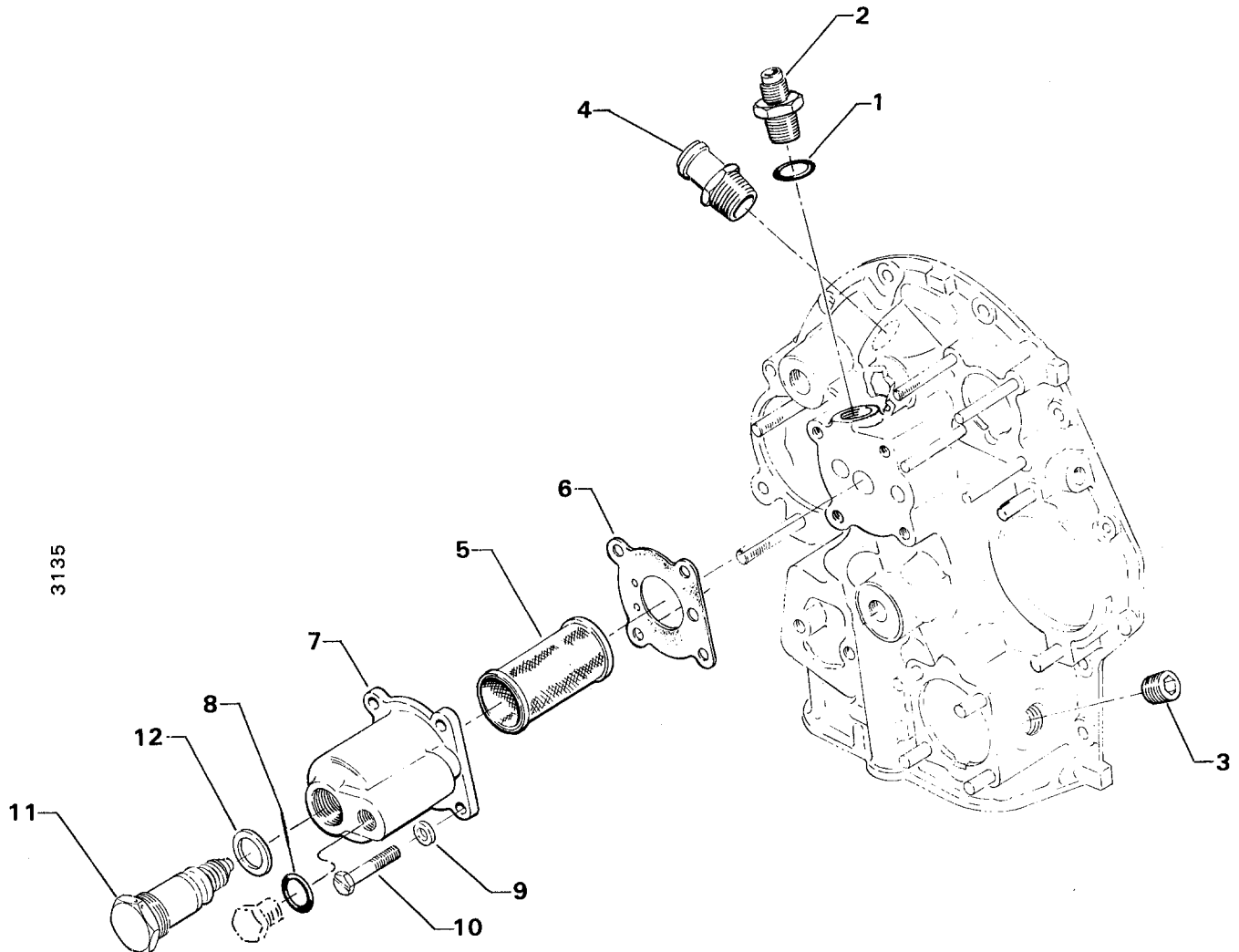


Figure 13. OIL PRESSURE SCREEN AND OIL COOLER BYPASS VALVE

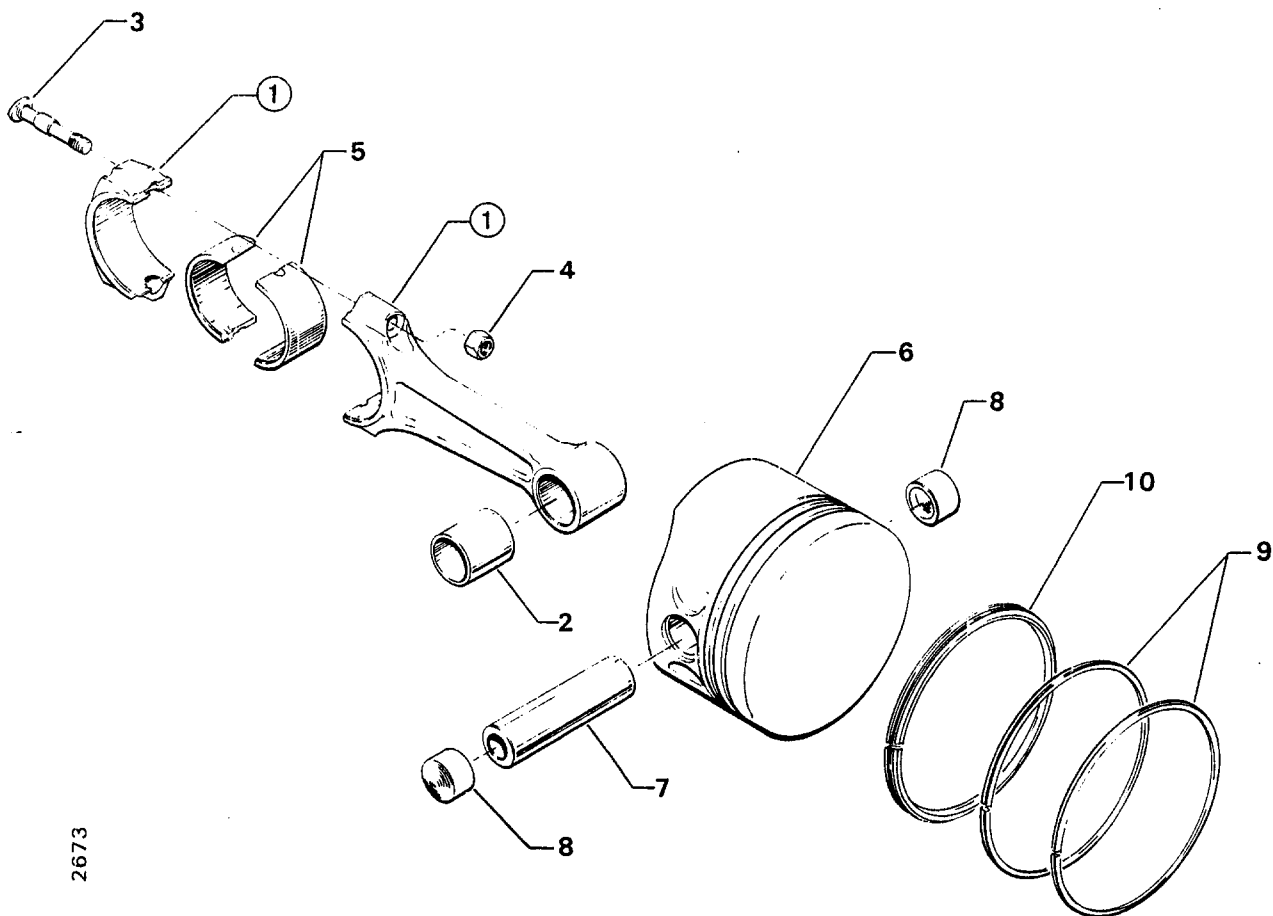
**SECTION**

**3**

**CYLINDER, PISTON  
AND VALVE TRAIN**

**CYLINDER, PISTON AND VALVE TRAIN**  
CONNECTING RODS, PISTONS AND RING ASSEMBLIES

FIG. REF. 14	PART NUMBER	DESCRIPTION	QUANTITY PER ASSEMBLY
1	LW-11750	CONNECTING ROD ASSEMBLY	4
2	LW-13923	BUSHING, Connecting rod, upper	4
3	75061	BOLT, Connecting rod	8
4	LW-12186	NUT, Connecting rod bolt	8
5	LW-13521	BEARING, Connecting rod	8
6	75089	PISTON, Comp. ratio 8.50:1	4
7	LW-14078	PIN, Piston	4
8	60828	PLUG, Piston pin	8
9	74241	RING, Piston, compression	8
10	73857	RING, Piston, oil regulating, expander type	4



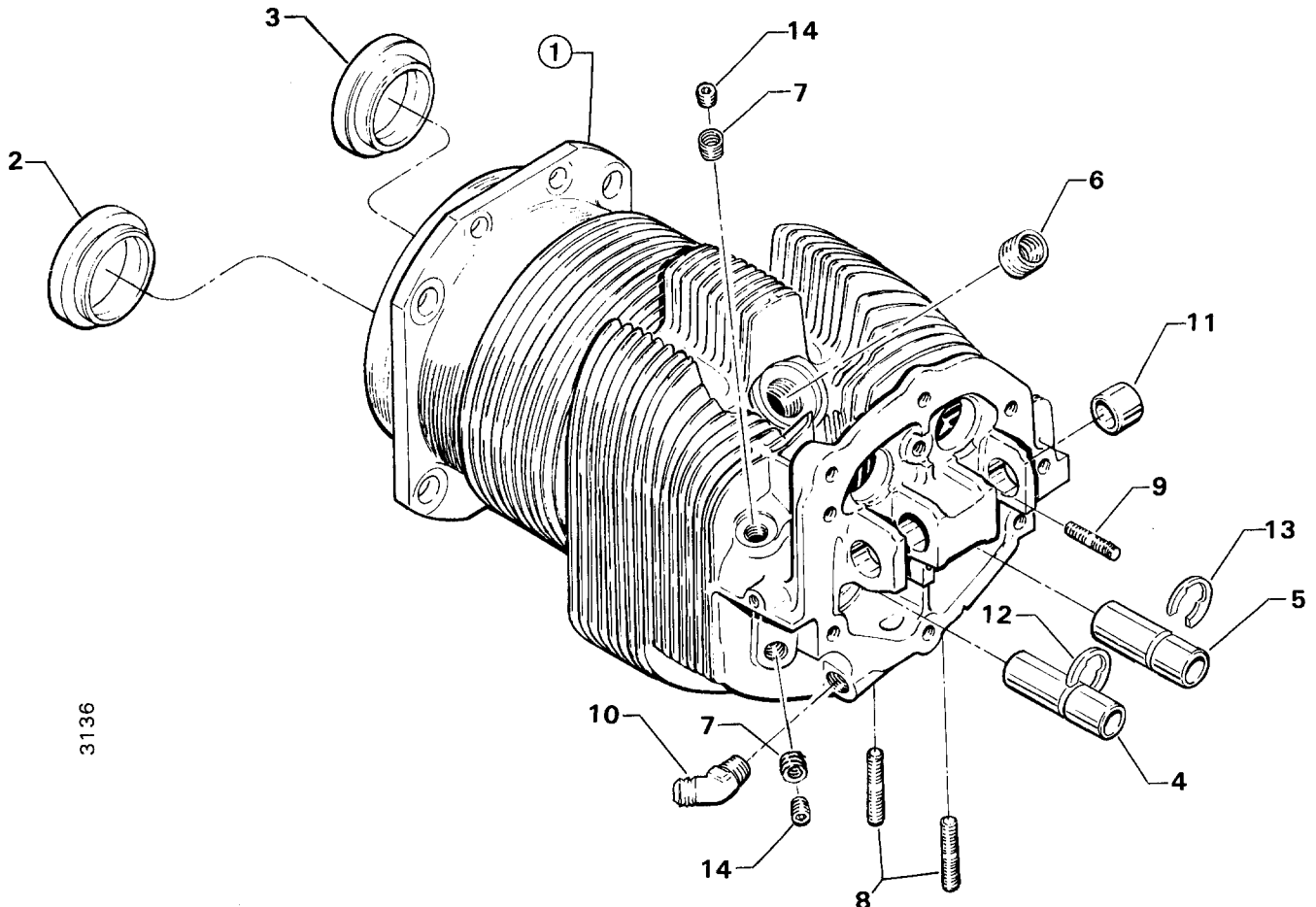
2673

Figure 14. CONNECTING RODS, PISTONS AND RING ASSEMBLIES

**CYLINDER, PISTON AND VALVE TRAIN**  
CYLINDER ASSEMBLY

FIG. REF. 15	PART NUMBER	DESCRIPTION	QUANTITY PER ASSEMBLY
1	LW-12427	CYLINDER AND HEAD ASSY., Nitrided	4
2	72057	SEAT, Intake valve	4
3	72058	SEAT, Exhaust valve	4
4	76943*	GUIDE, Valve intake, grooved (flangeless)	4
5	77160**	GUIDE, Valve exhaust, grooved (flangeless)	4
6	66796	INSERT, Spark plug	8
7	STD-1872	INSERT, 1/8-27 Heli-Coil taper pipe thread	8
8	31C-12	STUD, 5/16-18 x 1-1/2 long	8
9	25C-9	STUD, 1/4-20 x 1-1/8 long	4
10	MS20823-6D	ELBOW, 45°, 3/8 flared tube	4
11	66610	BUSHING, Rocker shaft	16
12	LW-19298	RING, Guide retaining, intake	4
13	LW-19299	RING, Guide retaining, exhaust	4
14	1102★	PLUG, 1/8-27 NPT, Allen head	8

- \* Item No. 12 valve guide ring Part No. LW-19298 must be ordered separately when ordering this part. Refer to latest edition of Service Instruction No. 1256.
- \*\* Item No. 13 valve guide ring Part No. LW-19299 must be ordered separately when ordering this part. Refer to latest edition of Service Instruction No. 1256.
- ★ Assemble in cylinder head.



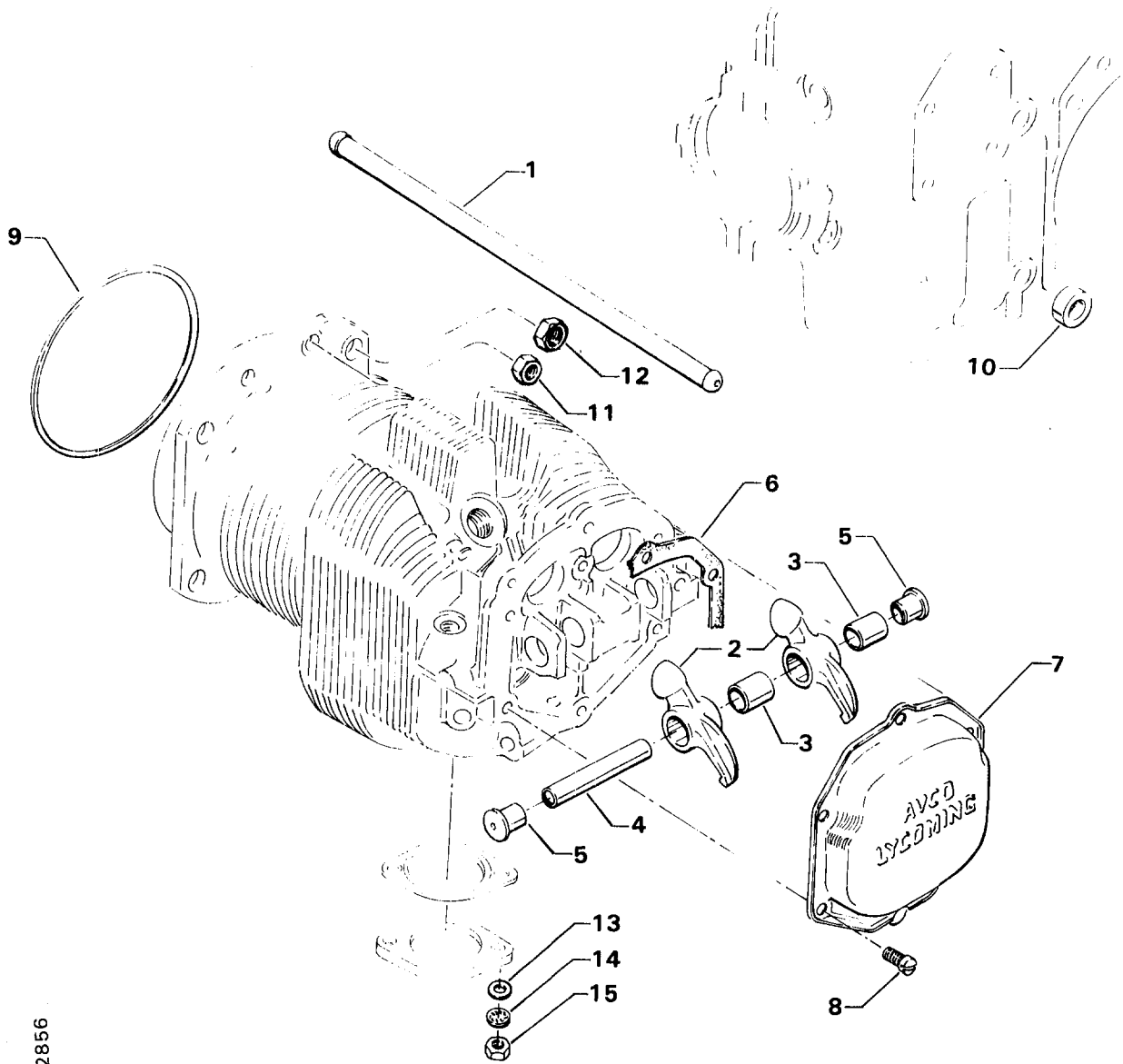
3136

Figure 15. CYLINDER ASSEMBLY

**CYLINDER, PISTON AND VALVE TRAIN**  
 CYLINDER RELATED PARTS

FIG. REF. 16	PART NUMBER	DESCRIPTION	QUANTITY PER ASSEMBLY
1	73434*	ROD ASSY., Push	AR
	73435*	ROD ASSY., Push	AR
	73436*	ROD ASSY., Push	AR
	73437*	ROD ASSY., Push	AR
2	LW-18790	ROCKER ASSY., Valve	8
3	74637	BUSHING, Valve rocker	8
4	LW-13790	SHAFT, Valve rocker	4
5	LW-12892	THRUST BUTTON, Rocker shaft	8
6	75906	GASKET, Rocker box cover	4
7	61247	COVER, Rocker box	4
8	STD-1925	SCREW, 1/4-20 x 5/8 long, pan head, self-locking	24
9	71481	RING, Oil seal, 3/32 dia. x 4-27/32 I.D.	4
10	74887	SPACER, 33/64 I.D. x 7/8 O.D. x 3/8 thick	2
11	383-B	NUT, 3/8-24 plain	16
12	STD-2090	NUT, 1/2-20 plain	18
13	STD-35	WASHER, 5/16 plain	8
14	STD-475	WASHER, 5/16 lock, internal teeth	8
15	STD-1410	NUT, 5/16-18 plain	8

\* See latest edition of Avco Lycoming Service Instruction No.1060 for complete push rod application.



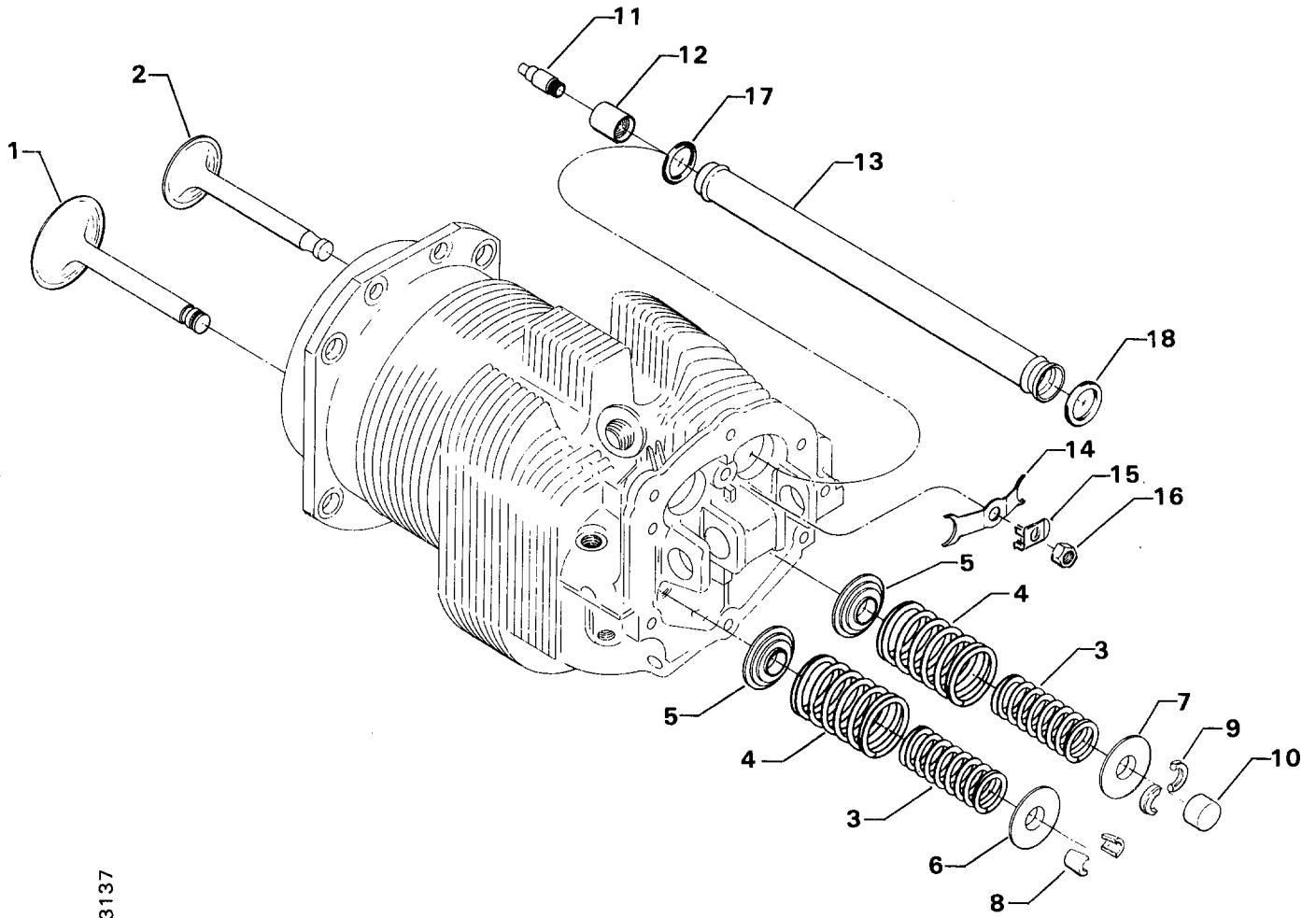
2856

Figure 16. CYLINDER RELATED PARTS



**CYLINDER, PISTON AND VALVE TRAIN  
VALVE ASSEMBLY**

<b>FIG. REF. 17</b>	<b>PART NUMBER</b>	<b>DESCRIPTION</b>	<b>QUANTITY PER ASSEMBLY</b>
1	73938	VALVE, Intake	4
2	LW-19001	VALVE, Exhaust (rotator type)	4
3	LW-11795	SPRING, Valve, inner	8
4	LW-11800	SPRING, Valve, outer	8
5	LW-13323	SEAT, Valve spring, lower	8
6	LW-10077	SEAT, Valve spring, upper, intake	4
7	LW-16475	SEAT, Valve spring, upper, exhaust (rotator type)	4
8	60009	KEY, Valve, intake	8
9	MS13997-3	KEY, Valve, exhaust (rotator type)	8
10	MS13998-3	CAP, Valve stem, exhaust (rotator type)	4
11	78290	PLUNGER ASSY., Hydraulic tappet	8
12	78524	SOCKET, Push rod, hydraulic tappet	8
13	LW-11485	TUBE, Push rod shroud	8
14	LW-14995	SPRING, Shroud tube	4
15	LW-12272	LOCKPLATE, Shroud tube	4
16	STD-1411	NUT, 1/4-20 plain	4
17	LW-18661	SEAL, Shroud tube	8
18	70310	SEAL, Shroud tube	8

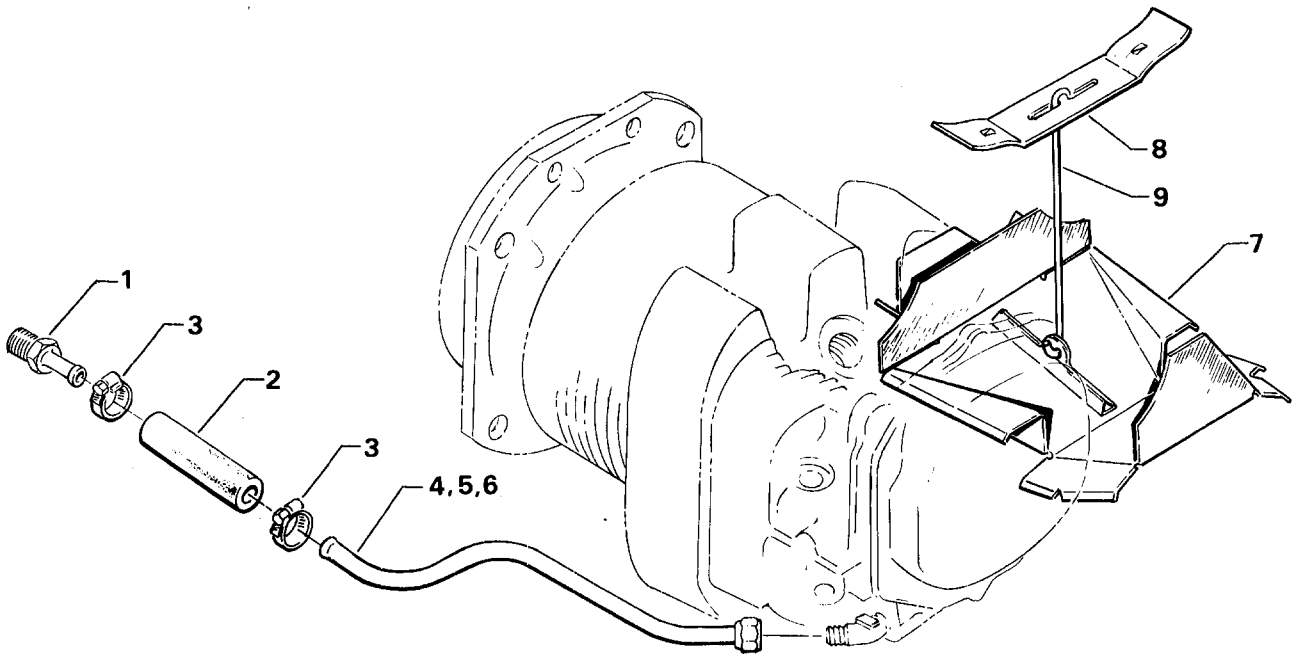


3137

Figure 17. VALVE ASSEMBLY

**CYLINDER, PISTON AND VALVE TRAIN**  
 CYLINDER HEAD DRAIN TUBES AND INTERCYLINDER COOLING BAFFLES

<b>FIG. REF. 18</b>	<b>PART NUMBER</b>	<b>DESCRIPTION</b>	<b>QUANTITY PER ASSEMBLY</b>
1	STD-684	NIPPLE, Straight, 3/8 I.D. hose	4
2	STD-1821	HOSE, 3/8 I.D. x 2-1/2 long	4
3	LW-15592-5-05	CLAMP, Hose	8
4	68759	TUBE ASSY., Oil drain, cylinder no. 1	1
5	68760	TUBE ASSY., Oil drain, cylinder no. 2	1
6	68761	TUBE ASSY., Oil drain, cylinder nos. 3 & 4	2
7	75339	BAFFLE ASSY., Intercylinder	2
8	71611	RETAINER, Intercylinder baffle	2
9	71610	HOOK, Intercylinder baffle retainer	2



3016

Figure 18. CYLINDER HEAD DRAIN TUBES AND INTERCYLINDER COOLING BAFFLES

**SECTION**

**4**

**IGNITION SYSTEM**

**IGNITION SYSTEM**  
MAGNETOS, DRIVES, HARNESSES AND SPARK PLUGS

FIG. REF. 19	PART NUMBER	DESCRIPTION	QUANTITY PER ASSEMBLY
1	61665	GEAR, Magneto, impulse coupling	1
2	61163	GEAR, Magneto	1
3	62224	GASKET, Magneto adapter and magneto	3
4	LW-12706	ADAPTER, Magneto, impulse coupling	1
5	LW-51360-29	MAGNETO, S4LN-20	1
	LW-51360-37	MAGNETO, Impulse coupling, S4LN-21	1
6	STD-1727	WASHER, Plain, 3/4 O.D. x 21/64 I.D x 1/8 thick	4
7	STD-475	WASHER, 5/16 lock, internal teeth	4
8	STD-1410	NUT, 5/16-18 plain	4
9	LW-52305-1	KIT ASSY., Magneto ground terminal	2
10	LW-M-2403	HARNESS ASSY., Left magneto	1
	LW-M-2404	HARNESS ASSY., Right magneto	1
11	LW-M-2375	PLATE, Spark plug cable	2
12	72351	SCREW, No. 10-32, self-locking	8
13	LW-14060	CLIP, Two wire for 1/4 screw	2
14	STD-8	WASHER, 1/4 plain	2
15	STD-160	WASHER, 1/4 lock, internal teeth	2
16	AN500-416-18	SCREW, 1/4-20 x 1-1/8 long, fillister head	1
17	LW-25-1.25	SCREW, 1/4-20 x 1-1/4 long	1
18	STD-1411	NUT, 1/4-20 plain	2
19	LW-18959-175-25	CLAMP, 1-3/4 I.D.	4
20	STD-553	SCREW, 6-32 x 1/2 long, round head	4
21	AN365-632A	NUT, 6-32 self-locking	4
22	76734	ZIP STRAP	2
23	1182-B3	SPARK PLUG (Champion REM-40E), Shielded	8
*	M-1985-48	LEAD ASSY., Replacement top & bottom leads	AR

\* Replacement lead assemblies have spark plug terminal end assembled and are shipped with necessary parts to complete magneto end assembly after being cut to proper length.

**NOTE**

The above spark plugs are those used in current production only; this list does not include additional spark plugs that are approved for use in these engines. See latest edition of Service Instruction No. 1042 for complete listing of all approved spark plugs.

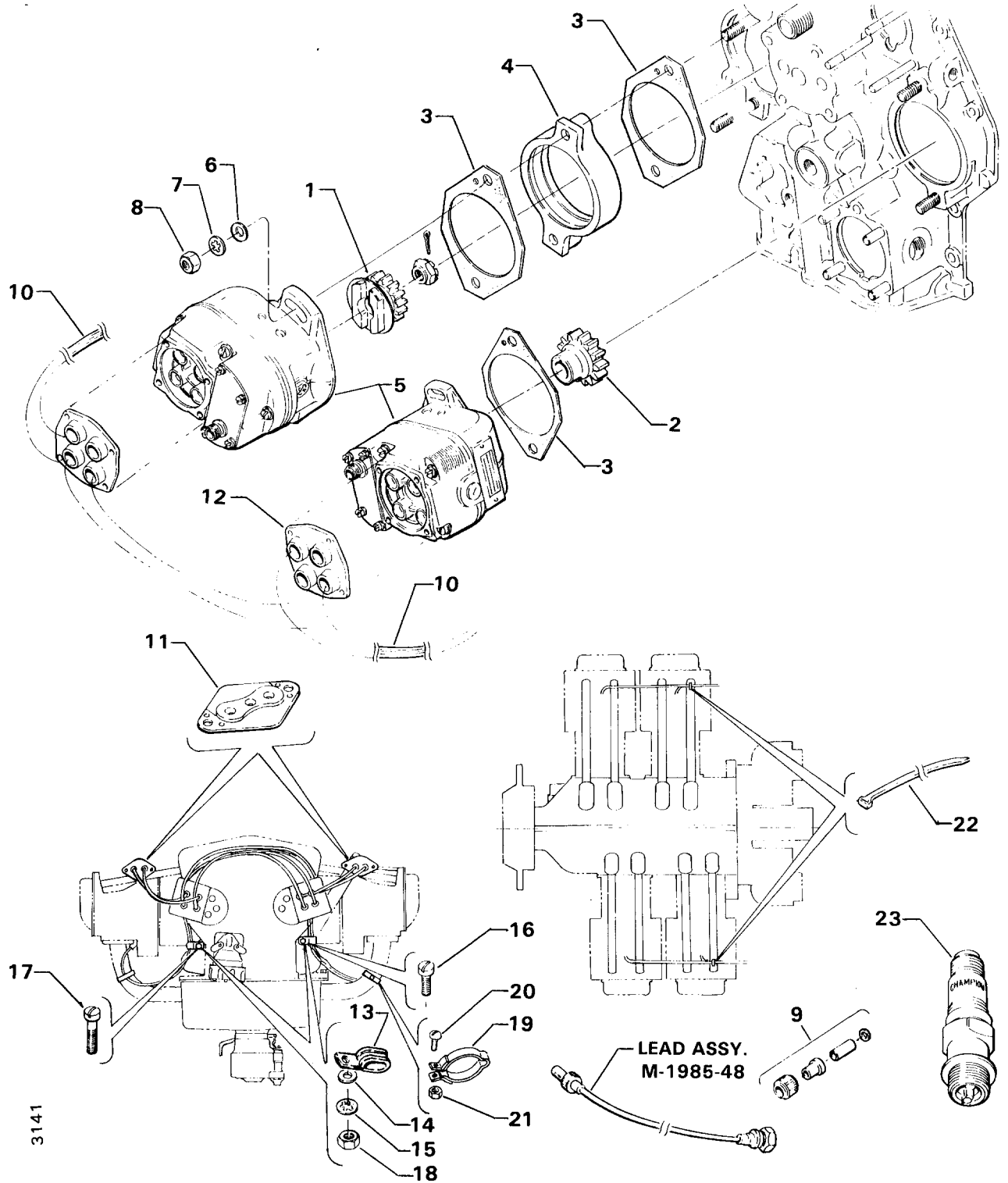


Figure 19. MAGNETOS, DRIVES, HARNESSES AND SPARK PLUGS

**SECTION**

**5**

**ELECTRICAL  
COMPONENTS**



**ELECTRICAL COMPONENTS**  
**ALTERNATOR ASSEMBLY AND BELT**

FIG. REF. 20	PART NUMBER	DESCRIPTION	QUANTITY PER ASSEMBLY
1	LW-14371	ALTERNATOR ASSEMBLY	1
2	36B19484	PULLEY, Alternator	1
3	76026	BELT, Alternator drive, 3/8 wide	1

NOTE

See latest edition of Avco Lycoming Service Instruction No. 1154 for complete listing of FAA approved starters, generators, alternators, regulators and relays.

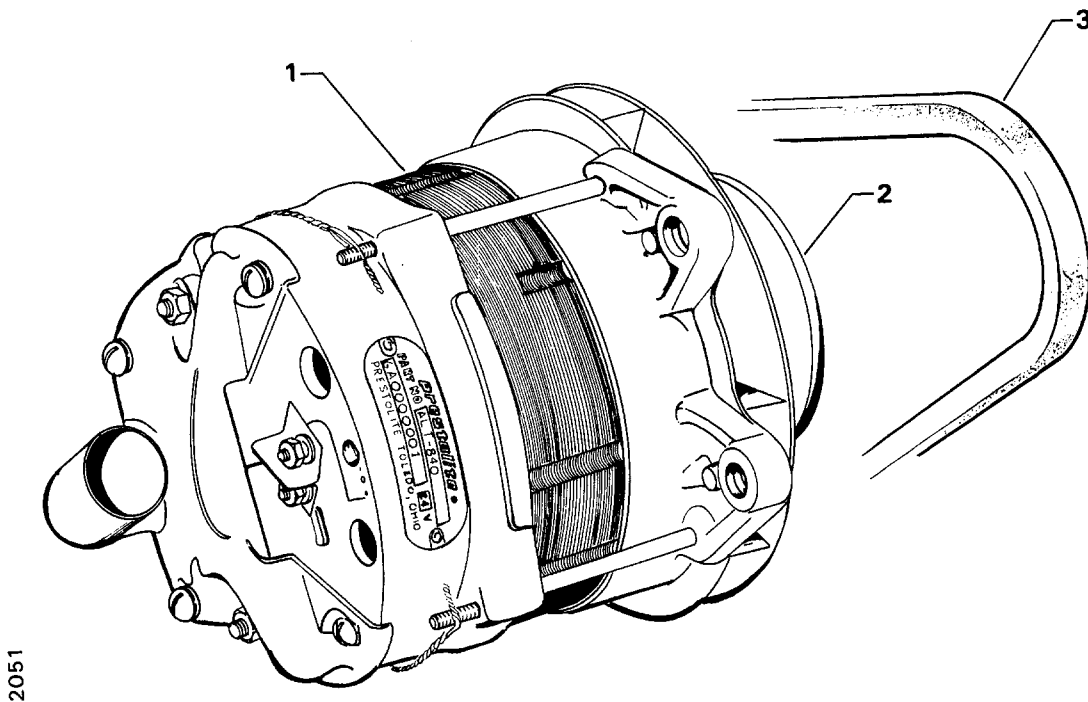


Figure 20. ALTERNATOR ASSEMBLY AND BELT

**ELECTRICAL COMPONENTS**  
**STARTER MOTOR AND ATTACHING PARTS**

FIG. REF. 21	PART NUMBER	DESCRIPTION	QUANTITY PER ASSEMBLY
1	LW-15571	STARTER, 12 volt (3.38:1 internal reduction) MZ-4222	1
2	STD-35	WASHER, 5/16 plain	4
3	STD-475	WASHER, 5/16 lock, internal teeth	4
4	LW-31-1.16	BOLT, 5/16-18 x 1-5/32 long, hex. head	1
5	STD-1410	NUT, 5/16-18 plain	3

NOTE

See latest edition of Avco Lycoming Service Instruction No. 1154 for complete listing of FAA approved starters, generators, alternators, regulators and relays.

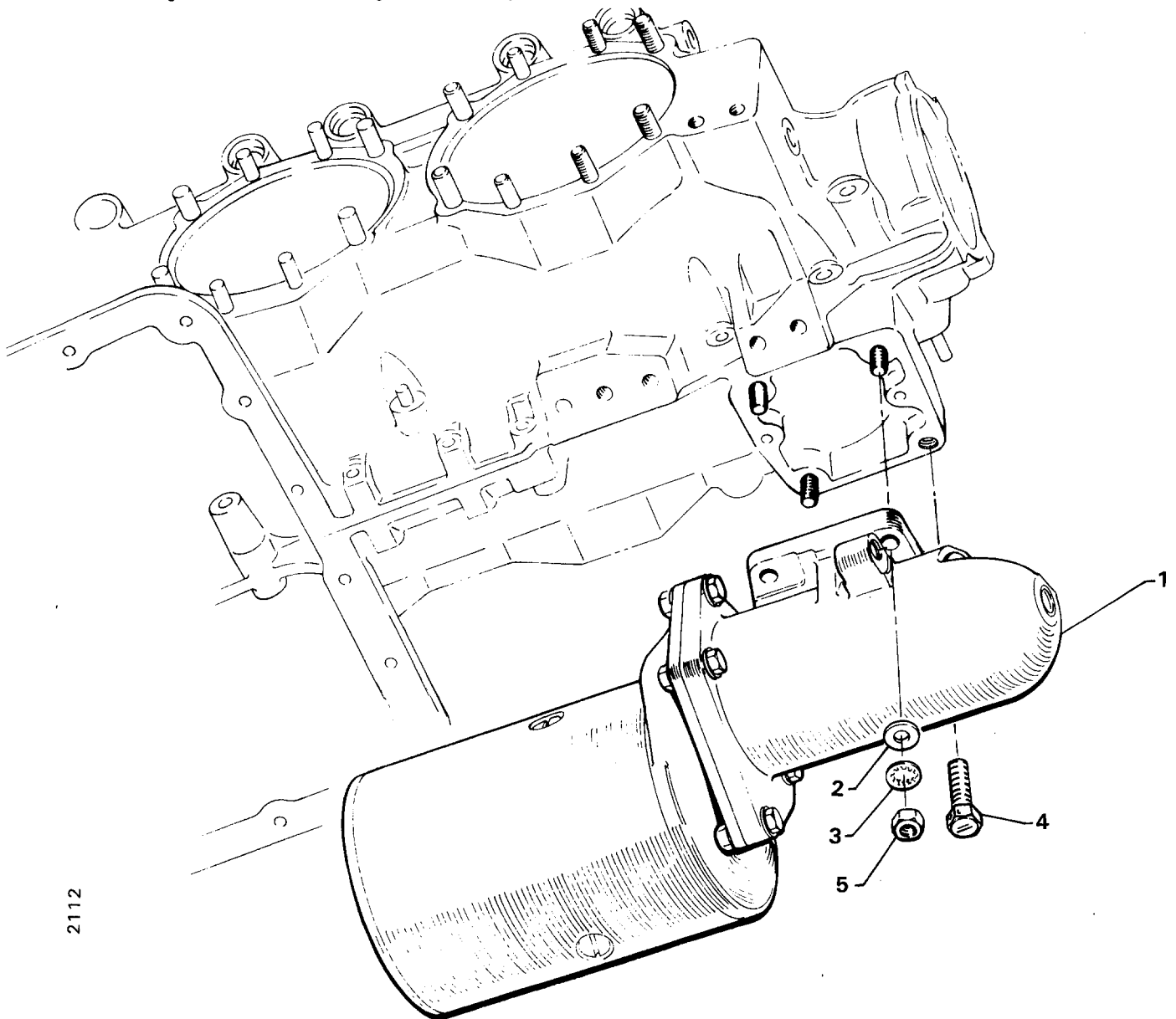


Figure 21. STARTER MOTOR AND ATTACHING PARTS

**ELECTRICAL COMPONENTS**  
ALTERNATOR MOUNTING AND ATTACHING PARTS

FIG. REF. 22	PART NUMBER	DESCRIPTION	QUANTITY PER ASSEMBLY
1	07A19474	BRACKET, Alternator	1
2	73383	LOCKPLATE, 5/16 bolt x 1.00 spacing	1
3	LW-31-0.94	BOLT, 5/16-18 x 15/16 long, hex. head	2
4	75380	LINK, Alternator adjusting	1
5	STD-35	WASHER, 5/16 plain	1
6	LW-31H.75	BOLT, 5/16-18 x 3/4 long, hex. head drive	1
7	STD-1727	WASHER, Plain, 3/4 O.D. x 11/32 I.D. x 1/8 thick	1
8	LW-31H.75	BOLT, 5/16-18 x 3/4 long, hex. head drive	1
9	74323	STRUT, Alternator support	1
10	LW-31H.75	BOLT, 5/16-18 x 3/4 long, hex. head drive	1
11	STD-690	WASHER, 13/16 O.D. x 25/64 I.D. x 1/16 thick	1
12	AN6-14	BOLT, 3/8-24 x 1-37/64 long, hex. hd., drilled end	1
13	STD-690	WASHER, 13/16 O.D. x 25/64 I.D. x 1/16 thick	AR
14	STD-872	NUT, 3/8-24, slotted	1
15	STD-713	PIN, Cotter, 3/32 dia. x 3/4 long	1
16	AN6-16	BOLT, 3/8-24 x 1-53/64 long, hex. hd., drilled end	1
17	76534	SHIM, 1-1/8 O.D. x 13/32 I.D. x .005 thick	AR
18	STD-690	WASHER, 13/16 O.D. x 25/64 I.D. x 1/16 thick	AR
19	STD-872	NUT, 3/8-24 slotted	1
20	STD-713	PIN, Cotter, 3/32 dia. x 3/4 long	1

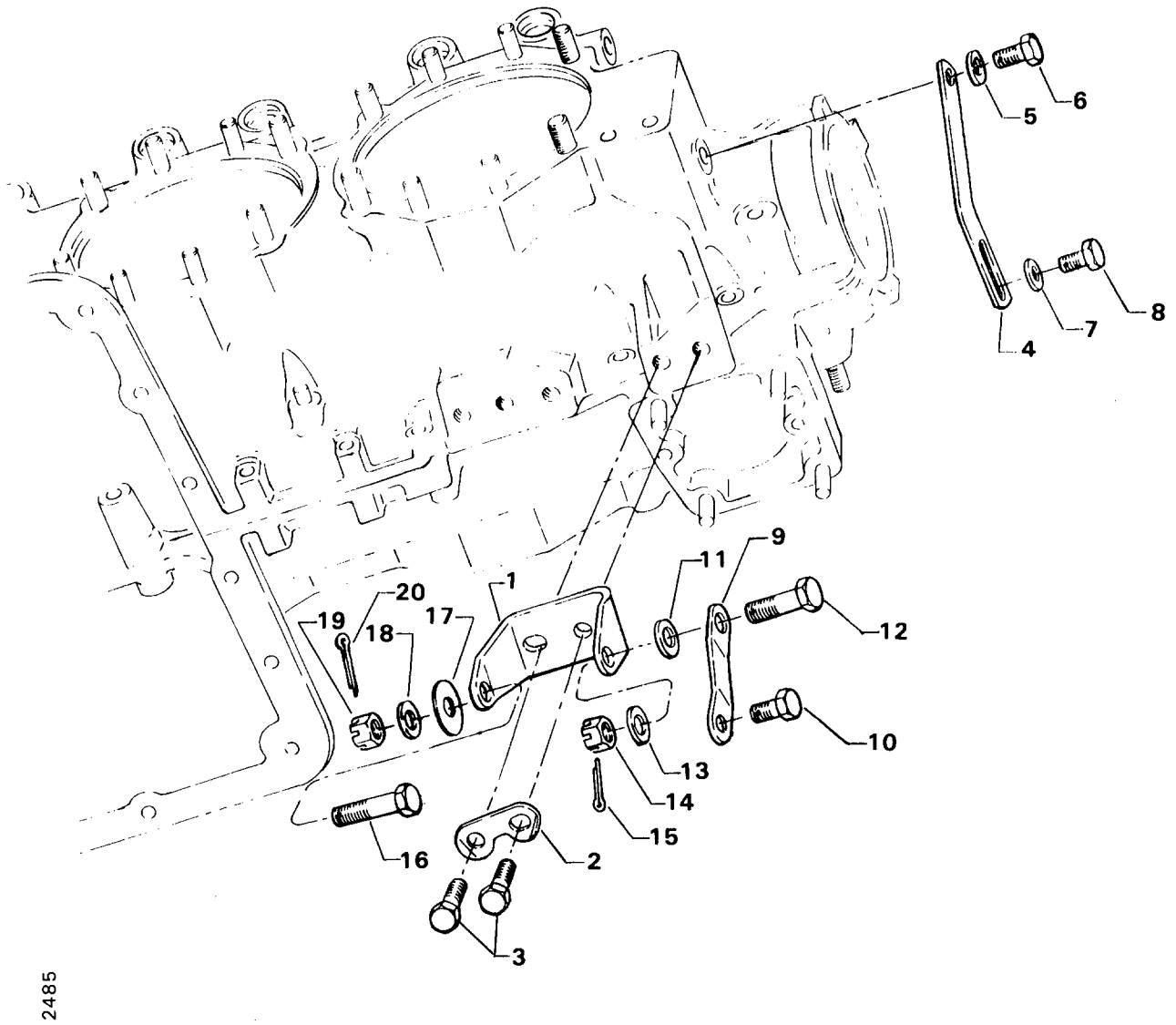


Figure 22. ALTERNATOR MOUNTING AND ATTACHING PARTS

**SECTION**

**6**

**OIL SUMP AND  
INDUCTION SYSTEM**

**OIL SUMP AND INDUCTION SYSTEM**  
 OIL SUMP ASSEMBLY AND OIL SUCTION SCREEN

FIG. REF. 23	PART NUMBER	DESCRIPTION	QUANTITY PER ASSEMBLY
1	LW-13353	GASKET, Oil sump	1
2	78915	SUMP ASSEMBLY, Oil	1
3	78914	CONNECTION, Intake pipe	4
4	61400	STUD, 1/4-20 x 1-3/16 long	4
5	31C-15	STUD, 5/16-18 x 1-7/8 long	4
6	STD-91	PLUG, 1/2-14 NPT, Allen head	1
7	STD-551	PLUG, 1/2-14 NPT, sq. head, drilled	2
8	STD-8	WASHER, 1/4 plain	28
9	STD-160	WASHER, 1/4 lock, internal teeth	20
10	LW-25-0.94	BOLT, 1/4-20 x 15/16 long, hex. head	14
11	LW-25-1.13	BOLT, 1/4-20 x 1-1/8 long, hex. head	2
12	STD-1411	NUT, 1/4-20 plain	12
13	70484	SCREEN, Oil suction	1
14	STD-111	GASKET, 1.00 I.D. x 1-1/4 O.D. x 3/32 annular	1
15	LW-12545	PLUG, 5/8 hex. hd. x 1.00-20 thread	1

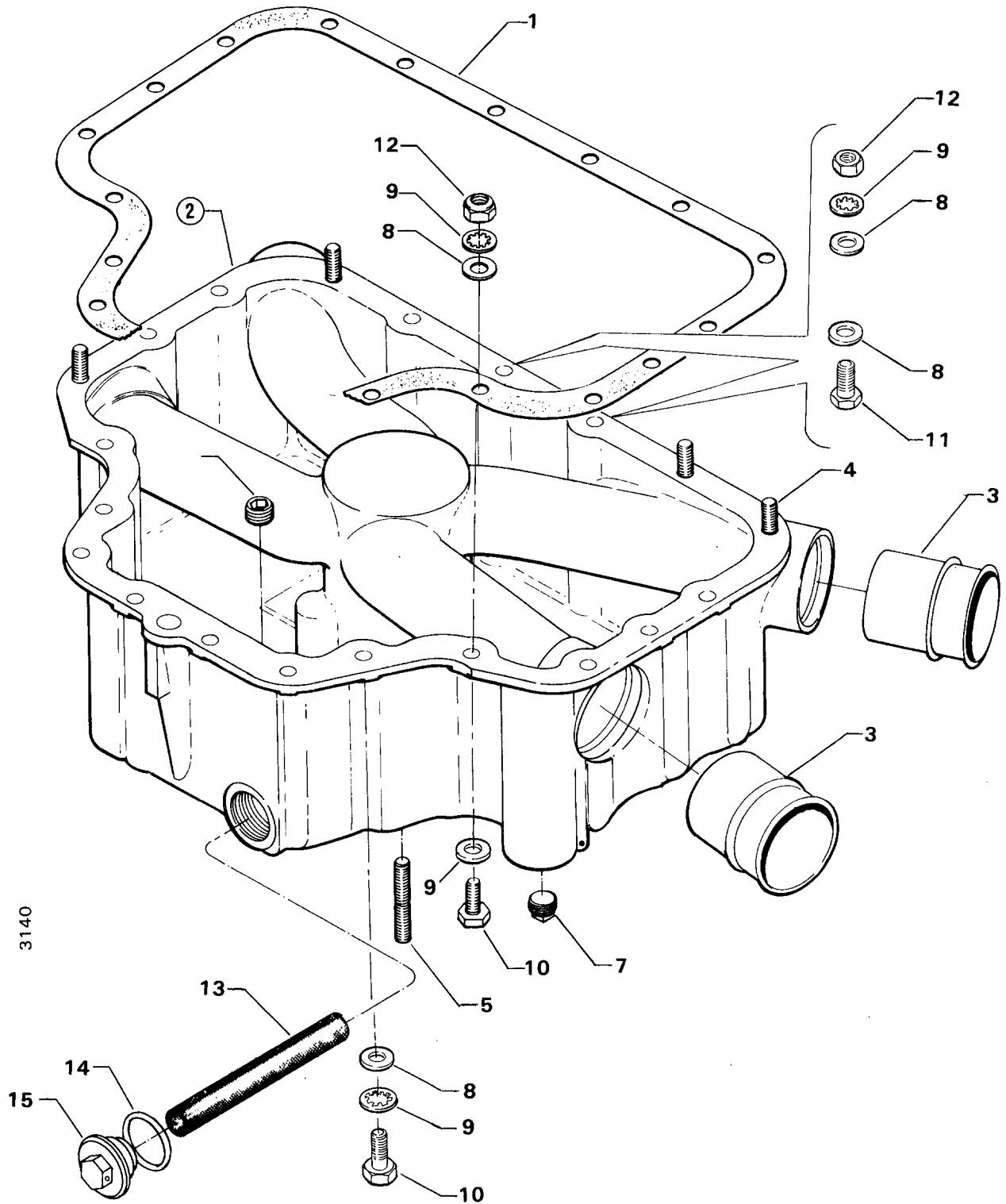
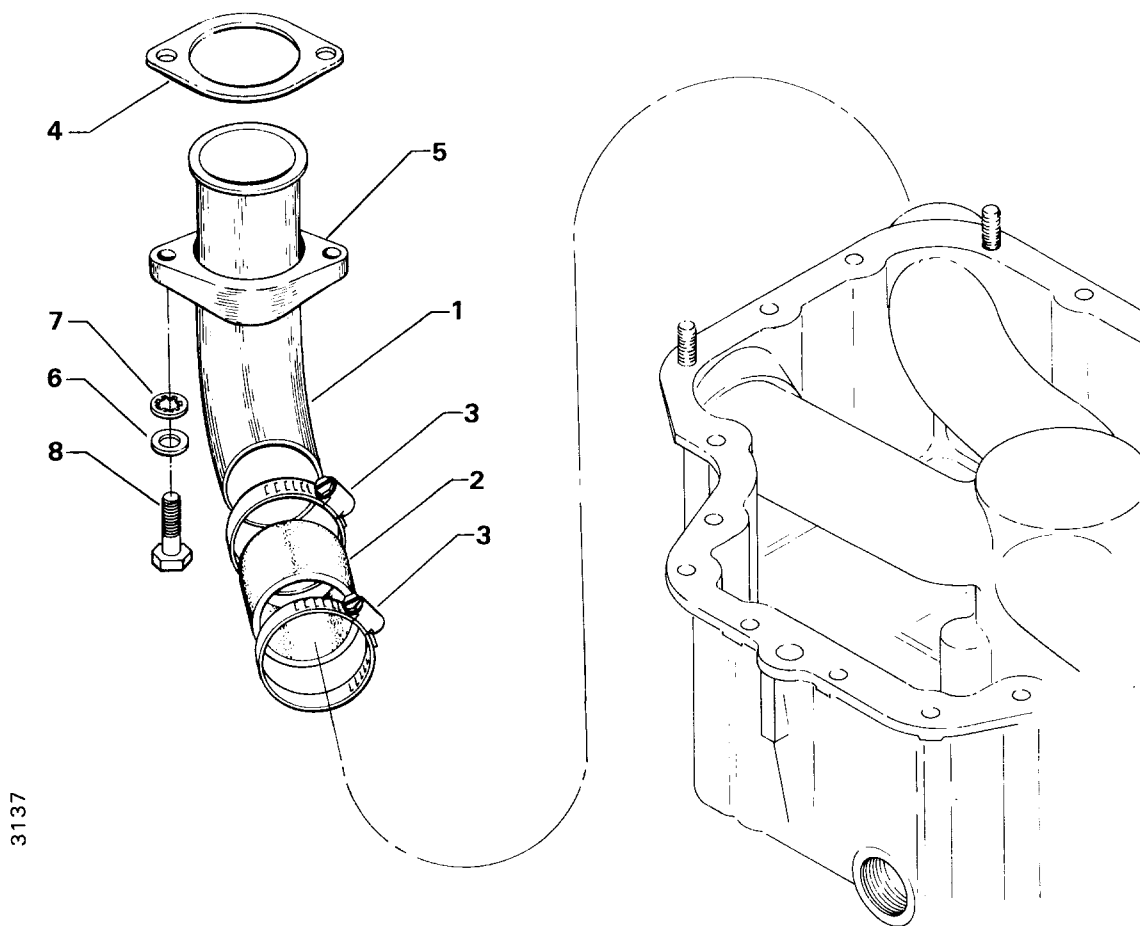


Figure 23. OIL SUMP ASSEMBLY AND OIL SUCTION SCREEN

**OIL SUMP AND INDUCTION SYSTEM**  
INTAKE PIPES AND ATTACHING PARTS

FIG. REF. 24	PART NUMBER	DESCRIPTION	QUANTITY PER ASSEMBLY
1	70485	PIPE, Intake	4
2	69603	HOSE, 1-3/4 I.D. x 2-3/16 O.D. x 1-3/4 long	4
3	LW-15592-8-28	CLAMP, Hose	8
4	71973	GASKET, 2 bolt flange, 1-7/8 I.D.	4
5	73346	FLANGE, Intake pipe, upper	4
6	STD-8	WASHER, 1/4 plain	8
7	STD-160	WASHER, 1/4 lock, internal teeth	8
8	LW-25-1.25	BOLT, 1/4-20 x 1-1/4 long, hex. head	8



3137

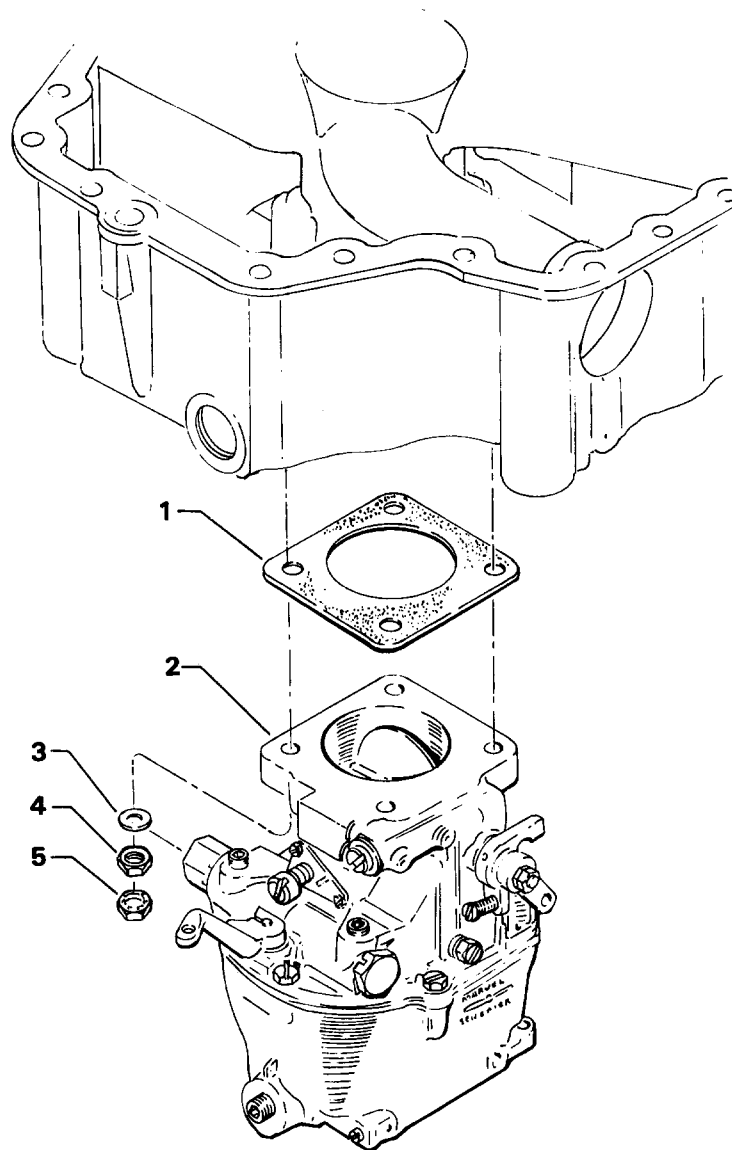
Figure 24. INTAKE PIPES AND ATTACHING PARTS



Reciprocating Engine Division/  
 Subsidiary of Textron Inc.

**OIL SUMP AND INDUCTION SYSTEM**  
**CARBURETOR ASSEMBLY**

FIG. REF. 25	PART NUMBER	DESCRIPTION	QUANTITY PER ASSEMBLY
1	66224	GASKET, Carburetor	1
2	71098	CARBURETOR, (10-3878) (Model MA-4-5)	1
3	STD-35	WASHER, 5/16 plain	4
4	STD-1410	NUT, 5/16-18 plain	4
5	STD-36	LOCKNUT, 5/16, palnut	4



2432

**Figure 25. CARBURETOR ASSEMBLY**

OIL SUMP AND INDUCTION SYSTEM  
PRIMING SYSTEM

FIG. REF. 26	PART NUMBER	DESCRIPTION	QUANTITY PER ASSEMBLY
1	LW-12098-0-280	TUBE ASSY., Primer, cyl. no. 1	1
2	LW-12098-0-170	TUBE ASSY., Primer, cyl. no. 2	1
3	LW-12598	SLEEVE, Priming line	3
4	LW-12098-0-120	TUBE ASSY., Primer, cyl. no. 4	1
5	LW-12098-0-100	TUBE ASSY., Primer, intermediate	1
6	LW-16266-25-13	CLAMP	4
7	1102	PLUG, 1/8 NPT, Allen (assemble in cyl. head)	1
8	LW-18959-175-25	CLAMP, 1-3/4 ID with 1/4 dia. offset	3
9	STD-553	SCREW, No. 6-32 x 1/2 long, rd. hd.	3
10	AN365-632A	NUT, No. 6-32 self-locking	3
11	STD-853	TEE, Union, 1/8 tube	2
12	63D21408	NIPPLE ASSY., Primer	3

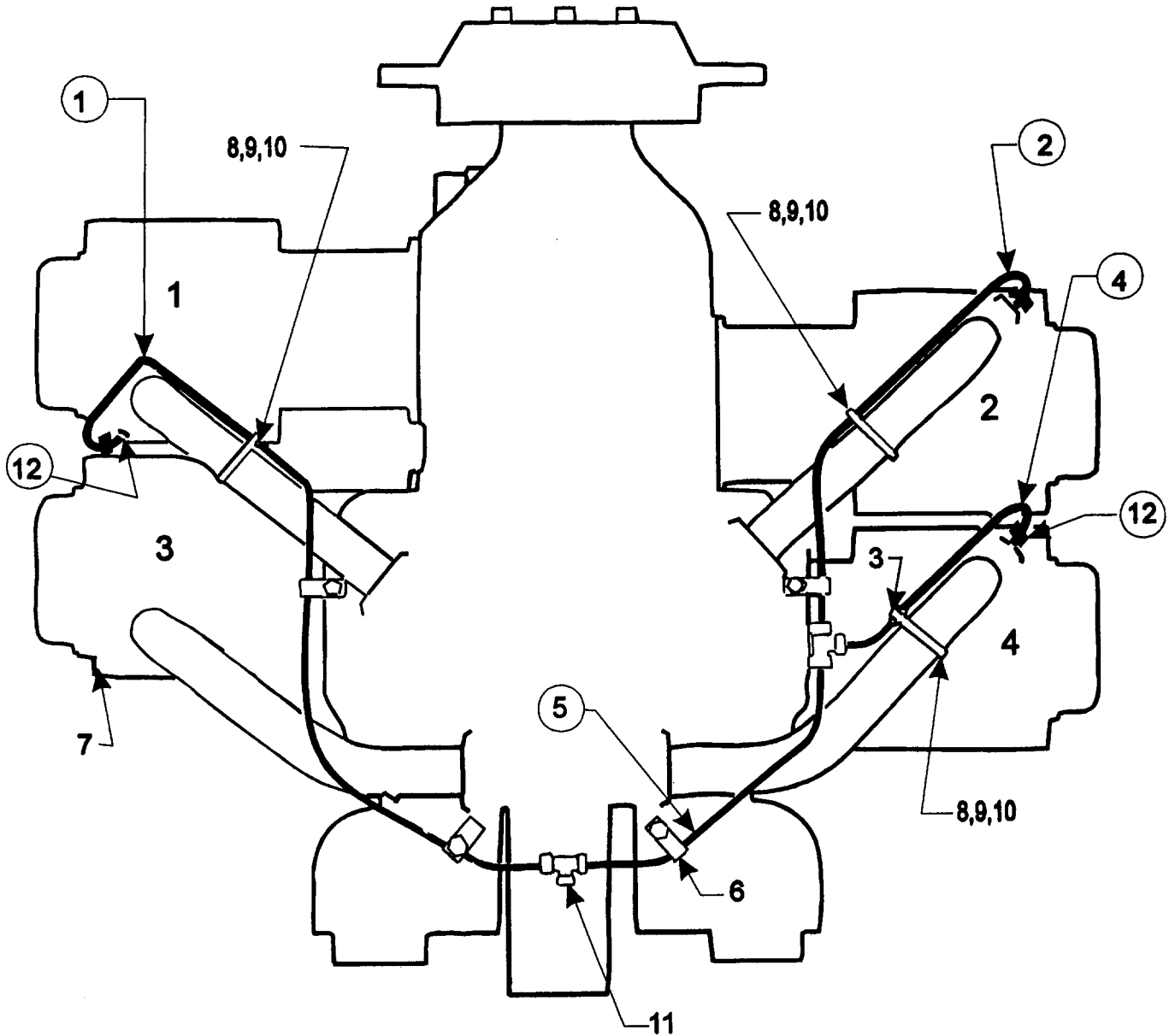


Figure 26. PRIMING SYSTEM

**SECTION**

**7**

**SERVICE KIT  
SECTION**

Reciprocating Engine Division/  
Subsidiary of Textron Inc.**SERVICE KIT SECTION****SEAL AND GASKET SET  
WIDE CYLINDER FLANGE MODELS**

Part No.	Part Name	Qty.
75439-1	SEAL AND GASKET SET	1
AN901-8A	GASKET	1
STD-111	GASKET, Annular	1
STD-2217	SEAL, Oil	1
STD-213	SEAL, Oil (fuel pump drive)	1
STD-294	GASKET, Annular	2
STD-1045	GASKET, Annular	1
1691-C	GASKET, Fuel pump pad	1
8313	GASKET, Vacuum pump	1
60096	GASKET, Fuel pump	1
LW-18639	LOCKPLATE, Crankshaft gear	1
LW-14260	SEAL, Tachometer	1
61173	GASKET, Oil press. hsg.	1
61183	GASKET, Accessory adapter	1
62224	GASKET, Magneto adapter	3
LW-18661	SEAL, Shroud tube	8
LW-19296	GASKET, Exhaust flange	4
66224	GASKET, Carburetor	2
68315	GASKET, Accessory drive adapter	1
LW-13353	GASKET, Oil sump	1
69164	GASKET, Fuel pump adapter	1
69345	SPACER	4
69551	GASKET, Accessory pad cover	1
70310	SEAL, Shroud tube	8
71481	RING, Oil seal	4
71973	GASKET, Intake flange	4
72053	GASKET, Governor drive pad	2
72059	GASKET	1
72075	SEAL, Oil	6
72078	LOCKPLATE, Cam gear	2
72091	RING, Oil seal	2
73383	LOCKPLATE	2
73817	LOCKPLATE, Crankshaft idler gear shaft	2
73818	GASKET, Accessory housing	1
74065	RING, Oil level gage seal	1
74068	RING, Oil level gage seal	1
75906	GASKET, Rocker box cover	4
76510	GASKET	1
76940	SEAL, Crankshaft oil	1
LW-13792	SEAL, Crankshaft oil	1
LW-12272	LOCKPLATE, Shroud tube	4
LW-12681	GASKET, Magneto	2
LW-12795	GASKET	1
LW-14995	SPRING	4
LW-10332	LOCKPLATE	1
70455	GASKET	1
STD-1763	PALNUT	4
72220	GASKET	1
72312	RING, Oil seal	1

**SERVICE KIT SECTION**

**SEAL AND GASKET SET (Continued)**  
**WIDE CYLINDER FLANGE MODELS**

Part No.	Part Name	Qty.
75439-1	SEAL AND GASKET SET	1
77154	GASKET, Carburetor	1
77611	GASKET, Exhaust flange	4
72829	LOCKPLATE	1
73189	GASKET, Carburetor shroud	1

**SERVICE KIT SECTION**

**CYLINDER, PISTON AND RING KIT  
WIDE CYLINDER FLANGE MODELS**

Part No.	Part Name	Qty.
76296	CYLINDER, PISTON AND RING ASSY.	1
MS13997-3	KEY, Valve, exhaust (rotator type)	2
MS13398-3	CAP, Valve stem, exhaust (rotator type)	1
STD-1215	BOLT	2
STD-1411	NUT, Plain, 1/4-20	1
STD-1925	SCREW	6
60009	KEY, Valve, intake	2
60828	PLUG, Piston pin	2
61247	COVER, Rocker box	1
LW-18661	SEAL, Shroud tube	2
70310	SEAL, Shroud tube	2
71481	SEAL, Cylinder base	1
72198	PLUG, Piston	2
73857 or LW-12328	RING, Piston, oil regulator	1
73938	VALVE, Intake	1
74241	RING, Piston, compression	2
LW-19001	VALVE, Exhaust	1
75089	PISTON	1
75906	GASKET, Rocker box cover	1
LW-10077	SEAT, Valve spring, upper, intake	1
LW-11775	PLUG, Piston pin (aluminum)	2
LW-11795	SPRING, Valve, inner	2
LW-11800	SPRING, Valve, outer	2
LW-12272	LOCKPLATE, Shroud tube	1
LW-12427	CYLINDER ASSY., Nitrided	1
LW-12892	THRUST BUTTON	2
LW-13323	SEAT, Valve spring, lower	2
LW-13790	SHAFT, Valve rocker	1
LW-14077	PIN, Piston	1
LW-14995	SPRING, Shroud tube	1
LW-16475	SEAT, Valve spring, upper, exhaust	1
SSP-672	TAG	1
SSP-2472	TAG	1
LW-18790	ROCKER ASSY., Valve	2

**SECTION**

**8**

**NUMERICAL INDEX**



**NUMERICAL INDEX**

PART NO.	PART NAME	PAGE NO.	PART NO.	PART NAME	PAGE NO.
AN365-632A	Nut	4-1	LW-14995	Spring	3-5
AN-500-416-18	Screw	4-1	LW-15571	Starter	5-2
AN565B1032H5	Set Screw	1-9	LW-15592-5-05	Clamp	3-7
AN6-14	Bolt	5-3	LW-15592-8-28	Clamp	6-3
AN6-16	Bolt	5-3	LW-16475	Seat	3-5
AN6-34A	Bolt	1-11	LW-16711	Bearing	1-5
AN960-616L	Washer	1-11	LW-17160	Crankshaft & Plug Assy.	1-7
LW-25-0.94	Bolt	2-3	LW-18085	Spring	1-5
LW-25-0.94	Bolt	6-1	LW-18639	Lockplate	1-7
LW-25-1.13	Bolt	1-11	LW-18661	Seal	3-5
LW-25-1.13	Bolt	6-1	LW-18667	Pin	1-4
LW-25-1.25	Screw	4-1	LW-18790	Rocker Assy.	3-3
LW-25-1.25	Bolt	6-3	LW-18843	Camshaft Assy.	1-4
LW-25-1.50	Bolt	1-11	LW-18959-175-25	Clamp	4-1
LW-25-1.50	Bolt	2-3	LW-19001	Valve	3-5
LW-25-1.75	Bolt	1-11	LW-19298	Ring	3-2
LW-25S1.50	Bolt	1-11	LW-19299	Ring	3-2
LW-31-0.94	Bolt	5-3	LW-51360-29	Magneto	4-1
LW-31-1.16	Bolt	5-2	LW-51360-37	Magneto	4-1
LW-31H.75	Bolt	5-3	LW-52305-1	Kit Assy.	4-1
LW-38-.75	Bolt	2-5	LW-M-2375	Plate	4-1
LW-10077	Seat	3-5	LW-M-2403	Harness Assy.	4-1
LW-11485	Tube	3-5	LW-M-2404	Harness Assy.	4-1
LW-11713	Spring	1-5	M-1985-48	Lead Assy.	4-1
LW-11750	Rod Assy.	3-1	MS13997-3	Key	3-5
LW-11795	Spring	3-5	MS13998-3	Cap	3-5
LW-11800	Spring	3-5	MS16625-1081	Ring	1-4
LW-11997	Seal	1-5	MS20823-6D	Elbow	3-2
LW-12186	Nut	3-1	STD-8	Washer	1-11
LW-12272	Lockplate	3-5	STD-8	Washer	2-3
LW-12427	Cylinder Assy.	3-2	STD-8	Washer	2-7
LW-12545	Plug	6-1	STD-8	Washer	2-8
LW-12706	Adapter	4-1	STD-8	Washer	4-1
LW-12892	Thrust Button	3-3	STD-8	Washer	6-1
LW-13323	Seat	3-5	STD-8	Washer	6-3
LW-13353	Gasket	6-1	STD-19	Dowel	1-9
LW-13521	Bearing	3-1	STD-33	Washer	1-11
LW-13790	Shaft	3-3	STD-33	Washer	2-5
LW-13792	Seal	1-5	STD-35	Washer	1-9
LW-13793	Stud	1-1	STD-35	Washer	2-3
LW-13796	Shaft	1-10	STD-35	Washer	2-5
LW-13884	Bearing	1-5	STD-35	Washer	3-3
LW-13896	Plug	1-9	STD-35	Washer	5-2
LW-13923	Bushing	3-1	STD-35	Washer	5-3
LW-14021	Shaft	1-9	STD-35	Washer	6-4
LW-14060	Clip	4-1	STD-36	Locknut	6-4
LW-14078	Pin	3-1	STD-91	Plug	6-1
LW-14260	Seal	2-3	STD-111	Gasket	6-1
LW-14371	Alternator Assy.	5-1	STD-160	Washer	1-11
LW-14758	Gage Assy.	1-3	STD-160	Washer	2-3

**NUMERICAL INDEX (Cont.)**

PART NO.	PART NAME	PAGE NO.	PART NO.	PART NAME	PAGE NO.
STD-160	Washer	2-7	STD-2090	Nut	3-3
STD-160	Washer	4-1	STD-2167	Screw	1-10
STD-160	Washer	6-1	STD-2168	Nut	1-10
STD-160	Washer	6-3	STD-2213	Screw	1-7
STD-294	Gasket	2-8	STD-2217	Oil Seal	2-7
STD-475	Washer	1-9	25C-9	Stud	3-2
STD-475	Washer	2-5	25C-22	Stud	2-1
STD-475	Washer	3-3	31C-12	Stud	1-1
STD-475	Washer	4-1	31C-12	Stud	2-1
STD-475	Washer	5-2	31C-12	Stud	3-2
STD-514	Dowel	1-1	31C-13	Stud	1-1
STD-551	Plug	6-1	31C-14	Stud	1-1
STD-553	Screw	4-1	31C-15	Stud	6-1
STD-557	Dowel	1-1	31C-19	Stud	2-1
STD-596	Nut	1-11	31CD-17	Stud	2-1
STD-678	Washer	1-11	38-13	Stud	1-1
STD-678	Washer	2-5	38-22	Stud	1-1
STD-684	Nipple	3-7	38D-17	Stud	1-1
STD-690	Washer	5-3	50-15	Stud	1-1
STD-713	Cotter Pin	5-3	383-B	Nut	3-3
STD-784	Plug	2-1	1028B	Ball	1-5
STD-784	Plug	2-8	1102	Plug	1-1
STD-798	Dowel	1-9	1102	Plug	2-1
STD-872	Nut	1-11	1102	Plug	3-2
STD-872	Nut	5-3	1182-B3	Spark Plug	4-1
STD-1045	Gasket	1-5	8313	Gasket	2-7
STD-1065	Dowel	1-7	60009	Key	3-5
STD-1211	Plug	1-7	60096	Gasket	2-5
STD-1339	Plug	1-1	60430	Cover	2-7
STD-1409	Nut	1-11	60803	Strap	1-11
STD-1410	Nut	1-9	60828	Plug	3-1
STD-1410	Nut	2-5	61084	Spring	1-5
STD-1410	Nut	3-3	61098	Adapter Assy.	2-7
STD-1410	Nut	4-1	61163	Gear	4-1
STD-1410	Nut	5-2	61173	Gasket	2-8
STD-1410	Nut	6-4	61174	Shaft	2-3
STD-1411	Nut	1-11	61183	Gasket	2-7
STD-1411	Nut	2-7	61247	Cover	3-3
STD-1411	Nut	3-5	61400	Stud	6-1
STD-1411	Nut	4-1	61510	Plug	1-7
STD-1411	Nut	6-1	61665	Gear	4-1
STD-1420	Nut	2-3	62224	Gasket	4-1
STD-1623	Insert	1-1	62817	Screen Assy.	2-8
STD-1727	Washer	4-1	65007	Retainer	1-1
STD-1727	Washer	5-3	65098	Cover	2-5
STD-1774	Pin	2-7	66224	Gasket	6-4
STD-1821	Hose	3-7	66610	Bushing	3-2
STD-1856	Screw	2-8	66796	Insert	3-2
STD-1872	Insert	3-2	68668	Spring	1-5
STD-1925	Screw	3-3	68759	Tube Assy.	3-7

**NUMERICAL INDEX (Cont.)**

PART NO.	PART NAME	PAGE NO.	PART NO.	PART NAME	PAGE NO.
68760	Tube Assy.	3-7	73857	Ring	3-1
68761	Tube Assy.	3-7	73938	Valve	3-5
69106	Cover	2-5	74068	Ring	1-3
69510	Housing	2-8	74241	Ring	3-1
69551	Gasket	2-5	74323	Strut	5-3
69603	Hose	6-3	74637	Bushing	3-3
69675	Connector	2-8	74887	Spacer	3-3
69796	Dowel	1-1	74996	Gear Assy.	1-10
70310	Seal	3-5	75061	Bolt	3-1
70455	Gasket	1-9	75089	Piston	3-1
70484	Screen	6-1	75154	Stud	1-1
70485	Pipe	6-3	75339	Baffle Assy.	3-7
71098	Carburetor	6-4	75380	Link	5-3
71140	Fitting	2-8	75736	Tube	1-3
71481	Ring	3-3	75906	Gasket	3-3
71596	Washer	2-7	76026	Belt	5-1
71610	Hook	3-7	76110	Housing Assy.	2-1
71611	Retainer	3-7	76118	Spacer	1-4
71973	Gasket	6-3	76121	Shaft Assy.	1-4
72053	Gasket	1-9	76220	Stud	1-11
72057	Seat	3-2	76510	Gasket	2-8
72058	Seat	3-2	76534	Shim	5-3
72059	Gasket	1-3	76734	Zip Strap	4-1
72060	Bushing	1-7	76943	Guide	3-2
72061	Bushing	1-7	77160	Guide	3-2
72062	Bushing	1-7	77309	Bushing	1-10
72075	Seal	1-5	77467	Spring	1-5
72091	Ring	1-5	77579	Support Assy.	1-7
72158	Bushing	1-1	77808	Valve Assy.	1-5
72351	Screw	4-1	77872	Bushing	1-9
72378	Cover	1-9	77874	Gear Assy.	1-9
72566	Gear	1-7	77875	Gear	1-9
72877	Body	1-5	78290	Plunger Assy.	3-5
72970	Gear Assy.	2-7	78524	Socket	3-5
73249	Washer	1-9	78531	Body	2-3
73250	Washer	1-9	78914	Connection	6-1
73251	Washer	1-9	78915	Sump Assy.	6-1
73252	Washer	1-9	05K19423-S	Kit	2-3
73346	Flange	6-3	07A19474	Bracket	5-3
73383	Lockplate	5-3	11B19524	Crankcase Assy.	1-1
73434	Rod Assy.	3-3	13S19646	Gear	1-7
73435	Rod Assy.	3-3	18A19441	Bearing	1-5
73436	Rod Assy.	3-3	36B19484	Pulley	5-1
73437	Rod Assy.	3-3	53E19600	Valve Assy.	2-8
73818	Gasket	2-1			