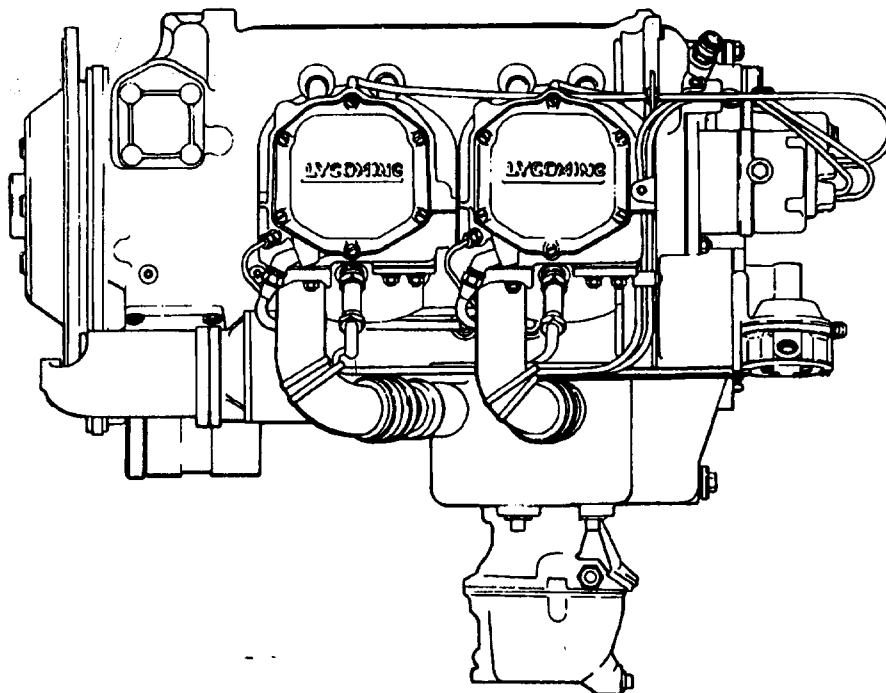


TEXTRON Lycoming AIRCRAFT ENGINES

O-360-A1P Wide Cylinder Flange Crankcase Model Engines

PARTS CATALOG PC-306-6



MARCH 1994

TEXTRON Lycoming

Reciprocating Engine Division/
Subsidiary of Textron Inc.

652 Oliver Street
Williamsport, PA 17701 U.S.A.

This illustrated parts catalog contains a complete parts listing for the Textron Lycoming O-360-A1P wide cylinder flange crankcase model aircraft engines.

Major assembly and sub-assembly parts of the engines are listed in the Group Assembly sections in the general sequence of engine build up.

A Service Kits section and Oversize and Undersize Parts List are included to aid in ordering parts as necessary during overhaul.

The Numerical Index is provided for convenience in finding parts when only the part number is known.

Parts coverage of Vendor Accessories used on Textron Lycoming engines may be found in the appropriate Vendor's Parts Catalog. A list of addresses of where to obtain these publications appears in the latest edition of Service Letter No. L114.

NOTE

The illustrations, pictures and drawings shown in the publication are typical of the subject matter they portray.

This catalog, when used in conjunction with the appropriate overhaul manual, shall be used for parts identification only. Under no circumstances shall this catalog be used as an assembly or installation document.

Any reference in this document to a suppliers/parts manufacturer's product, by name, trademark, part number or other description is solely for the purposes of identification and does not indicate or infer that Textron Lycoming accepts responsibility for quality control and/or airworthiness of parts which do not pass through the Textron Lycoming quality control system.

All Textron Lycoming Reciprocating Engine Division publications will bear the copyright notice © Textron Lycoming 1986, "All Rights Reserved", and all Textron Lycoming publications are to be considered copyrighted and may not be reproduced without permission of the company.

SERVICE BULLETINS, INSTRUCTIONS AND LETTERS

Although the information contained in this parts catalog is up-to-date at time of publication, users are advised to procure current information through all Textron Lycoming distributors or from the factory by subscription. Consult the latest edition of Service Letter No. L114 for subscription information.

HOW TO ORDER PARTS

In ordering parts for your engine, observe the following instructions which will expedite shipment of correct parts required without delay.

- a. Always specify the model and serial number of your engine.
- b. Always specify part number, nomenclature and quantity required.

TABLE OF CONTENTS

SECTION	PAGE
Introduction	i
Table of Contents	ii
Oversize and Undersize Parts Listing	iii
1. CRANKCASE, CRANKSHAFT AND CAMSHAFT GROUP	
Crankcase Assembly	1-1
Oil Level Gage Assembly	1-3
Camshaft Assembly	1-4
Crankcase Related Parts	1-5
Crankshaft Assembly and Related Parts	1-7
Propeller Governor Drive (Crankcase)	1-9
Crankshaft Idler Gears	1-11
Crankcase Attaching Parts	1-13
2. ACCESSORY HOUSING AND RELATED PARTS	
Accessory Housing Assembly	2-1
Oil Pump and Accessory Housing Attaching Parts	2-3
Fuel Pump and Prop. Governor Drive Covers	2-5
Vacuum Pump Drive and Cover	2-7
Oil Pressure Screen and Oil Cooler Bypass Valve	2-8
3. CYLINDER, PISTON AND VALVE TRAIN	
Connecting Rods, Pistons and Ring Assemblies	3-1
Cylinder Assembly	3-2
Cylinder Related Parts	3-3
Valve Assembly	3-5
Cylinder Head Drain Tubes and Intercylinder Cooling Baffles	3-7
4. IGNITION SYSTEM	
Magnetos, Drives, Harnesses and Spark Plugs	4-1
5. ELECTRICAL COMPONENTS	
Alternator Assembly and Belt	5-1
Starter Motor and Attaching Parts	5-2
Alternator Mounting and Attaching Parts	5-3
6. OIL SUMP AND INDUCTION SYSTEM	
Oil Sump Assembly and Oil Suction Screen	6-1
Intake Pipes and Attaching Parts	6-3
Carburetor Assembly	6-4
Priming System	6-5
7. SERVICE KIT SECTION	7-1
8. NUMERICAL INDEX	8-1

Oversize and Undersize Parts Listing

Part No.	Description	Oversize								Undersize		
		P02 .002	P05 .005	P10 .010	P15 .015	P20 .020	P30 .030	P40 .040	P50 .050	M03 .003	M06 .006	M10 .010
61681	GUIDE	See Latest Edition of Service Instruction No. 1256.										
66610	BUSHING		X	X								
66796	INSERT			X								
69796	DOWEL		X									
72057	SEAT			X		X	X					
72058	SEAT			X		X	X					
72155-S	BUSHING		X	X	X	X						
73857	RING			X		X						
74230	GUIDE	See Latest Edition of Service Instruction No. 1256.										
74241	RING			X								
75656-S	BUSHING		X	X	X	X						
79024-S	BUSHING		X	X	X	X						
LW-13521	BEARING			X						X*	X*	X*
LW-13792	SEAL	See Latest Edition of Service Instruction No. 1324.										
LW-13884	BEARING				X					X	X	X
LW-16711	BEARING	See Latest Edition of Service Instruction No. 1377.										
STD-1065	DOWEL	X	X	X	X							
18A19441	BEARING				X					X	X	X

* Also available in P10 oversize.

In addition to the above, studs are available in P03, P07 & P12.

NOTE

When ordering oversize and undersize parts, be sure to specify the required oversize and undersize dimension along with the proper part number. For example, to order bearing LW-13884 in .003 undersize, order part number LW-13884-M3. Oversize code letter is "P" while undersize code letter is "M". These letters are then followed by the number designating the size in thousandths of an inch.

SECTION

1

**CRANKCASE,
CRANKSHAFT AND
CAMSHAFT GROUP**

**CRANKCASE, CRANKSHAFT AND CAMSHAFT GROUP
CRANKCASE ASSEMBLY**

FIG. REF. 1	PART NUMBER	DESCRIPTION	QTY. PER ASSY.
1	LW-18399-1	CRANKCASE ASSEMBLY (See Note)	1
2	75154	STUD, 1/2-13 x 10-1/32 long	2
3	50-15	STUD, 1/2-20 x 1-7/8 long	8
4	38-13	STUD, 3/8-16 x 1-5/8 long	13
5	38D-17	STUD, 3/8-16 x 2-1/8 long, drilled	1
6	LW-13793	STUD, 5/16-18 x 15/16 long, drive	1
7	31C-12	STUD, 5/16-18 x 1-1/2 long	2
8	31C-13	STUD, 5/16-18 x 1-5/8 long	1
9	38-22	STUD, 3/8-16 x 2-3/4 long	1
10	STD-557	DOWEL, 1/2 dia. x 19/32 long, hollow	2
11	72158	BUSHING, Governor drive idler shaft	1
12	STD-514	DOWEL, 5/16 dia. x 1/2 long	2
13	69796	DOWEL, Crankshaft bearing	2
14	1102	PLUG, 1/8-27 NPT, Allen head	4
15	STD-1623	INSERT, 1/4-20 Heli-coil x 3/8	2
16	65007	RETAINER, Shroud tube seal	8
17	STD-1339	PLUG, 1/16-27 NPT, Allen head	1
18	31C-17	STUD, 5/16-18 x 1-3/4 long (driven height 1.46 - 1.50)	4
19	1102	PLUG, 1/8-27 NPT, Allen head	1
20	STD-1339	PLUG, 1/16-27 NPT, Allen head	4

NOTE

This part is not available as a service item. Refer to Service Kits, Section 7, for applicable Crankcase Assembly and Governor Stud Kit Part Number.

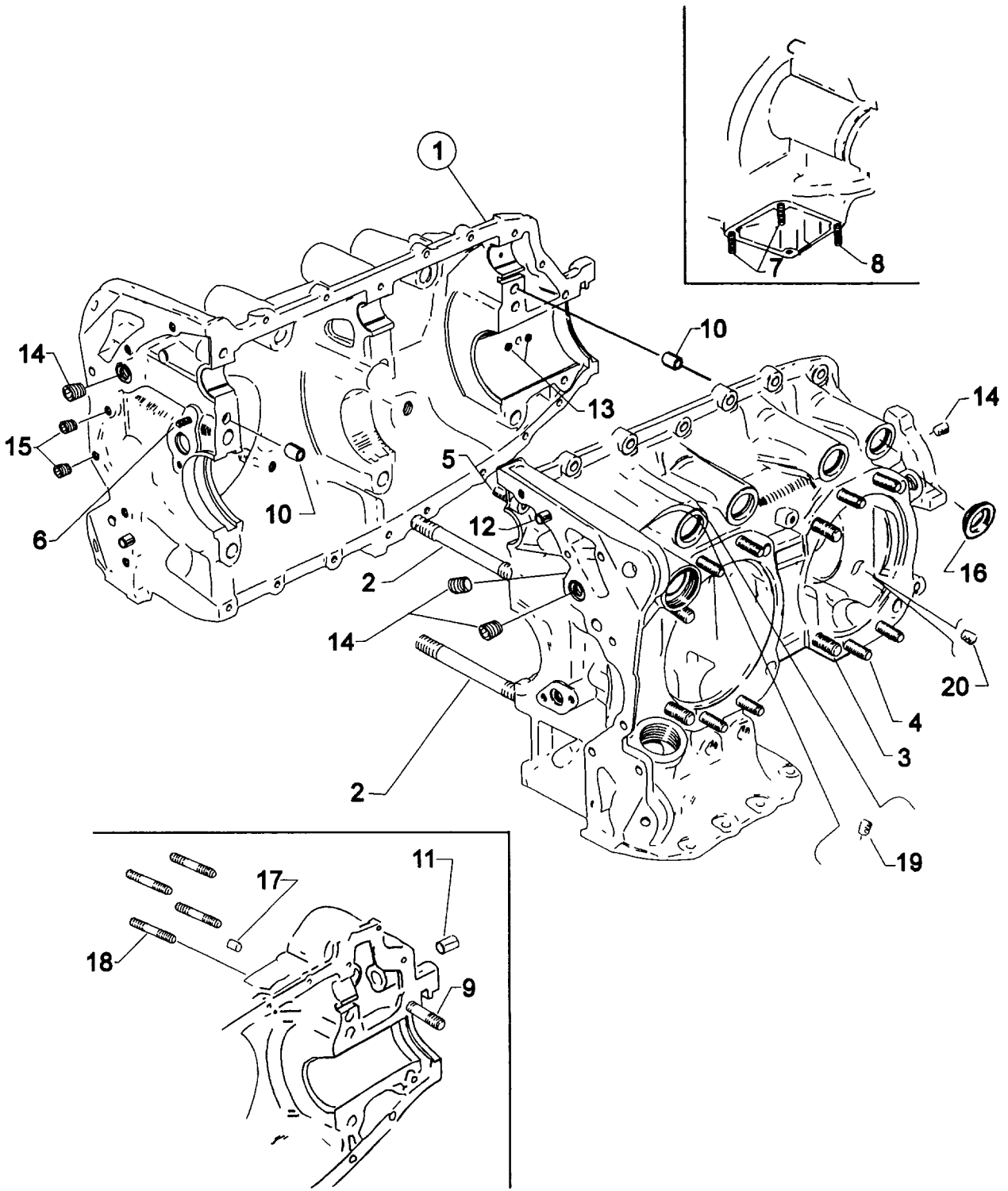
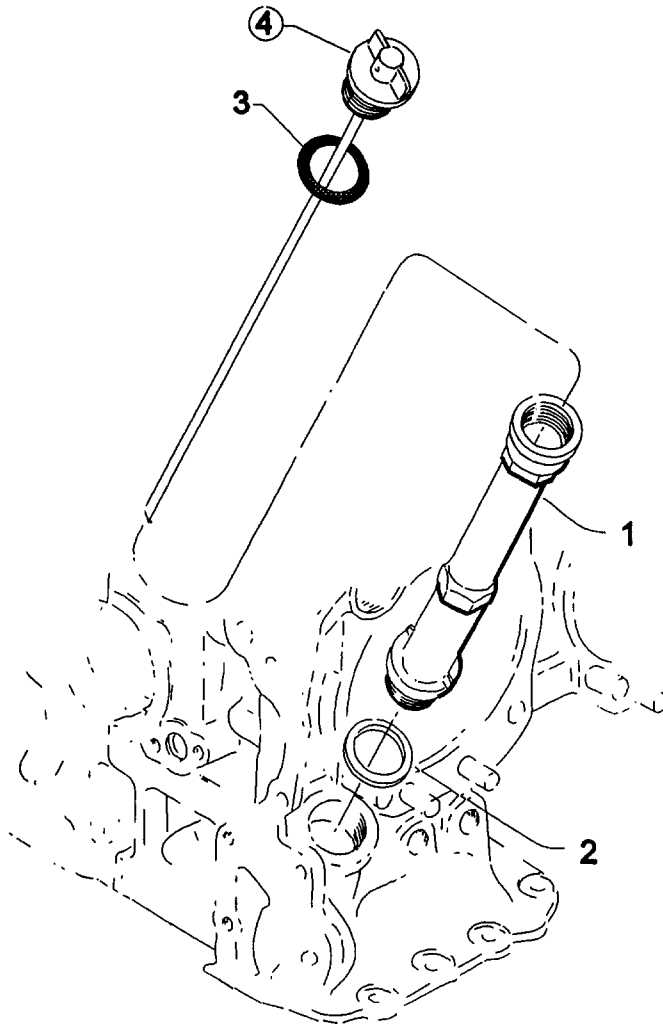


Figure 1. CRANKCASE ASSEMBLY

**CRANKCASE, CRANKSHAFT AND CAMSHAFT GROUP
OIL LEVEL GAGE ASSEMBLY**

FIG. REF.	PART NUMBER	DESCRIPTION	QTY. PER ASSY.
2			
1	75736	TUBE, Oil level gage, long	1
2	72059	GASKET, Oil level gage	1
3	74068	RING, Oil level gage seal	1
4	LW-14758	GAGE ASSEMBLY, Oil level	1

**Figure 2. OIL LEVEL GAGE ASSEMBLY**

**CRANKCASE, CRANKSHAFT AND CAMSHAFT GROUP
CAMSHAFT ASSEMBLY**

FIG. REF. 3	PART NUMBER	DESCRIPTION	QTY. PER ASSY.
1	LW-18843	CAMSHAFT ASSEMBLY	1
2	76118	SPACER, Tach. shaft centering	1
3	76121	SHAFT ASSEMBLY, Tachometer	1
4	LW-18667	PIN, 3/16 dia. x 2-21/64 long	1
5	STD-2231	RING, Internal retaining	1

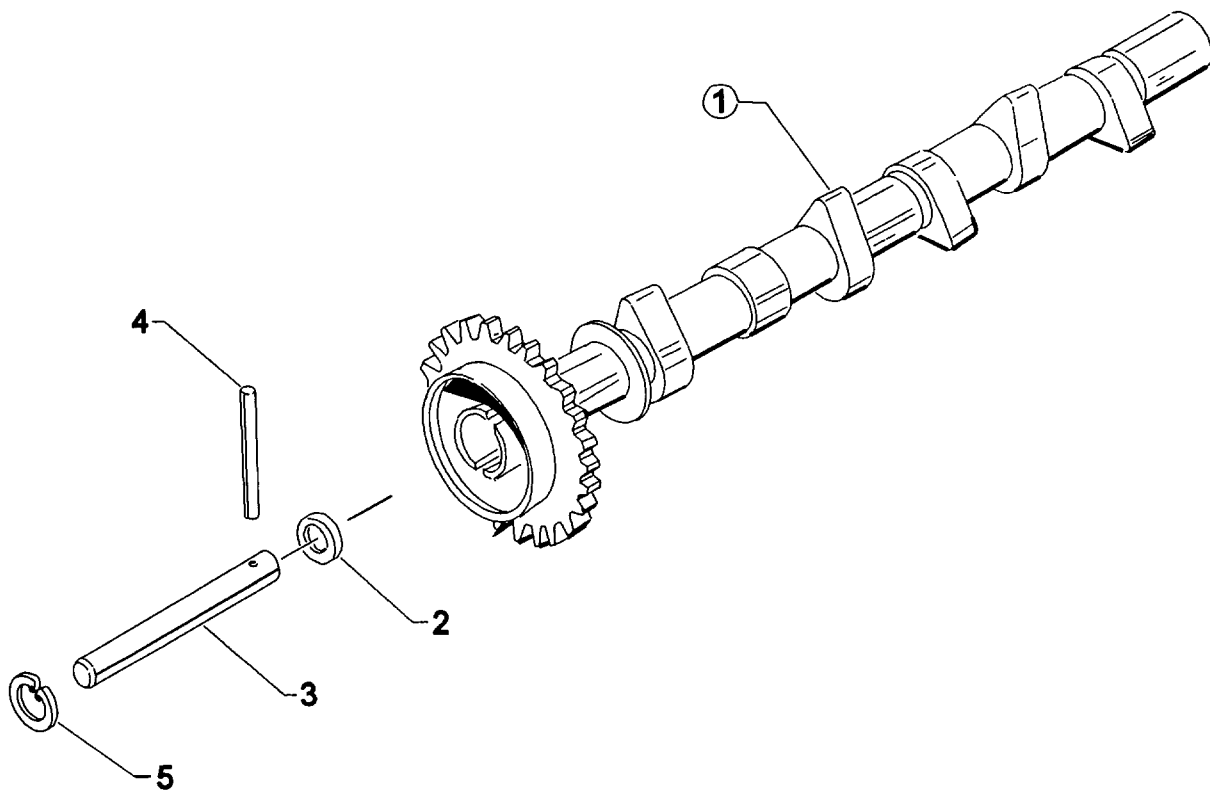


Figure 3. CAMSHAFT ASSEMBLY

**CRANKCASE, CRANKSHAFT AND CAMSHAFT GROUP
CRANKCASE RELATED PARTS**

FIG. REF. 4	PART NUMBER	DESCRIPTION	QTY. PER ASSY.
1	1028-B	BALL, 11/16 dia.	1
2	61084*	SPRING, Oil pressure relief valve	1
	LW-11713*	SPRING, Oil pressure relief valve	1
	68668*	SPRING, Oil pressure relief valve	1
	77467*	SPRING, Oil pressure relief valve	1
	LW-18085*	SPRING, Oil pressure relief valve	1
3	06E19769-1.25	GASKET, 1-1/4 I.D. x 1-1/2 O.D. X 3/32 annular	1
4	77808	VALVE ASSY., Oil pressure relief, adjustable	1
5	LW-16711	BEARING, Crankshaft	4
6	LW-13884	BEARING, Crankshaft, front	2
	18A19441	BEARING, Crankshaft, front (alternate)	2
7	LW-13792**	SEAL, Crankshaft, oil	1
8	72075	SEAL, Oil, 3/32 section x 15/32 I.D.	2
9	72091	RING, Oil seal, 23/64 I.D. x 3/32 dia. section	2
10	72877	BODY, Hydraulic tappet	8

* Select spring to give a minimum of three threads exposed on adjusting screw to allow field adjustment. Reference latest revision of Textron Lycoming Table of Limits, SSP-1776, Part I, for spring identification.

** Refer to latest edition of Textron Lycoming Service Instruction No. 1324 for installation.

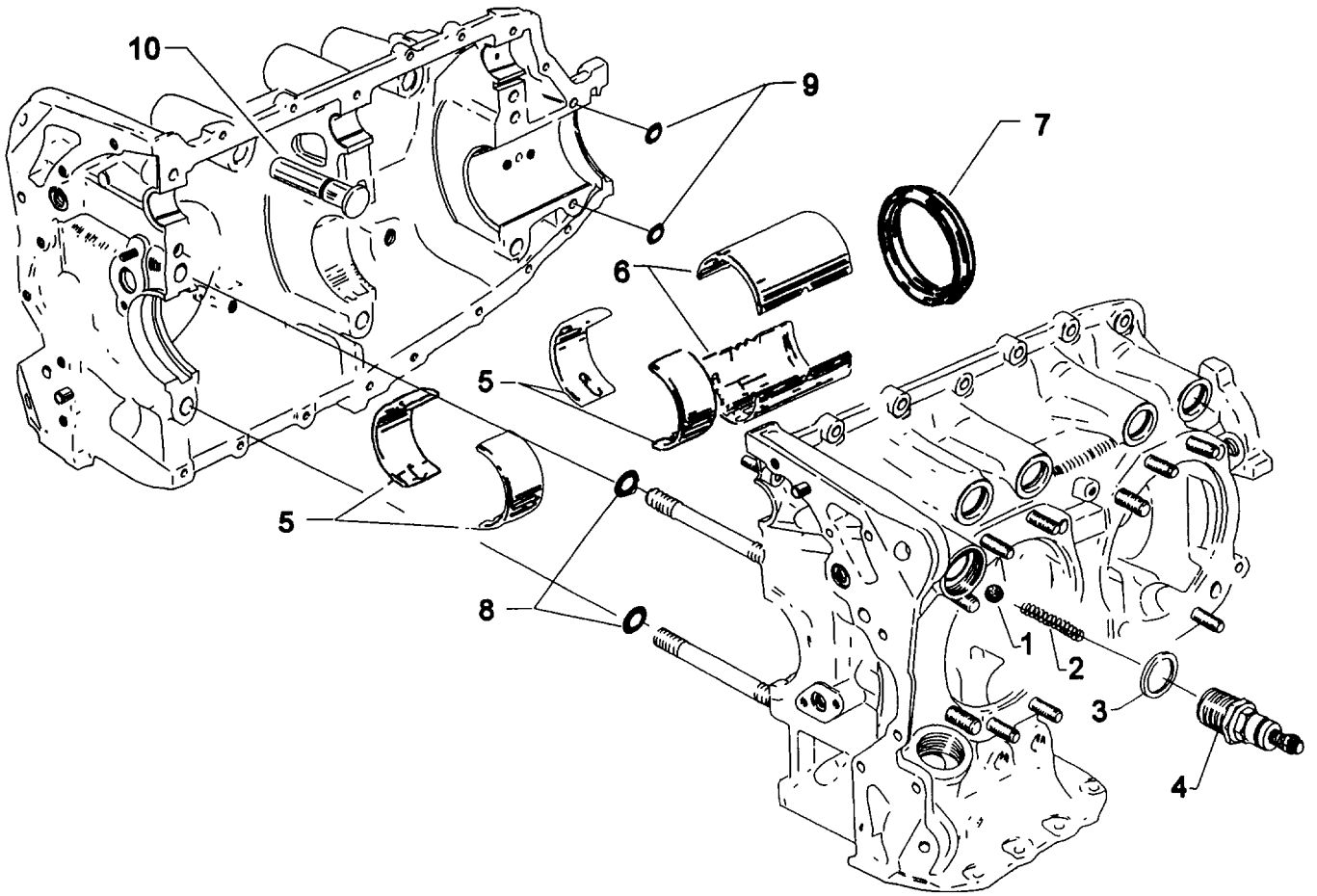


Figure 4. CRANKCASE RELATED PARTS

**CRANKCASE, CRANKSHAFT AND CAMSHAFT GROUP
CRANKSHAFT ASSEMBLY AND RELATED PARTS**

FIG. REF. 5	PART NUMBER	DESCRIPTION	QTY. PER ASSY.
1	13B27125	CRANKSHAFT AND PLUG ASSEMBLY	1
2	STD-1211	PLUG, 2.00 dia. expansion	1
3	STD-1065	DOWEL, Stepped, 5/16 and 1/4 dia. x 9/16 long	1
4	61510	PLUG, 1-3/4 O.D.	1
5	79024-S	BUSHING, Propeller flange, indexing	1
6	72155-S	BUSHING, Propeller flange, short	2
7	75656-S	BUSHING, Propeller flange, long	3
8	LW-16471	SUPPORT ASSY., Starter ring gear, 12/14 pitch	1
9	72566	GEAR, Starter ring, 12/14 pitch	1
10	13S19646*	GEAR, Crankshaft	1
11	LW-18639	LOCKPLATE, Crankshaft gear	1
12	STD-2213	SCREW, 5/16-24 x 1.00 long	1

* Refer to latest edition of Service Bulletin No. 475 for proper installation.

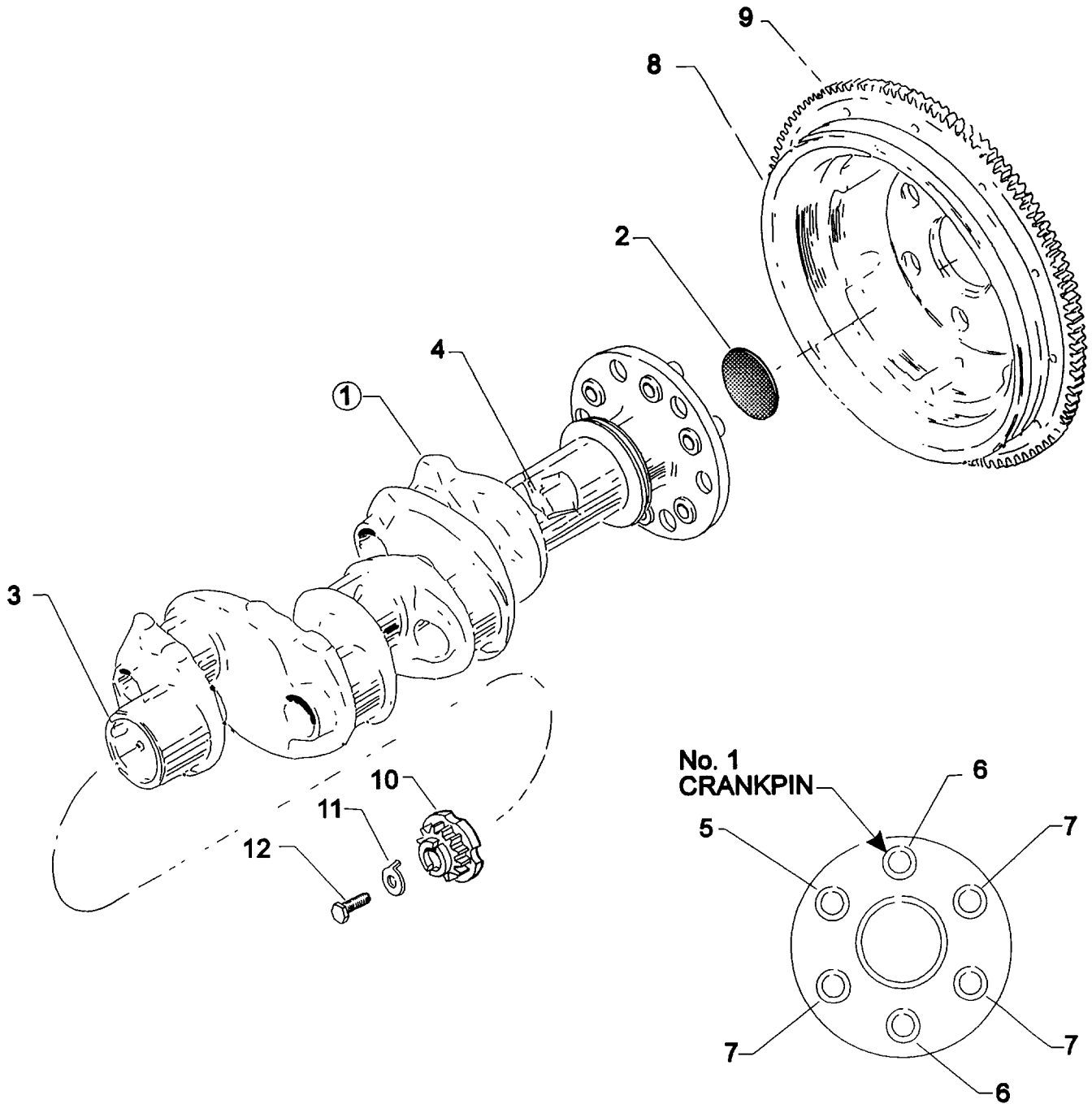


Figure 5. CRANKSHAFT ASSEMBLY AND RELATED PARTS

**CRANKCASE, CRANKSHAFT AND CAMSHAFT GROUP
PROPELLER GOVERNOR DRIVE (CRANKCASE)**

FIG. REF. 6	PART NUMBER	DESCRIPTION	QTY. PER ASSY.
1	77875	GEAR, Propeller governor driven	1
2	LW-14021	SHAFT, Propeller governor idler gear	1
3	77874	GEAR ASSY., Propeller governor idler	1
4	77872	BUSHING, Propeller governor idler gear	2
5	STD-19	DOWEL, 3/32 dia. x 7/32 long	1
6	STD-798	DOWEL, 3/32 dia. x 9/32 long	1
7	73249	WASHER, Thrust (.0585 - .0595 thick)	AR
	73250	WASHER, Thrust (.062 - .063 thick)	AR
	73251	WASHER, Thrust (.0655 - .0665 thick)	AR
	73252	WASHER, Thrust (.069 - .070 thick)	AR
	01L21418	WASHER, Thrust (.055 thick)	AR
8	AN565B1032H5*	SET SCREW, No. 10-32 x 5/16 long	1
9	70455	GASKET, 25/32 I.D. x 1-1/8 O.D. x 1/16 thick	1
10	LW-13896	PLUG, 3/4-16 hex. hd.	1
11	72053	GASKET, Governor	1
12	72378	COVER, Governor drive	1
13	STD-35	WASHER, 5/16 plain	4
14	STD-475	WASHER, 5/16 lock, internal teeth	4
15	STD-1410	NUT, 5/16-18 plain	4

* For alternate set screw and installation information, see latest edition of Textron Lycoming Service Instruction No. 1343.

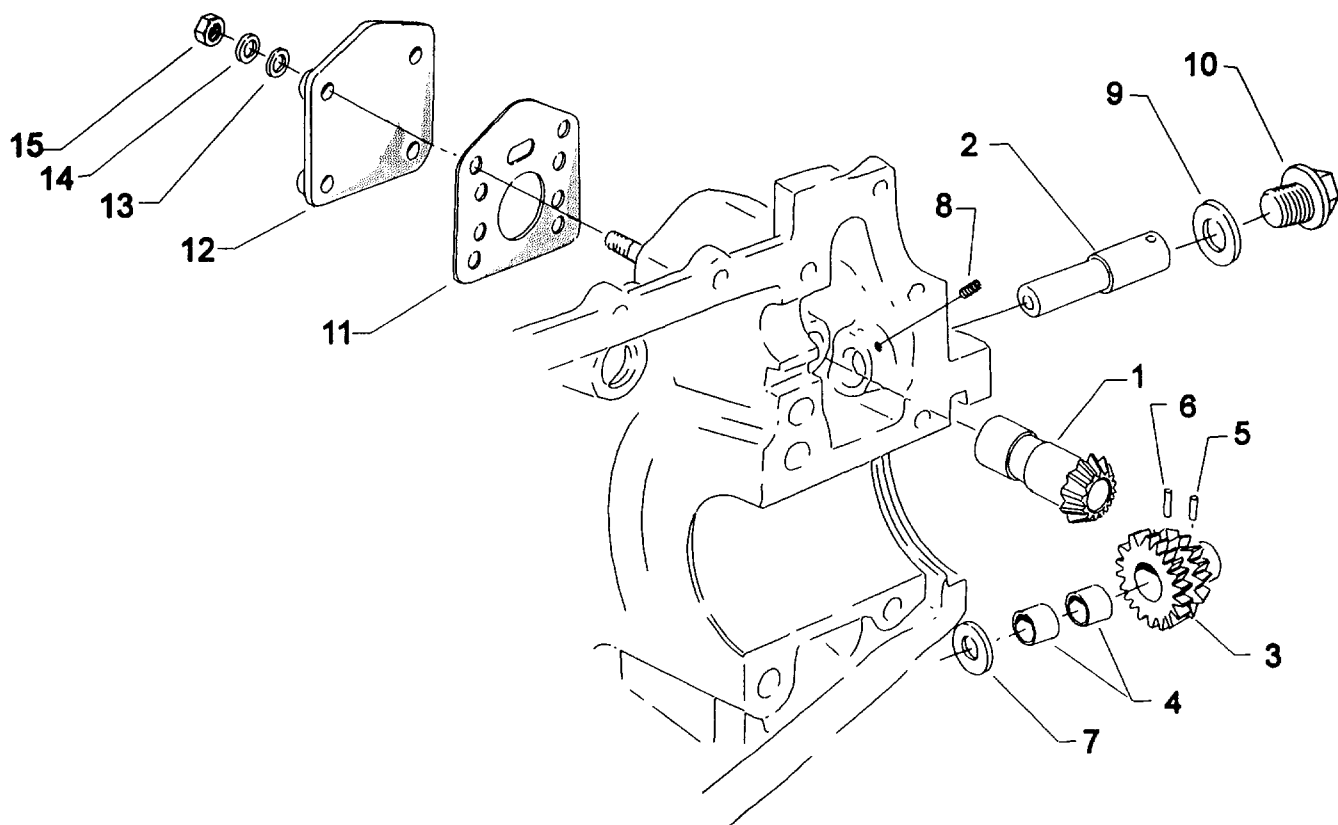


Figure 6. PROPELLER GOVERNOR DRIVE (CRANKCASE)

**CRANKCASE, CRANKSHAFT AND CAMSHAFT GROUP
CRANKSHAFT IDLER GEARS**

FIG. REF. 7	PART NUMBER	DESCRIPTION	QTY. PER ASSY.
1	LW-13796	SHAFT, Crankshaft idler gear	2
2	STD-2167	SCREW, 5/16-18 x 7/8 long, hex. hd., dr.	3
3	STD-2168	NUT, 5/16-18 NC-3 slotted shear	1
4	74996	GEAR ASSEMBLY, Crankshaft idler, plain	2
5	77309	BUSHING, Crankshaft idler gear	2

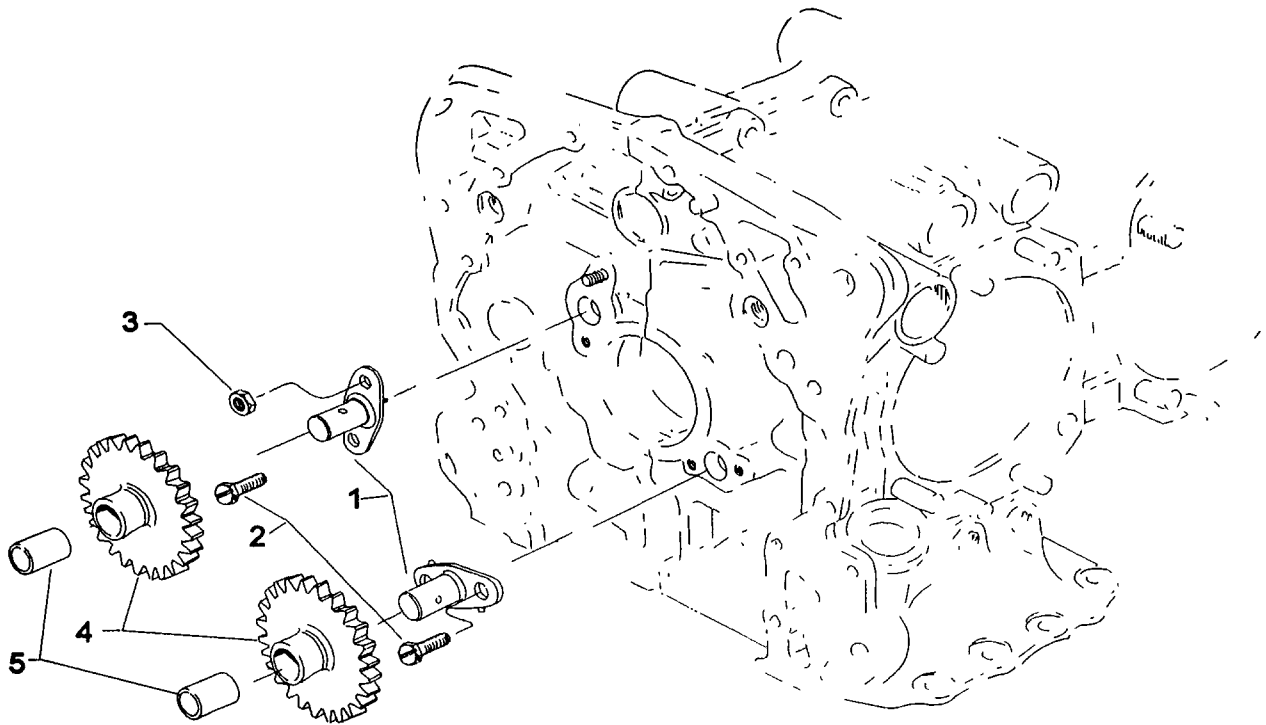


Figure 7. CRANKSHAFT IDLER GEARS

**CRANKCASE, CRANKSHAFT AND CAMSHAFT GROUP
CRANKCASE ATTACHING PARTS**

FIG. REF. 8	PART NUMBER	DESCRIPTION	QTY. PER ASSY.
1	LW-25-1.50	BOLT, 1/4-20 x 1-1/2 long, hex. hd.	8
2	STD-8	WASHER, 1/4 plain	20
3	60803	STRAP, Lifting	1
4	LW-25-1.75	BOLT, 1/4-20 x 1-3/4 long, hex. hd.	1
5	LW-25-1.13	BOLT, 1/4-20 x 1-1/8 long, hex. hd.	4
6	STD-160	WASHER, 1/4 lock, internal teeth	12
7	STD-1411	NUT, 1/4-20 plain	9
8	LW-25S1.50	BOLT, 1/4-20 x 1-1/2 long, hex. hd., dr. end	3
9	STD-8	WASHER, 1/4 plain (Max. 9)	AR
10	STD-1409	NUT, 1/4-20 slotted shear	3
11	STD-33*	WASHER, 3/8 plain, 1/16 thick	AR
12	AN960-616L*	WASHER, 3/8 plain, 1/32 thick	AR
13	STD-872	NUT, 3/8-24 slotted	1
14	AN6-34A	BOLT, 3/8-24 x 3-37/64 long, hex. hd.	2
15	STD-33	WASHER, 3/8 plain	2
16	STD-678	WASHER, 3/8 lock, internal teeth	2
17	STD-596	NUT, 3/8-24 plain	2
18	76220	STUD, 1/2-20 x 10-11/16 long	4

* Use a maximum of 3 total for items no. 11 and no. 12.

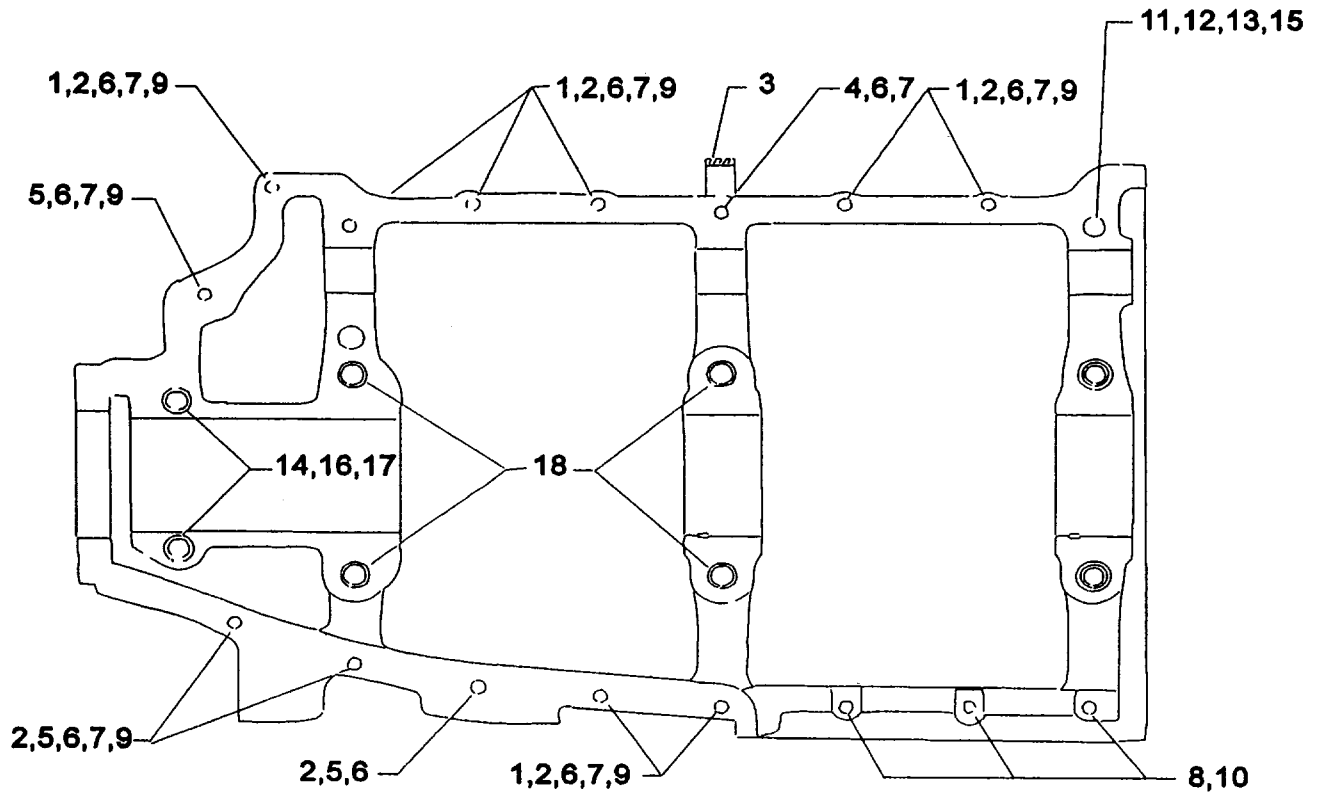


Figure 8. CRANKCASE ATTACHING PARTS

SECTION

2

**ACCESSORY
HOUSING AND
RELATED PARTS**

**ACCESSORY HOUSING AND RELATED PARTS
ACCESSORY HOUSING ASSEMBLY**

FIG. REF. 9	PART NUMBER	DESCRIPTION	QTY. PER ASSY.
1	73818	GASKET, Accessory housing	1
2	21A21533-04	HOUSING ASSY., Accessory	1
3	25C-22	STUD, 1/4-20 x 2-3/4 long	4
4	31C-12	STUD, 5/16-18 x 1-1/2 long	6
5	31C-19	STUD, 5/16-18 x 2-3/8 long	2
6	31CD-17	STUD, 5/16-18 x 2-1/8 long, drilled	3
7	1102	PLUG, 1/8 pipe, Allen	4
8	STD-784	PLUG, 3/8 pipe, Allen	1

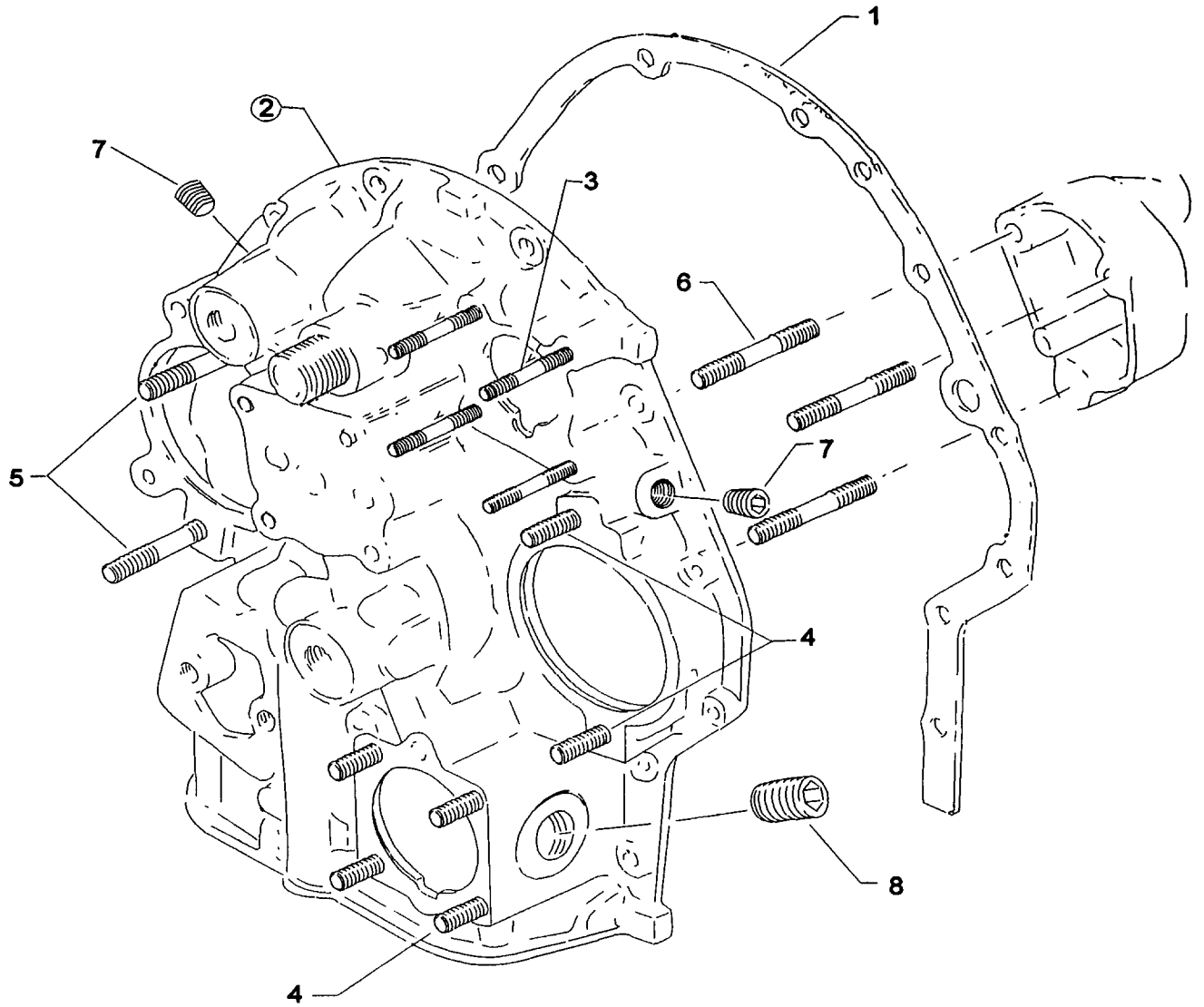


Figure 9. ACCESSORY HOUSING ASSEMBLY

**ACCESSORY HOUSING AND RELATED PARTS
OIL PUMP AND ACCESSORY HOUSING ATTACHING PARTS**

FIG. REF. 10	PART NUMBER	DESCRIPTION	QTY. PER ASSY.
1	78531	BODY, Oil pump.	1
2	05K19423-S*	KIT, Oil pump impeller	1
3	61174	SHAFT, Oil pump drive	1
4	STD-35	WASHER, 5/16 plain	3
5	STD-1420	NUT, 5/16-18 slotted	3
6	LW-14260	SEAL, Tachometer drive, oil	1
7	STD-8	WASHER, 1/4 plain	12
8	STD-160	WASHER, 1/4 lock, internal teeth	12
9	LW-25-0.94	BOLT, 1/4-20 x 15/16 long, hex. hd.	9
10	LW-25-1.13	BOLT, 1/4-20 x 1-1/8 long, hex. hd.	1
11	LW-25-1.50	BOLT, 1/4-20 x 1-1/2 long, hex. hd.	2

* Refer to latest edition of Textron Lycoming Service Bulletin No. 456.

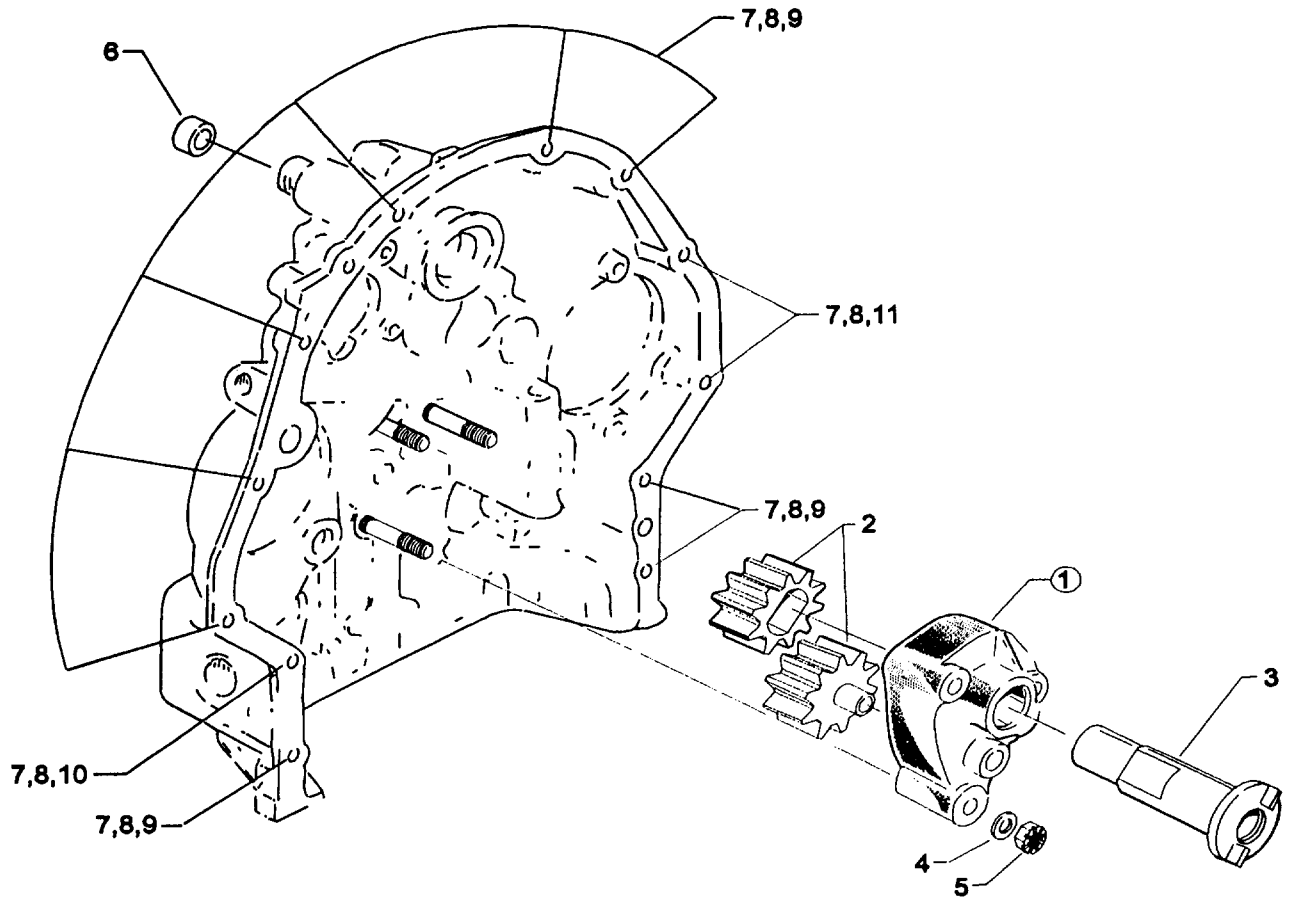


Figure 10. OIL PUMP AND ACCESSORY HOUSING ATTACHING PARTS

**ACCESSORY HOUSING AND RELATED PARTS
FUEL PUMP AND PROP. GOVERNOR DRIVE COVERS**

FIG. REF. 11	PART NUMBER	DESCRIPTION	QTY. PER ASSY.
1	60096	GASKET, Fuel pump	1
2	65098	COVER, Fuel pump	1
3	STD-33	WASHER, 3/8 plain	2
4	LW-38-0.75	BOLT, 3/8-16 x 3/4 long, hex. hd.	2
5	STD-678	WASHER, Lock	2
6	69551	GASKET, Accessory drive adapter	1
7	69106	COVER, Governor drive adapter pad	1
8	STD-35	WASHER, 5/16 plain	4
9	STD-475	WASHER, 5/16 lock, internal teeth	4
10	STD-1410	NUT, 5/16-18 plain	4

**ACCESSORY HOUSING AND RELATED PARTS
VACUUM PUMP DRIVE AND COVER**

FIG. REF. 12	PART NUMBER	DESCRIPTION	QTY. PER ASSY.
1	61183	GASKET, Accessory adapter	1
2	61098	ADAPTER ASSY., Vacuum pump	1
3	STD-1774	PIN, 1/8 dia. x 1/4 long	1
4	06A19956	OIL SEAL, 7/8 I.D. x 1-1/2 O.D. x 5/16 wide	1
5	72970	GEAR ASSY., Vacuum pump driven	1
6	71596	WASHER, Accessory driven gear	1
7	8313	GASKET, Vacuum pump	1
8	60430	COVER, Vacuum pump	1
9	STD-8	WASHER, 1/4 plain	4
10	STD-160	WASHER, 1/4 lock, internal teeth	4
11	STD-1411	NUT, 1/4-20 plain	4

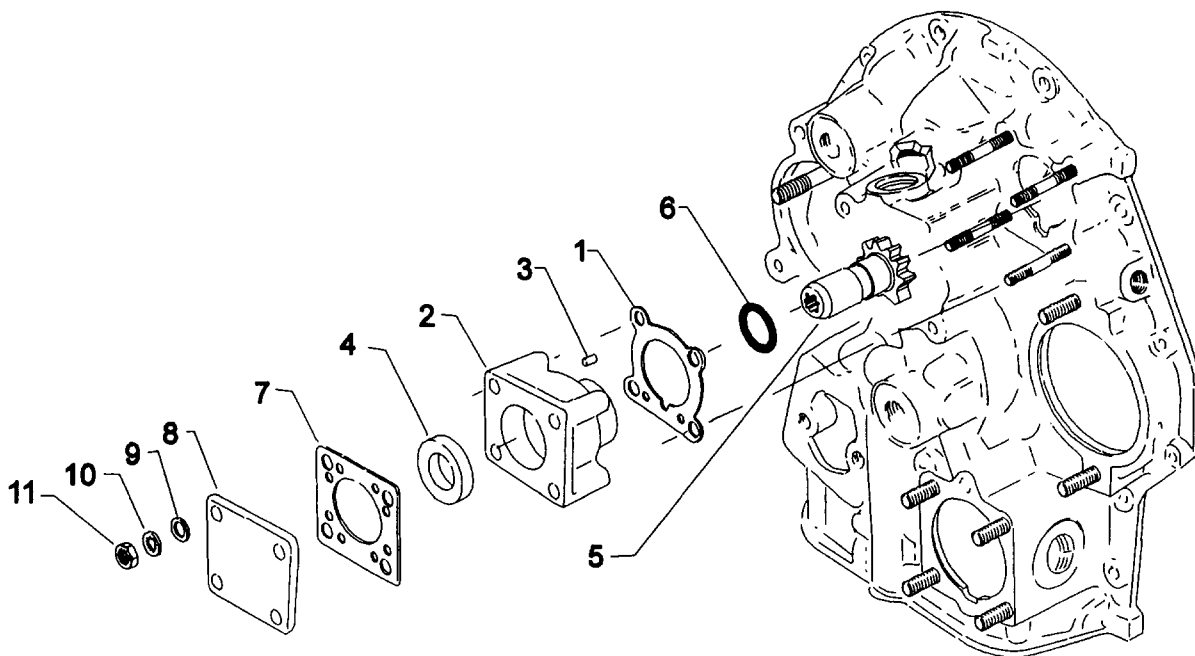


Figure 12. VACUUM PUMP DRIVE AND COVER

**ACCESSORY HOUSING AND RELATED PARTS
OIL PRESSURE SCREEN AND OIL COOLER BYPASS VALVE**

FIG. REF. 13	PART NUMBER	DESCRIPTION	QTY. PER ASSY.
1	06E19769-0.63	GASKET, 7/8 O.D. x 5/8 I.D. x 3/32 annular	1
2	69675	CONNECTOR, Accessory hsg. to oil cooler inlet hose	1
3	STD-784	PLUG, 3/8 pipe, Allen	2
4	71140	FITTING, Breather (assemble in accy. hsg.)	1
5	62817	SCREEN ASSY., Oil pressure	1
6	61173	GASKET, Oil pressure housing	1
7	69510	HOUSING, Thermostatic valve and oil pressure screen	1
8	06E19769-0.63	GASKET, 7/8 O.D. x 5/8 I.D. x 3/32 annular	1
9	STD-8	WASHER, 1/4 plain	4
10	STD-1856	SCREW, 1/4-20 x 31/32-1.00 long, hex. hd., slotted	4
11	53E19600	VALVE ASSY., Temp. control oil cooler bypass	1
12	76510	GASKET, Valve assembly	1

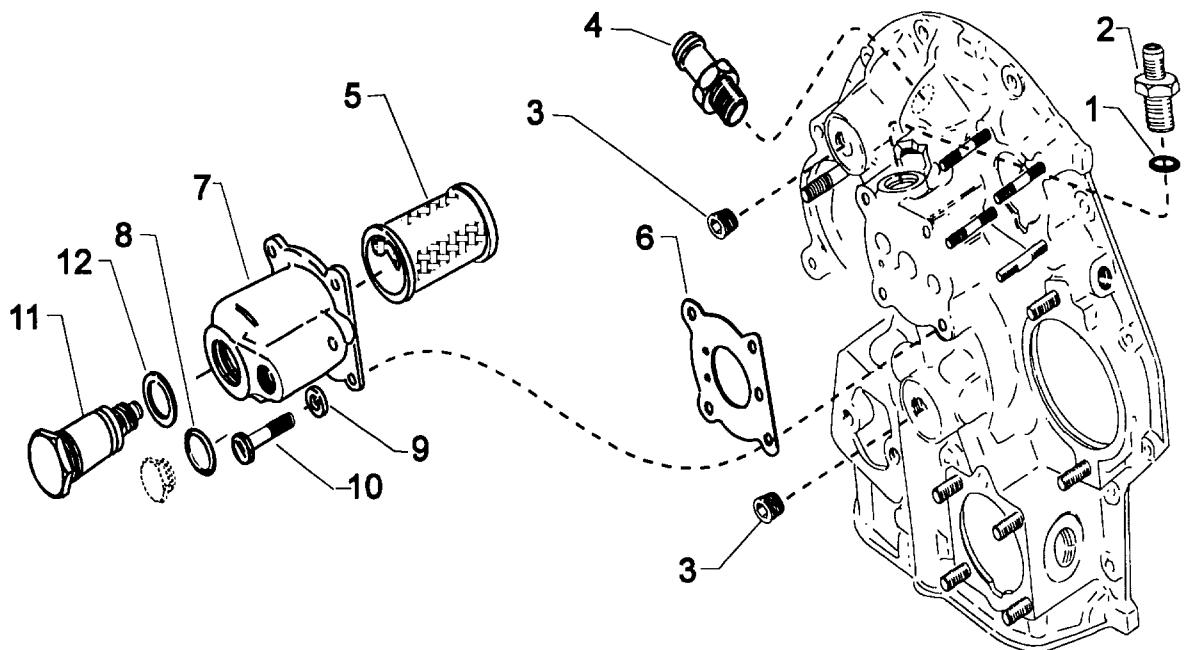


Figure 13. OIL PRESSURE SCREEN AND OIL COOLER BYPASS VALVE

SECTION

3

**CYLINDER, PISTON
AND VALVE TRAIN**

**CYLINDER, PISTON AND VALVE TRAIN
CONNECTING RODS, PISTONS AND RING ASSEMBLIES**

FIG. REF. 14	PART NUMBER	DESCRIPTION	QTY. PER ASSY.
1	LW-11750	CONNECTING ROD ASSEMBLY	4
2	LW-13923	BUSHING, Connecting rod, upper	4
3	75061	BOLT, Connecting rod	8
4	LW-12186	NUT, Connecting rod bolt	8
5	LW-13521	BEARING, Connecting rod	8
6	75089	PISTON, Compression ratio, 8.50:1	4
7	LW-14077	PIN, Piston	4
8	LW-11775	PLUG, Piston pin	8
9	74241	RING, Piston compression	4
10	73857	RING, Piston, oil regulating, expander type	4

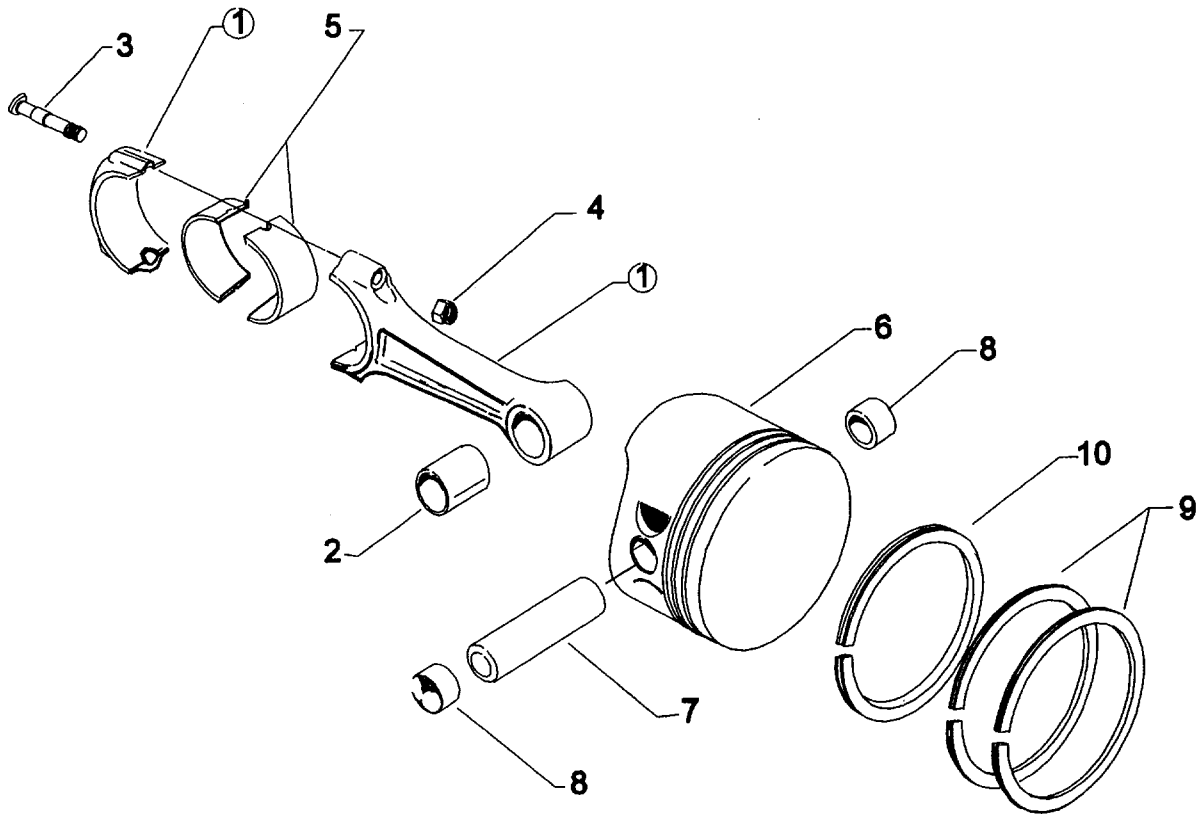


Figure 14. CONNECTING RODS, PISTONS AND RING ASSEMBLIES

**CYLINDER, PISTON AND VALVE TRAIN
CYLINDER ASSEMBLY**

FIG. REF. 15	PART NUMBER	DESCRIPTION	QTY. PER ASSY.
1	LW-12427	CYLINDER AND HEAD ASSY., Nitrided	4
2	72057	SEAT, Intake valve	4
3	72058	SEAT, Exhaust valve	4
4	61681*	GUIDE, Valve, intake, flanged	4
5	74230*	GUIDE, Valve, exhaust, flanged	4
6	66796	INSERT, Spark plug	8
7	STD-1872	INSERT, 1/8-27 Heli-coil taper pipe thread	8
8	STD-1353	INSERT, No. 10-24 x 3/8	4
9	31C-12	STUD, 5/16-18 x 1.50 long	8
10	25C-8	STUD, 1/4-20 x 2.00 long	4
11	MS20823-6D	ELBOW, 45°, 3/8 flared tube	4
12	66610	BUSHING, Rocker shaft	16
13	1102**	PLUG, 1/8-27 NPT, Allen head	8

* Refer to latest edition of Textron Lycoming Service Instruction No. 1256 for application.

** Assemble in cylinder head when no priming lines.

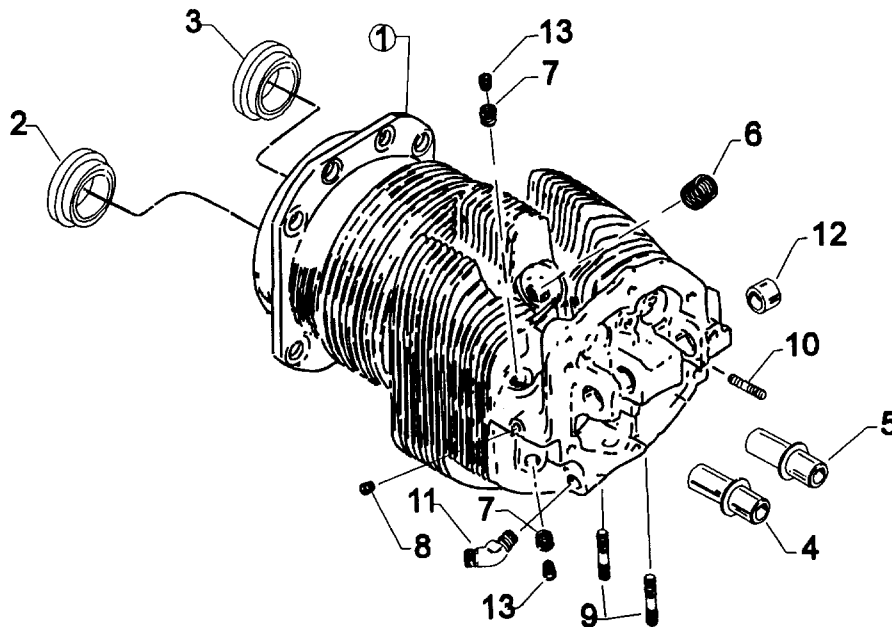


Figure 15. CYLINDER ASSEMBLY

**CYLINDER, PISTON AND VALVE TRAIN
CYLINDER RELATED PARTS**

FIG. REF. 16	PART NUMBER	DESCRIPTION	QTY. PER ASSY.
1	73434*	ROD ASSY., Push	AR
	15F19957-35*	ROD ASSY., Push	AR
	15F19957-36*	ROD ASSY., Push	AR
	73437*	ROD ASSY., Push	AR
2	17F19357**	ROCKER ASSY., Valve	8
3	74637	BUSHING, Valve rocker	8
4	LW-13790	SHAFT, Valve rocker	4
5	LW-12892	THRUST BUTTON, Rocker shaft	8
6	75906	GASKET, Rocker box cover	4
7	61247	COVER, Rocker box	4
8	STD-1925	SCREW, 1/4-20 x 5/8 long, pan. head, self-locking	24
9	71481	RING, Oil seal, 3/32 dia. x 4-27/32 I.D.	4
10	74887	SPACER, 33/64 I.D. x 7/8 O.D. x 3/8 thick	2
11	383-B	NUT, 3/8-24 plain	16
12	STD-2090	NUT, 1/2-20 plain	18
13	STD-35	WASHER, 5/16 plain	8
14	STD-475	WASHER, 5/16 lock, internal teeth	8
15	STD-1410	NUT, 5/16-18 plain	8

* See latest edition of Textron Lycoming Service Instruction No. 1060 for complete push rod application.

** Due to the size of the area where the part number is stamped, the last five digits may be all that is shown (19357).

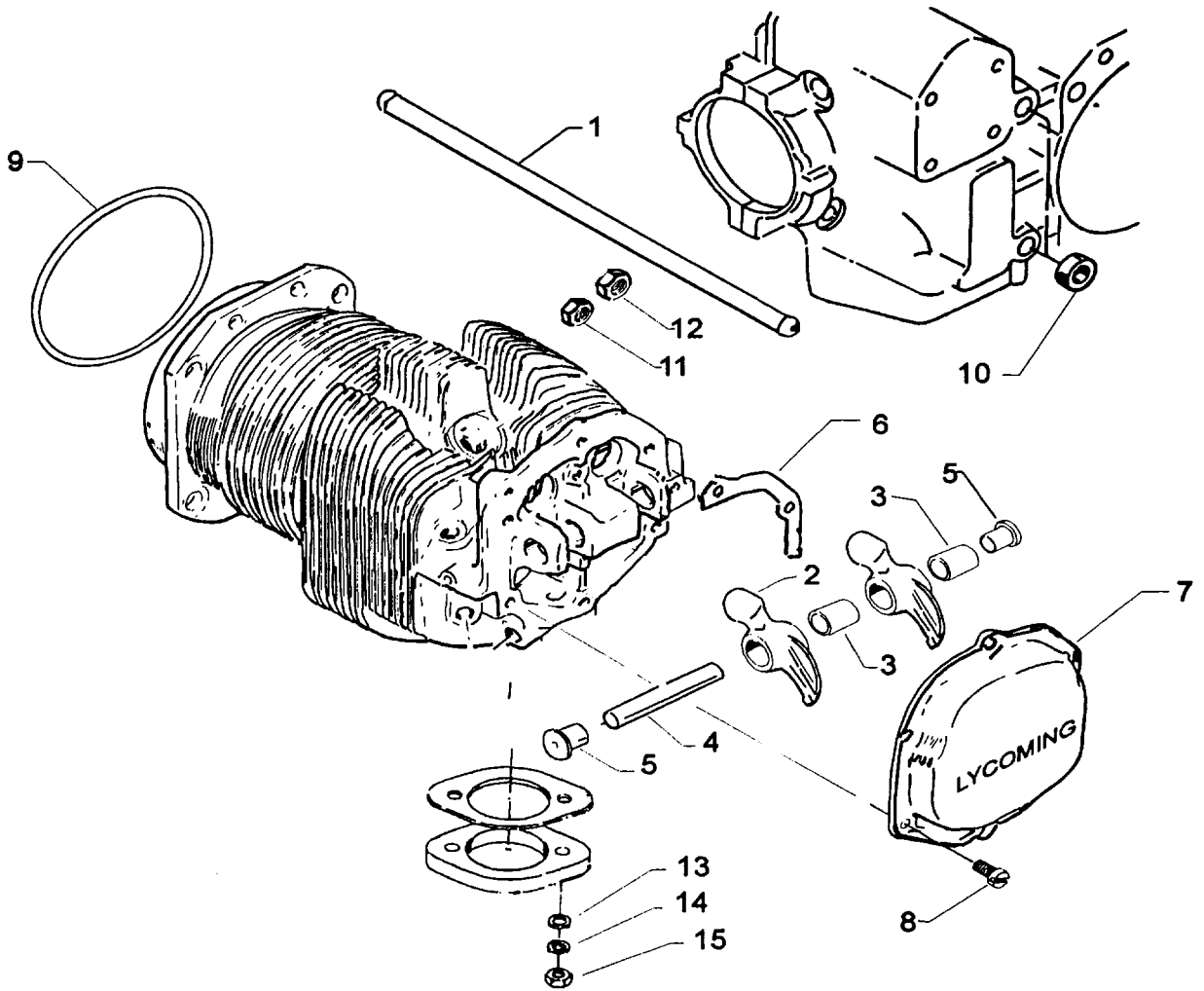


Figure 16. CYLINDER RELATED PARTS

CYLINDER, PISTON AND VALVE TRAIN
VALVE ASSEMBLY

FIG. REF. 17	PART NUMBER	DESCRIPTION	QTY. PER ASSY.
1	73938	VALVE, Intake	4
2	LW-19001	VALVE, Exhaust (rotator type)	4
3	LW-11795	SPRING, Valve, inner	8
4	LW-11800	SPRING, Valve, outer	8
5	65441	SEAT, Valve spring, lower, intake	4
6	LW-13323	SEAT, Valve spring, lower	4
7	LW-10077	SEAT, Valve spring, upper, intake	4
8	LW-16475	SEAT, Valve spring, upper, exhaust (rotator type)	4
9	60009	KEY, Valve, intake	8
10	17C21191	KEY, Valve, exhaust (rotator type)	8
11	17C19386	CAP, Valve stem, exhaust (rotator type)	4
12	78290	PLUNGER ASSY., Hydraulic tappet	8
13	15B21319	SOCKET, Push rod, hydraulic tappet	8
14	LW-11485	TUBE, Push rod shroud	8
15	LW-14995	SPRING, Shroud tube	4
16	LW-12272	LOCKPLATE, Shroud tube	4
17	STD-1411	NUT, 1/4-20 plain	4
18	LW-18661	SEAL, Shroud tube	8
19	70310	SEAL, Shroud tube	8

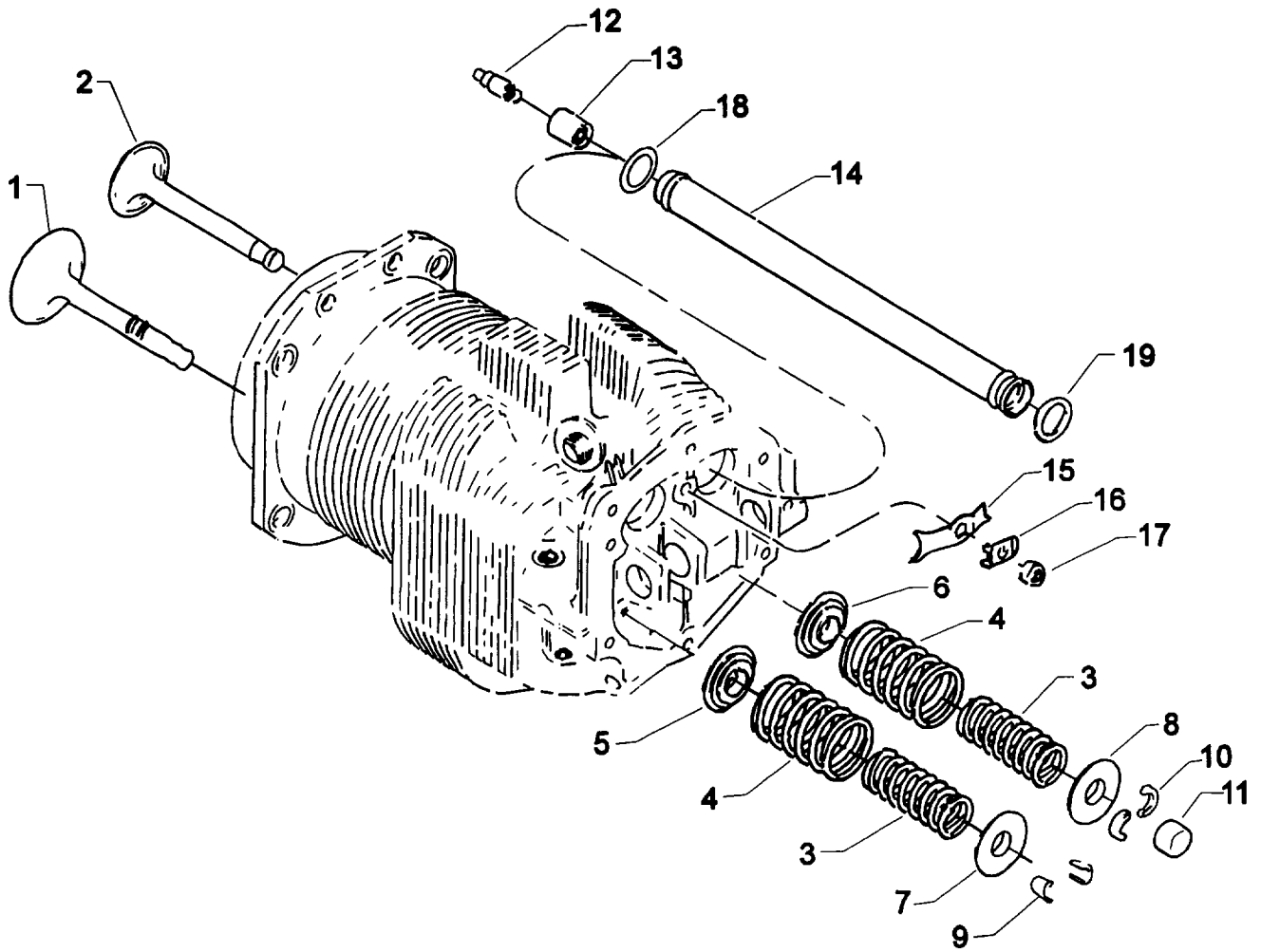


Figure 17. VALVE ASSEMBLY

**CYLINDER, PISTON AND VALVE TRAIN
CYLINDER HEAD DRAIN TUBES AND INTERCYLINDER COOLING BAFFLES**

FIG. REF. 18	PART NUMBER	DESCRIPTION	QTY. PER ASSY.
1	STD-684	NIPPLE, Straight, 3/8 I.D. hose	4
2	STD-1821	HOSE, 3/8 I.D. x 2-1/2 long	4
3	LW-15592-5-05	CLAMP, Hose	8
4	68759	TUBE ASSY., Oil drain, cyl. no. 1	1
5	68760	TUBE ASSY., Oil drain, cyl. no. 2	1
6	68761	TUBE ASSY., Oil drain, cyl. nos. 3 & 4	2
7	75339	BAFFLE ASSY., Intercylinder	2
8	71611	RETAINER, Intercylinder baffle	2
9	71610	HOOK, Intercylinder baffle retainer	2

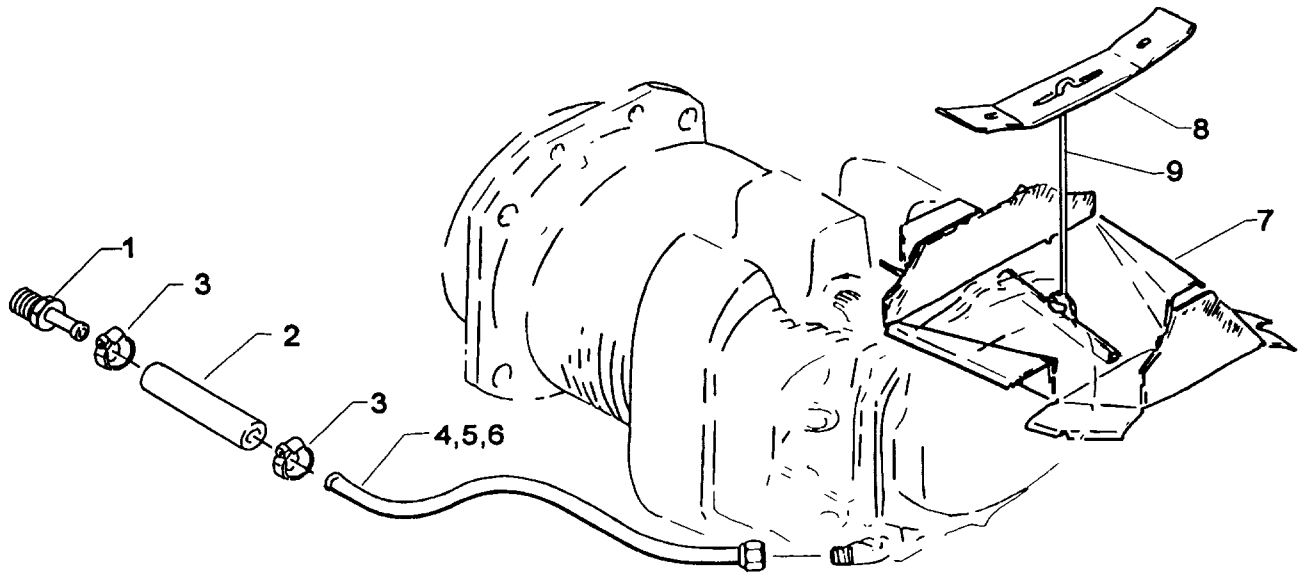


Figure 18. CYLINDER HEAD DRAIN TUBES AND INTERCYLINDER COOLING BAFFLES

SECTION

4

IGNITION SYSTEM

**IGNITION SYSTEM
MAGNETOS, DRIVES, HARNESSES AND SPARK PLUGS**

FIG. REF. 19	PART NUMBER	DESCRIPTION	QTY. PER ASSY.
1	61665	GEAR, Magneto, impulse coupling	1
2	68C19622	GEAR, Magneto	1
3	62224	GASKET, Magneto adapter	1
4	LW-12706	ADAPTER, Magneto, impulse coupling	1
5	LW-12681	GASKET, Magneto	2
6	66GP-OSANN	MAGNETO, Right (Slick Model 4370)	1
	66GC25SFNN	MAGNETO, Left (Slick Model 4373)	1
7	67P20428	HARNESS ASSY., Ignition, right	1
	67P20429	HARNESS ASSY., Ignition, left	1
8	66M21195	CLAMP, Magneto	4
9	STD-475	WASHER, 5/16 lock, internal teeth	4
10	STD-1410	NUT, 5/16-18 plain	4
11	76734	ZIP STRAP	4
12	1182-J3*	SPARK PLUG (Champion REM-38E) Shielded	8
**	01P19762-1-1	BAG, Magneto harness attaching	1

* Item no. 12 spark plugs are used in current production only. Additional spark plugs are available for this engine. See latest edition of Textron Lycoming Service Instruction No. 1042 for complete listing of all approved spark plugs.

** See page 4-2 for a breakdown of individual parts contained in the magneto and harness attaching parts bag. These parts to be attached by customer per engine line drawing included in each bag.

P/N 01P19762-1-1

Part No.	Part Name	Qty.
LW-18288-25-25	CLIP, One wire	2
LW-14080	CLIP, Two wire	3
STD-8	WASHER, 1/4 plain	8
STD-1874	SCREW, 1/4 lock (rocker box)	8
78734	ZIP STRAP	8
LW-18288-25-50	CLIP, Four wire	1
STD-896	WASHER, 1/4 thin	4
AN500-416-18	SCREW, 1/4 x 1-1/8 long	3
LW-M-2375	PLATE, Baffle	2

ATTACHING HARDWARE

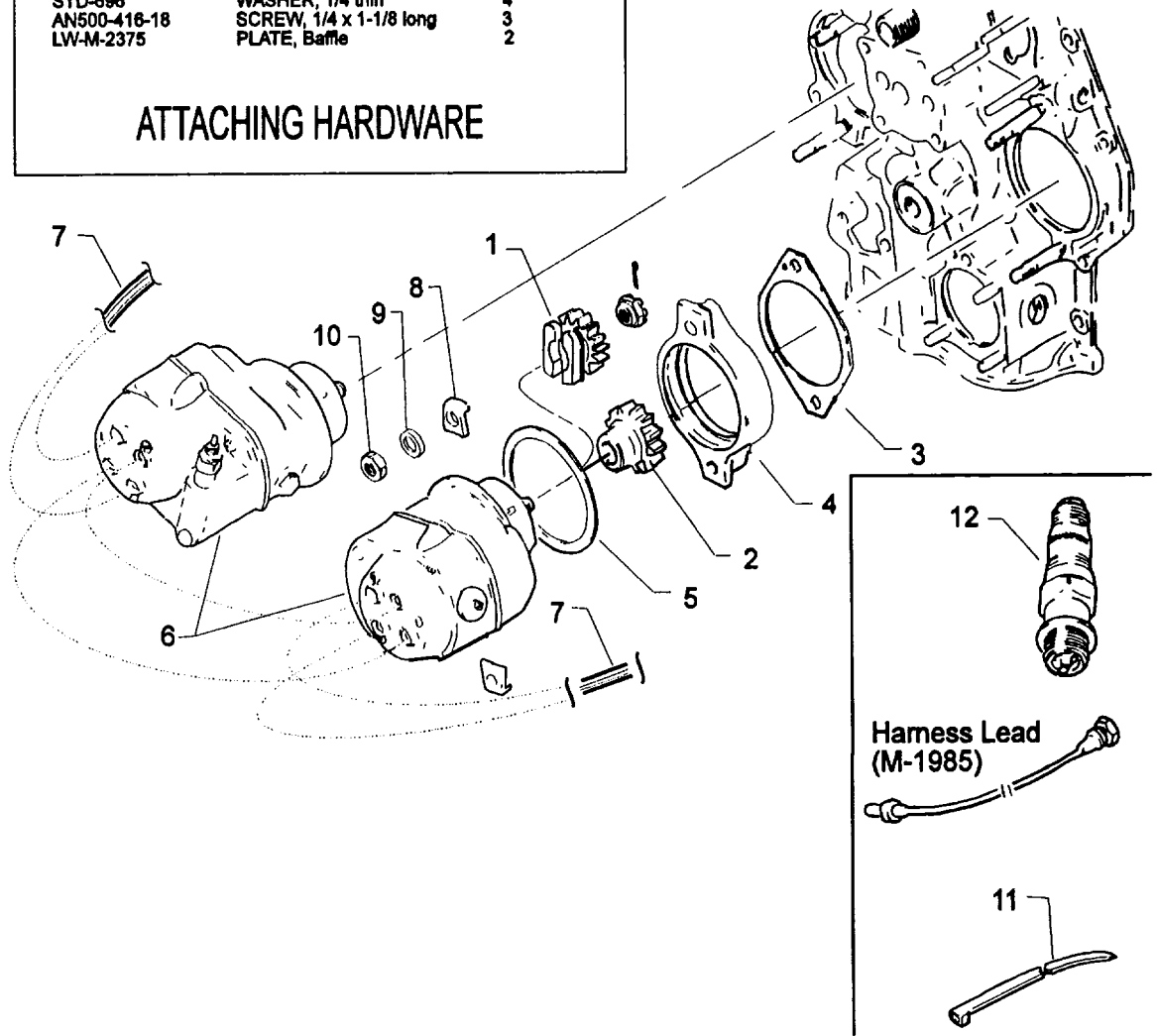


Figure 19. MAGNETOS, DRIVES, HARNESSES AND SPARK PLUGS

SECTION

5

**ELECTRICAL
COMPONENTS**

**ELECTRICAL COMPONENTS
ALTERNATOR ASSEMBLY AND BELT**

FIG. REF. 20	PART NUMBER	DESCRIPTION	QTY. PER ASSY.
1	LW-14371	ALTERNATOR ASSEMBLY	1
2	36B19484	PULLEY, Alternator	1
3	37A19773-376	BELT, Alternator drive, 3/8 wide	1

NOTE

See latest edition of Textron Lycoming Service Instruction No. 1154 for complete listing of FAA approved starters, generators, alternators, regulators and relays.

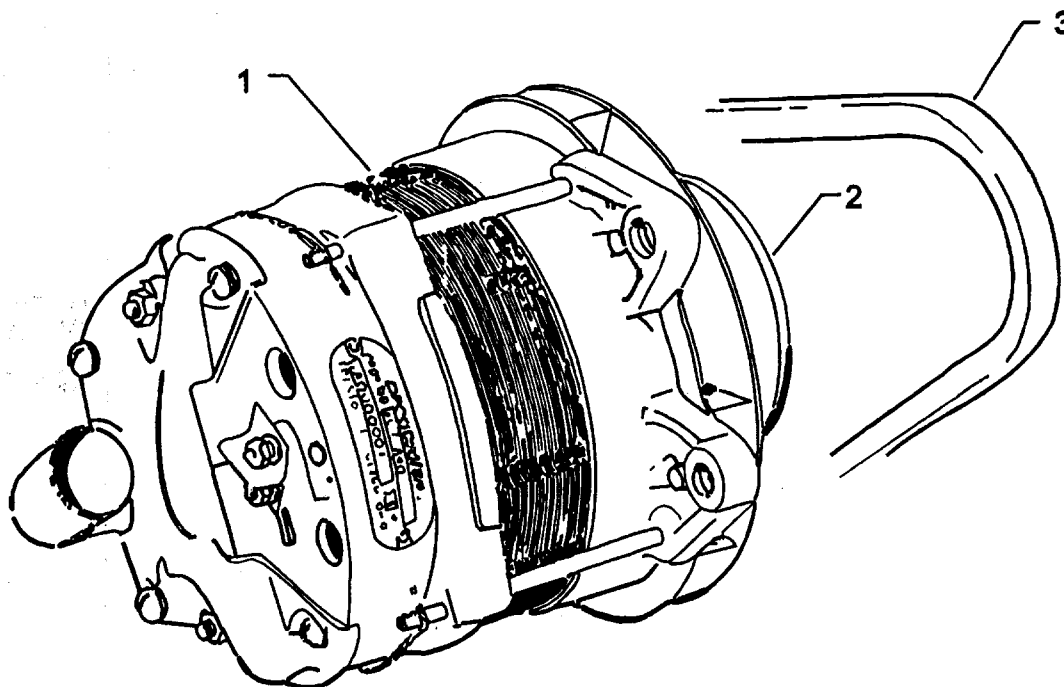


Figure 20. ALTERNATOR ASSEMBLY AND BELT

**ELECTRICAL COMPONENTS
STARTER MOTOR AND ATTACHING PARTS**

FIG. REF.	PART NUMBER	DESCRIPTION	QTY. PER ASSY.
21			
1	LW-15571	STARTER, 12 volt (3.38:1 internal reduction) MZ-4222	1
2	STD-35	WASHER, 5/16 plain	4
3	STD-475	WASHER, 5/16 lock, internal teeth	4
4	LW-31-1.16	BOLT, 5/16-18 x 1-5/32 long, hex. hd.	1
5	STD-1410	NUT, 5/16-18 plain	3

NOTE

See latest edition of Textron Lycoming Service Instruction No. 1154 for complete listing of FAA approved starters, generators, alternators, regulators and relays.

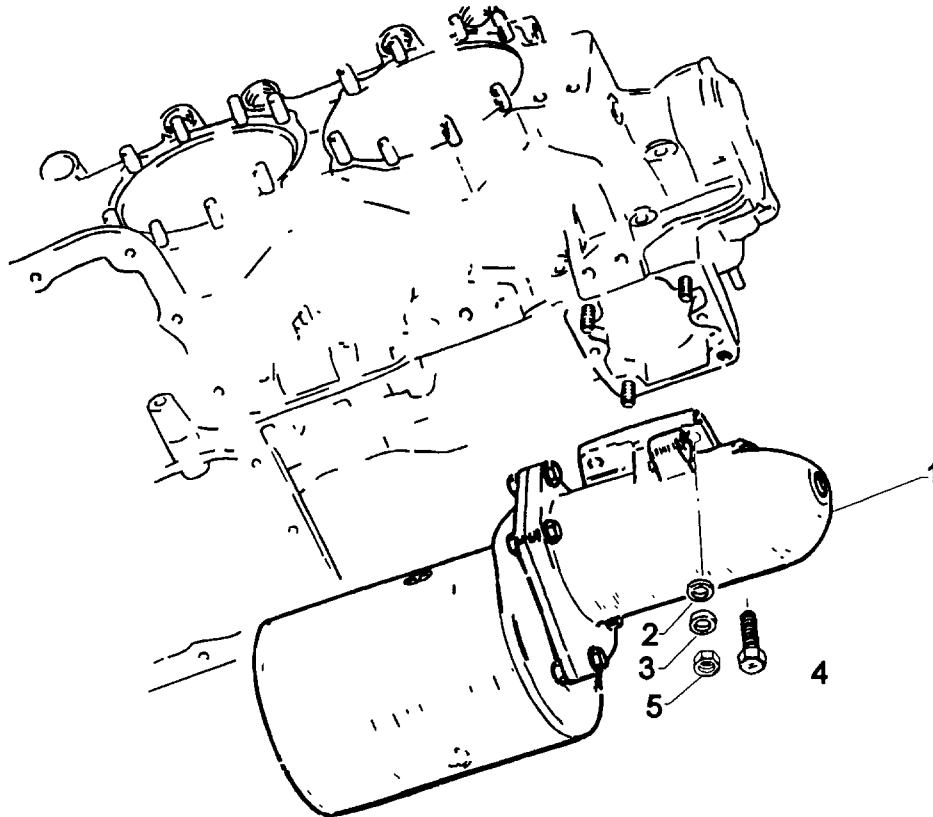


Figure 21. STARTER MOTOR AND ATTACHING PARTS

**ELECTRICAL COMPONENTS
ALTERNATOR MOUNTING AND ATTACHING PARTS**

FIG. REF. 22	PART NUMBER	DESCRIPTION	QTY. PER ASSY.
1	07A19474	BRACKET, Alternator	1
2	73383	LOCKPLATE, 5/16 bolt x 1.00 spacing	1
3	LW-31-0.94	BOLT, 5/16-18 x 15/16 long, hex. hd.	2
4	75380	LINK, Alternator adjusting	1
5	STD-35	WASHER, 5/16 plain	1
6	LW-31H0.75	BOLT, 5/16-18 x 3/4 long, hex. hd., dr.	1
7	STD-1727	WASHER, Plain, 3/4 O.D. x 11/32 I.D. x 1/8 thick	1
8	LW-31H0.75	BOLT, 5/16-18 x 3/4 long, hex. hd., dr.	1
9	74323	STRUT, Alternator support	1
10	LW-31H0.75	BOLT, 5/16-18 x 3/4 long, hex. hd., dr.	1
11	STD-690	WASHER, 13/16 O.D. x 25/64 I.D. x 1/16 thick	1
12	AN6-14	BOLT, 3/8-24 x 1-37/64 long, hex. hd., drilled end	1
13	STD-690	WASHER, 13/16 O.D. x 25/64 I.D. x 1/16 thick	AR
14	STD-872	NUT, 3/8-24 slotted	1
15	STD-713	PIN, Cotter, 3/32 dia. x 3/4 long	1
16	AN6-16	BOLT, 3/8-24 x 1-53/64 long, hex. hd., drilled end	1
17	76534	SHIM, 1-1/8 O.D. x 13/32 I.D. x .005 thick	AR
18	STD-690	WASHER, 13/16 O.D. x 25/64 I.D. x 1/16 thick	AR
19	STD-872	NUT, 3/8-24 slotted	1
20	STD-713	PIN, Cotter, 3/32 dia. x 3/4 long	1

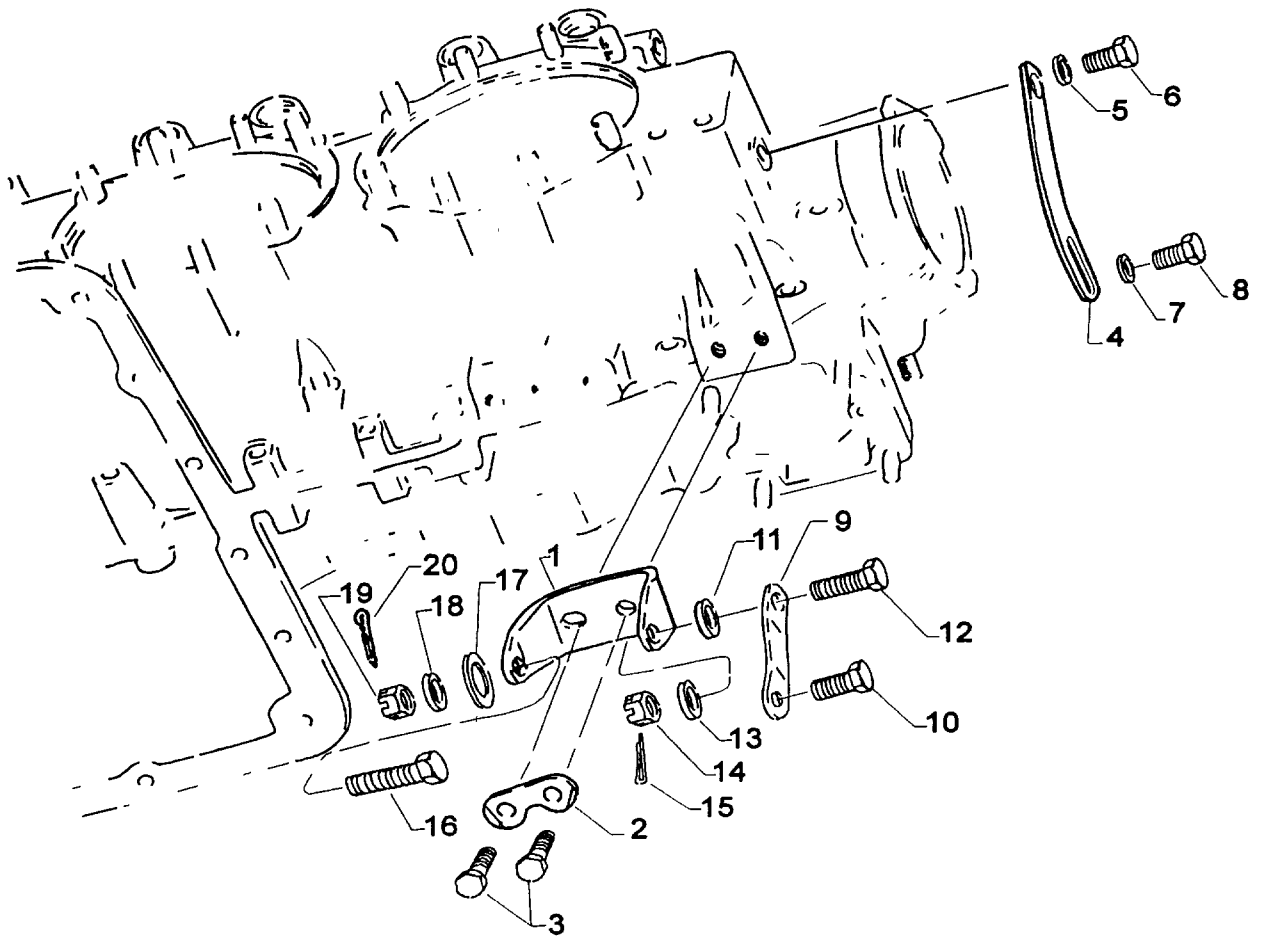


Figure 22. ALTERNATOR MOUNTING AND ATTACHING PARTS

SECTION

6

**OIL SUMP AND
INDUCTION SYSTEM**

**OIL SUMP AND INDUCTION SYSTEM
OIL SUMP ASSEMBLY AND OIL SUCTION SCREEN**

FIG. REF. 23	PART NUMBER	DESCRIPTION	QTY. PER ASSY.
1	LW-13353	GASKET, Oil sump	1
2	78915	SUMP ASSEMBLY, Oil	1
3	78914	CONNECTION, Intake pipe	4
4	61400	STUD, 1/4-20 x 1-3/16 long	4
5	31C-15	STUD, 5/16-18 x 1-7/8 long	4
6	STD-91	PLUG, 1/2-14 NPT, Allen head	1
7	STD-551	PLUG, 1/2-14 NPT, Sq. hd., drilled	2
8	STD-8	WASHER, 1/4 plain	28
9	STD-160	WASHER, 1/4 lock, internal teeth	20
10	LW-25-0.94	BOLT, 1/4-20 x 15/16 long, hex. hd.	14
11	LW-25-1.13	BOLT, 1/4-20 x 1-1/8 long, hex. hd.	2
12	STD-1411	NUT, 1/4-20 plain	12
13	STD-2229	PLUG, 1/2-14 NPT, Allen head	2
14	70484	SCREEN, Oil suction	1
15	06E19769-1.00	GASKET, 1.00 I.D. x 1-1/4 O.D. x 3/32 annular	1
16	LW-12545	PLUG, 5/8 hex. hd. x 1.00-20 thread	1

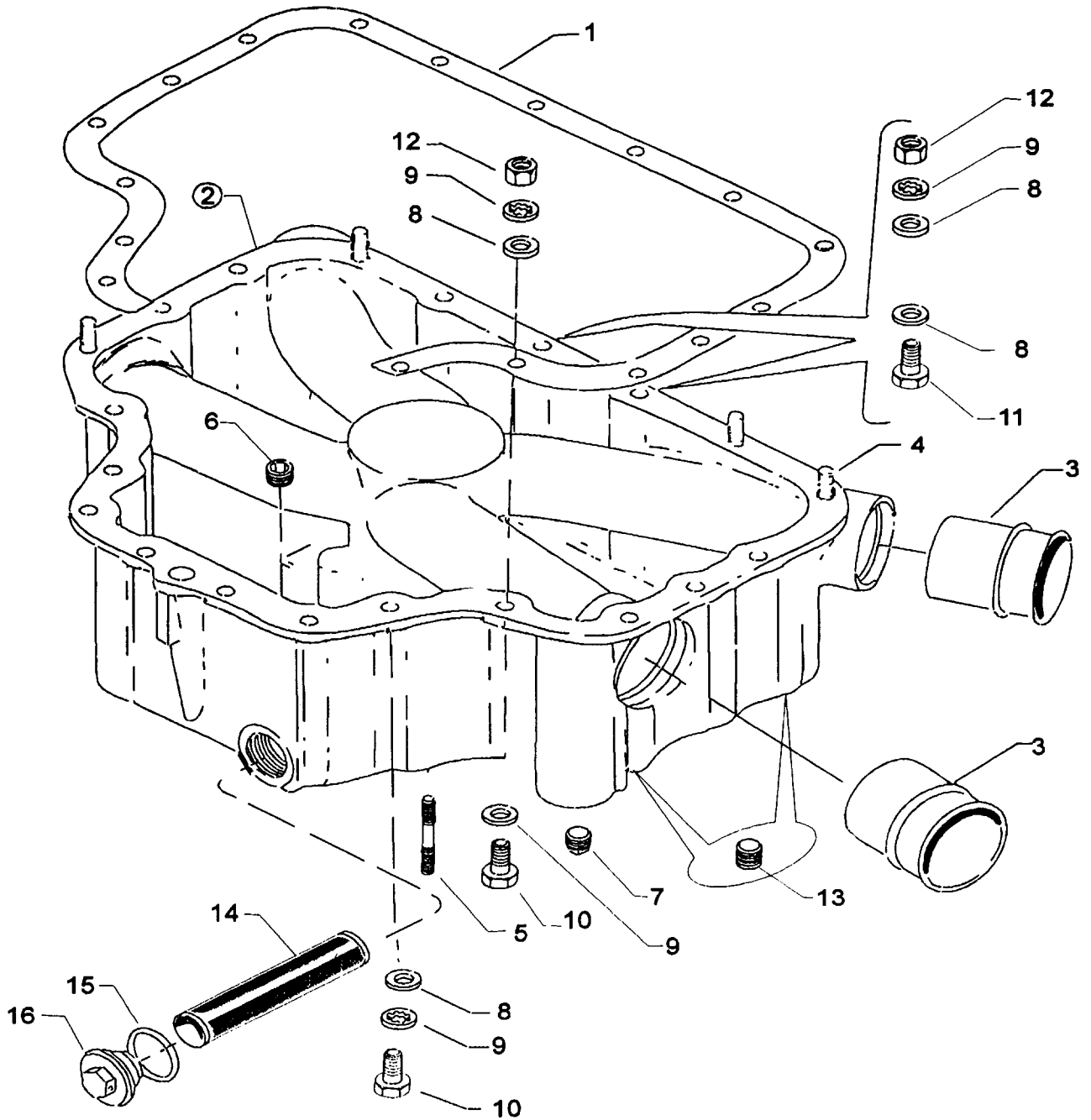


Figure 23. OIL SUMP ASSEMBLY AND OIL SUCTION SCREEN

**OIL SUMP AND INDUCTION SYSTEM
INTAKE PIPES AND ATTACHING PARTS**

FIG. REF. 24	PART NUMBER	DESCRIPTION	QTY. PER ASSY.
1	70485	PIPE, Intake	4
2	69603	HOSE, 1-3/4 I.D. x 2-3/16 O.D. x 1-3/4 long	4
3	LW-15592-8-28	CLAMP, Hose	8
4	71973	GASKET, 2 bolt flange, 1-7/8 I.D.	4
5	73346	FLANGE, Intake pipe, upper	4
6	STD-8	WASHER, 1/4 plain	8
7	STD-160	WASHER, 1/4 lock, internal teeth	8
8	LW-25-1.25	BOLT, 1/4-20 x 1-1/4 long, hex. hd.	8

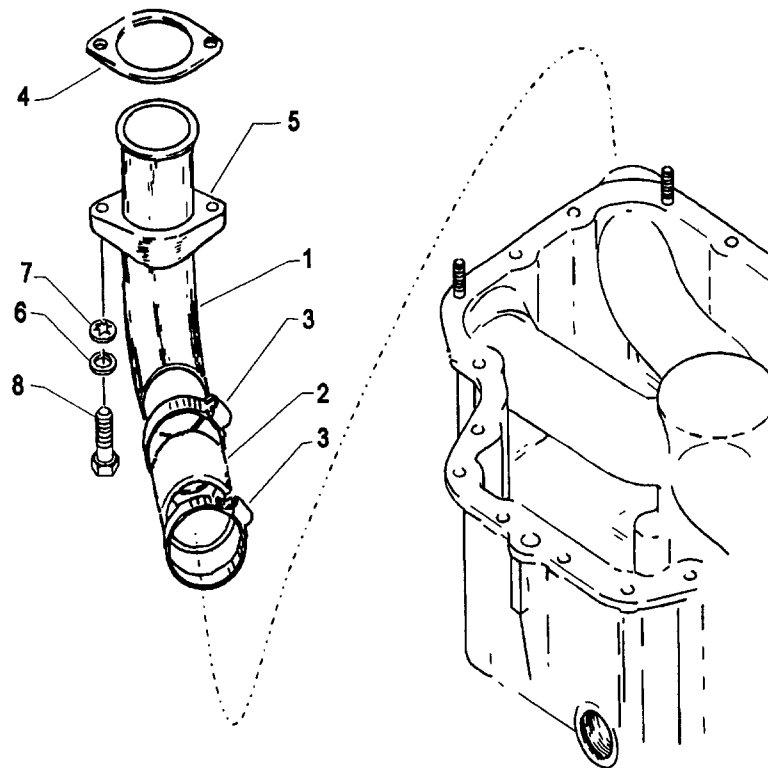


Figure 24. INTAKE PIPES AND ATTACHING PARTS

**OIL SUMP AND INDUCTION SYSTEM
CARBURETOR ASSEMBLY**

FIG. REF. 25	PART NUMBER	DESCRIPTION	QTY. PER ASSY.
1	66224	GASKET, Carburetor	1
2	71098	CARBURETOR, (10-3878) (Model MA-4-5)	1
3	STD-35	WASHER, 5/16 plain	4
4	STD-1410	NUT, 5/16-18 plain	4
5	STD-475	WASHER, 5/16 lock, internal teeth	4

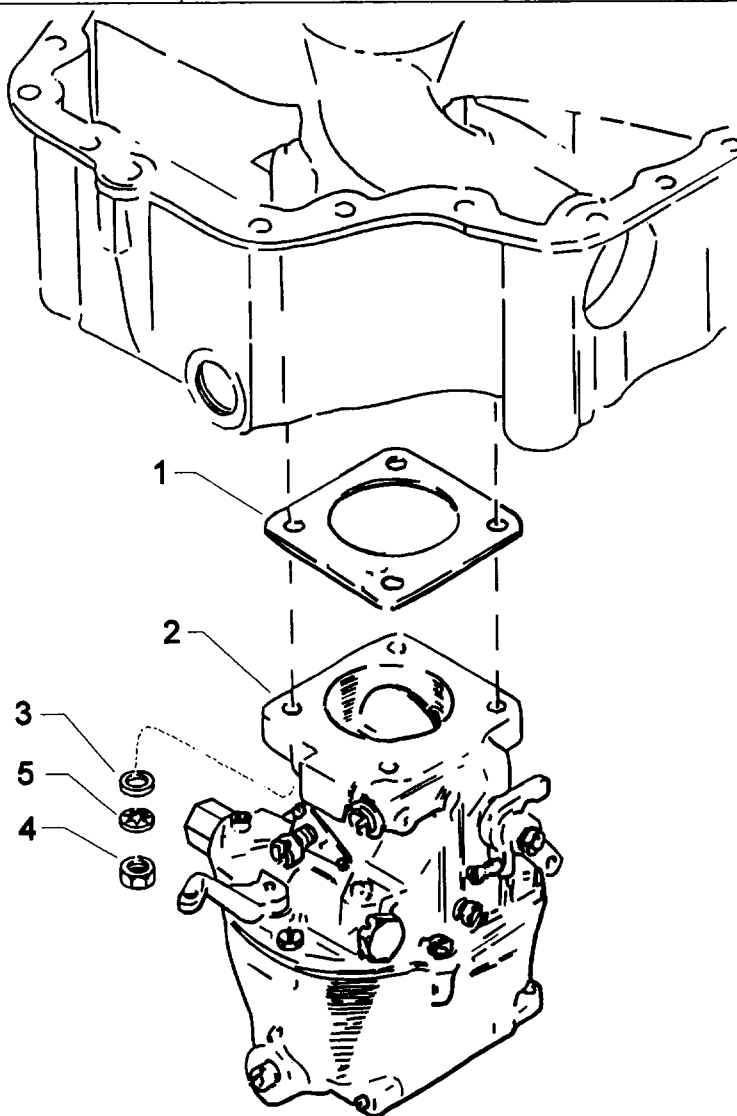


Figure 25. CARBURETOR ASSEMBLY

**OIL SUMP AND INDUCTION SYSTEM
PRIMING SYSTEM**

FIG. REF. 26	PART NUMBER	DESCRIPTION	QTY. PER ASSY.
1	LW-12098-0-280	TUBE ASSY., Primer, cyl. no. 1	1
2	LW-12098-0-170	TUBE ASSY., Primer, cyl. no. 2	1
3	LW-12098-0-120	TUBE ASSY., Primer, cyl. no. 4	1
4	LW-12098-0-100	TUBE ASSY., Primer, intermediate	1
5	LW-12598	SLEEVE, Priming line	3
6	1102	PLUG, 1/8 NPT, Allen (assemble in cylinder head)	1
7	LW-16266-25-13	CLAMP	4
8	LW-18959-175-25	CLAMP, 1-3/4 I.D. with 1/4 dia. offset	3
9	STD-553	SCREW, No. 6-32 x 1/2 long, rd. hd.	3
10	AN365-632A	NUT, No. 6-32 self-locking	3
11	STD-853	TEE, Union, 1/8 tube	2
12	63D21408	NIPPLE ASSY., Primer	3

SECTION

7

**SERVICE KIT
SECTION**

SERVICE KIT SECTION SEAL AND GASKET KIT

Part No.	Part Name	Qty.
75439-1	SEAL AND GASKET SET	1
LW-10332	LOCKPLATE, Crankshaft gear	1
LW-12272	LOCKPLATE, Shroud tube	4
LW-12681	GASKET, Magneto	2
LW-12795	GASKET, Oil filter adapter	1
LW-13353	GASKET, Oil sump	1
LW-13792*	SEAL, Crankshaft oil	1
LW-14260	SEAL, Tachometer drive	1
LW-14995	SPRING, Shroud tube	4
LW-18639	LOCKPLATE, Crankshaft gear	1
LW-18661	SEAL, Shroud tube	8
LW-19296	GASKET, Exhaust flange	4
STD-213	SEAL, Oil	1
06A19956	SEAL, Oil	1
06E19769-0.63	GASKET	2
06E19769-1.00	GASKET	1
06E19769-1.25	GASKET	1
1691-C	GASKET, Fuel pump	1
60096	GASKET, Fuel pump	1
61173	GASKET, Oil pressure housing	1
61183	GASKET, Accessory adapter	1
62224	GASKET, Magneto adapter	3
66224	GASKET, Carburetor	2
68315	GASKET, Accessory drive	1
69164	GASKET, Fuel pump adapter	1
69345	SPACER	4
69551	GASKET, Accessory drive	1
70310	SEAL, Shroud tube	8
70455	GASKET	1
71481	RING, Oil seal	4
71973	GASKET	4
72053	GASKET, Governor	2
72059	GASKET, Oil level gage	1
72075	SEAL, Oil	6
72078	LOCKPLATE	2
72091	RING, Oil seal	2
72220	GASKET, Oil level gage	1
72312	RING, Oil seal	1
72829	LOCKPLATE	1
73189	GASKET	1
73383	LOCKPLATE	2
73817	LOCKPLATE	2
73818	GASKET, Accessory housing	1
74065	RING, Oil level gage seal	1
74068	RING, Oil level gage plug	1
75906	GASKET, Rocker box cover	4

SERVICE KIT SECTION SEAL AND GASKET SET

Part No.	Part Name	Qty.
75439-1	SEAL AND GASKET SET (CONT.)	1
76510	GASKET, Oil cooler bypass	1
76940*	SEAL, Crankshaft oil	1
77154	GASKET, Carburetor	1
77611	GASKET, Exhaust flange	4
8313	GASKET, Vacuum pump	1

* Refer to latest edition of Service Instruction No. 1324 for application.

SERVICE KIT SECTION CYLINDER, PISTON AND RING ASSEMBLY KIT

Part No.	Part Name	Qty.
05K21104	KIT - CYLINDER, PISTON AND RING ASSY.	1
LW-12427	CYLINDER AND HEAD ASSY.	1
LW-19001	VALVE, Exhaust	1
73938	VALVE, Intake	1
LW-11800	SPRING, Valve, outer	2
LW-11795	SPRING, Valve, inner	2
LW-10077	SEAT, Valve spring, upper, intake	1
LW-16475	SEAT, Valve spring, upper, exhaust	1
65441	SEAT, Valve spring, lower, intake	1
LW-13323	SEAT, Valve spring, lower, exhaust	1
60009	KEY, Valve, intake	2
17C21191	KEY, Valve, exhaust	2
17C19386	CAP, Valve stem, exhaust	1
75089	PISTON	1
74241	RING, Piston, compression	2
73857	RING, Piston, oil regulating	1
LW-14077	PIN, Piston	1
LW-11775	PLUG, Piston pin	2
60828	PLUG, Piston pin	2
71481	RING, Oil seal	1
LW-18661	SEAL, Shroud tube	2
70310	SEAL, Shroud tube	2
75906	GASKET, Rocker box cover	1

SERVICE KIT SECTION CRANKCASE ASSY. AND THRU STUD KIT

Part No.	Part Name	Qty.
LW-18399-1-S	CRANKCASE ASSY. AND THRU STUD KIT	1
LW-18399-1	CRANKCASE ASSY.	1
76220	THRU STUD	4
31C-14	STUD, AN Governor	4
74887	SPACER	2
AN565B1032H4	SET SCREW	1
AN565B1032H5	SET SCREW	1
STD-2090	NUT	2
SSP-582	TAG, Thin wall bearings	1
SSP-1576	TAG, Governor drive idler shaft	1
SSP-1769	TAG, Governor drive pad studs	1

SECTION

8

NUMERICAL INDEX

NUMERICAL INDEX

PART NO.	PART NAME	PAGE NO.	PART NO.	PART NAME	PAGE NO.
AN365-632A	Nut	6-5	LW-13353	Gasket	6-1
AN565B1032H5	Set Screw	1-9	LW-13521	Bearing	3-1
AN6-14	Bolt	5-3	LW-13790	Shaft	3-3
AN6-16	Bolt	5-3	LW-13792	Seal	1-5
AN6-34A	Bolt	1-13	LW-13793	Stud	1-1
AN960-616L	Washer	1-13	LW-13796	Shaft	1-11
LW-25-0.94	Bolt	2-3	LW-13884	Bearing	1-5
LW-25-0.94	Bolt	6-1	LW-13896	Plug	1-9
LW-25-1.13	Bolt	1-13	LW-13923	Bushing	3-1
LW-25-1.13	Bolt	2-3	LW-14021	Shaft	1-9
LW-25-1.13	Bolt	6-1	LW-14077	Pin	3-1
LW-25-1.25	Bolt	6-3	LW-14260	Seal	2-3
LW-25-1.50	Bolt	1-13	LW-14371	Alternator Assy.	5-1
LW-25-1.50	Bolt	2-3	LW-14758	Gage Assy.	1-3
LW-25S1.50	Bolt	1-13	LW-14995	Spring	3-5
LW-25-1.75	Bolt	1-13	LW-15571	Starter	5-2
LW-31H0.75	Bolt	5-3	LW-15592-5-05	Hose	3-7
LW-31-0.94	Bolt	5-3	LW-15592-8-28	Clamp	6-3
LW-31-1.16	Bolt	5-2	LW-16266-25-13	Clamp	6-5
LW-38-.75	Bolt	2-5	LW-16471	Support Assy.	1-7
LW-10077	Seat	3-5	LW-16475	Seat	3-5
LW-11485	Tube	3-5	LW-16711	Bearing	1-5
LW-11713	Spring	1-5	LW-18085	Spring	1-5
LW-11750	Conn. Rod Assy.	3-1	LW-18399-1	Crankcase Assy.	1-1
LW-11775	Plug	3-1	LW-18639	Lockplate	1-7
LW-11795	Spring	3-5	LW-18661	Seal	3-5
LW-11800	Spring	3-5	LW-18667	Pin	1-4
LW-12098-0-100	Tube Assy.	6-5	LW-18843	Camshaft Assy.	1-4
LW-12098-0-120	Tube Assy.	6-5	LW-18959-175-25	Clamp	6-5
LW-12098-0-170	Tube Assy.	6-5	LW-19001	Valve	3-5
LW-12098-0-280	Tube Assy.	6-5	MS20823-6D	Elbow	3-2
LW-12186	Nut	3-1	STD-8	Washer	1-13
LW-12272	Lockplate	3-5	STD-8	Washer	2-3
LW-12427	Cyl. & Head Assy.	3-2	STD-8	Washer	2-7
LW-12545	Plug	6-1	STD-8	Washer	2-8
LW-12598	Sleeve	6-5	STD-8	Washer	6-1
LW-12681	Gasket	4-1	STD-8	Washer	6-3
LW-12706	Adapter	4-1	STD-19	Dowel	1-9
LW-12892	Thrust Button	3-3	STD-33	Washer	1-13
LW-13323	Seat	3-5	STD-33	Washer	2-5

NUMERICAL INDEX (Continued)

PART NO.	PART NAME	PAGE NO.	PART NO.	PART NAME	PAGE NO.
STD-35	Washer	1-9	STD-1410	Nut	1-9
STD-35	Washer	2-3	STD-1410	Nut	2-5
STD-35	Washer	2-5	STD-1410	Nut	3-3
STD-35	Washer	3-3	STD-1410	Nut	4-1
STD-35	Washer	5-2	STD-1410	Nut	5-2
STD-35	Washer	5-3	STD-1410	Nut	6-4
STD-35	Washer	6-4	STD-1411	Nut	1-13
STD-91	Plug	6-1	STD-1411	Nut	2-7
STD-160	Washer	1-13	STD-1411	Nut	3-5
STD-160	Washer	2-3	STD-1411	Nut	6-1
STD-160	Washer	2-7	STD-1420	Nut	2-3
STD-160	Washer	6-1	STD-1623	Insert	1-1
STD-160	Washer	6-3	STD-1727	Washer	5-3
STD-475	Washer	1-9	STD-1774	Pin	2-7
STD-475	Washer	2-5	STD-1821	Hose	3-7
STD-475	Washer	3-3	STD-1856	Screw	2-8
STD-475	Washer	4-1	STD-1872	Insert	3-2
STD-475	Washer	5-2	STD-1925	Screw	3-3
STD-475	Washer	6-4	STD-2090	Nut	3-3
STD-514	Dowel	1-1	STD-2167	Screw	1-11
STD-551	Plug	6-1	STD-2168	Nut	1-11
STD-553	Screw	6-5	STD-2213	Screw	1-7
STD-557	Dowel	1-1	STD-2229	Plug	6-1
STD-596	Nut	1-13	STD-2231	Ring	1-4
STD-678	Washer	1-13	25C-8	Stud	3-2
STD-678	Washer	2-5	25C-22	Stud	2-1
STD-684	Nipple	3-7	31C-12	Stud	1-1
STD-690	Washer	5-3	31C-12	Stud	2-1
STD-713	Pin	5-3	31C-12	Stud	3-2
STD-784	Plug	2-1	31C-13	Stud	1-1
STD-784	Plug	2-8	31C-15	Stud	6-1
STD-798	Dowel	1-9	31C-17	Stud	1-1
STD-853	Tee	6-5	31C-19	Stud	2-1
STD-872	Nut	1-13	31CD-17	Stud	2-1
STD-872	Nut	5-3	38-13	Stud	1-1
STD-1065	Dowel	1-7	38-22	Stud	1-1
STD-1211	Plug	1-7	38D-17	Stud	1-1
STD-1339	Plug	1-1	50-15	Stud	1-1
STD-1353	Insert	3-2	383-B	Nut	3-3
STD-1409	Nut	1-13	1028-B	Ball	1-5

NUMERICAL INDEX (Continued)

PART NO.	PART NAME	PAGE NO.	PART NO.	PART NAME	PAGE NO.
1102	Plug	1-1	70484	Screen	6-1
1102	Plug	2-1	70485	Pipe	6-3
1102	Plug	3-2	71098	Carburetor	6-4
1102	Plug	6-5	71140	Fitting	2-8
1182-J3	Spark Plug	4-1	71481	Ring	3-3
8313	Gasket	2-7	71596	Washer	2-7
60009	Key	3-5	71610	Hook	3-7
60096	Gasket	2-5	71611	Retainer	3-7
60430	Cover	2-7	71973	Gasket	6-3
60803	Strap	1-13	72053	Gasket	1-9
61084	Spring	1-5	72057	Seat	3-2
61098	Adapter Assy.	2-7	72058	Seat	3-2
61173	Gasket	2-8	72059	Gasket	1-3
61174	Shaft	2-3	72075	Seal	1-5
61183	Gasket	2-7	72091	Ring	1-5
61247	Cover	3-3	72155-S	Bushing	1-7
61400	Stud	6-1	72158	Bushing	1-1
61510	Plug	1-7	72378	Cover	1-9
61665	Gear	4-1	72566	Gear	1-7
61681	Guide	3-2	72877	Body	1-5
62224	Gasket	4-1	72970	Gear Assy.	2-7
62817	Screen Assy.	2-8	73249	Washer	1-9
65007	Retainer	1-1	73250	Washer	1-9
65098	Cover	2-5	73251	Washer	1-9
65441	Seat	3-5	73252	Washer	1-9
66224	Gasket	6-4	73346	Flange	6-3
66610	Bushing	3-2	73383	Lockplate	5-3
66796	Insert	3-2	73434	Rod Assy.	3-3
68668	Spring	1-5	73437	Rod Assy.	3-3
68759	Tube Assy.	3-7	73818	Gasket	2-1
68760	Tube Assy.	3-7	73857	Ring	3-1
68761	Tube Assy.	3-7	73938	Valve	3-5
69106	Cover	2-5	74068	Ring	1-3
69510	Housing	2-8	74230	Guide	3-2
69551	Gasket	2-5	74241	Ring	3-1
69603	Hose	6-3	74323	Strut	5-3
69675	Connector	2-8	74637	Bushing	3-3
69796	Dowel	1-1	74887	Spacer	3-3
70310	Seal	3-5	74996	Gear Assy.	1-11
70455	Gasket	1-9	75061	Bolt	3-1

NUMERICAL INDEX (Continued)

PART NO.	PART NAME	PAGE NO.	PART NO.	PART NAME	PAGE NO.
75089	Piston	3-1	05K19423-S	Impeller Kit	2-3
75154	Stud	1-1	06A19956	Oil Seal	2-7
75339	Baffle Assy.	3-7	06E19769-0.63	Gasket	2-8
75380	Link	5-3	06E19769-1.00	Gasket	6-1
75656-S	Bushing	1-7	06E19769-1.25	Gasket	1-5
75736	Tube	1-3	07A19474	Bracket	5-3
75906	Gasket	3-3	13B27125	Cr'shft & Plug Assy.	1-7
76118	Spacer	1-4	13S19646	Gear	1-7
76121	Shaft Assy.	1-4	15B21319	Socket	3-5
76220	Stud	1-13	15F19957-35	Rod Assy.	3-3
76510	Gasket	2-8	15F19957-36	Rod Assy.	3-3
76534	Shim	5-3	17C19386	Cap	3-5
76734	Zip Strap	4-1	17C21191	Key	3-5
77309	Bushing	1-11	17F19357	Rocker Assy.	3-3
77467	Spring	1-5	18A19441	Bearing	1-5
77808	Valve Assy.	1-5	21A21533-04	Housing Assy.	2-1
77872	Bushing	1-9	36B19484	Pulley	5-1
77874	Gear Assy.	1-9	37A19773-376	Belt	5-1
77875	Gear	1-9	53E19600	Valve Assy.	2-8
78290	Plunger Assy.	3-5	63D21408	Nipple Assy.	6-5
78531	Body	2-3	66GC25SFNN	Magneto	4-1
78914	Connection	6-1	66GP-OSANN	Magneto	4-1
78915	Sump Assy.	6-1	66M21195	Clamp	4-1
79024-S	Bushing	1-7	67P20428	Harness Assy.	4-1
01L21418	Washer	1-9	67P20429	Harness Assy.	4-1
01P19762-1-1	Bag	4-1	68C19622	Gear	4-1